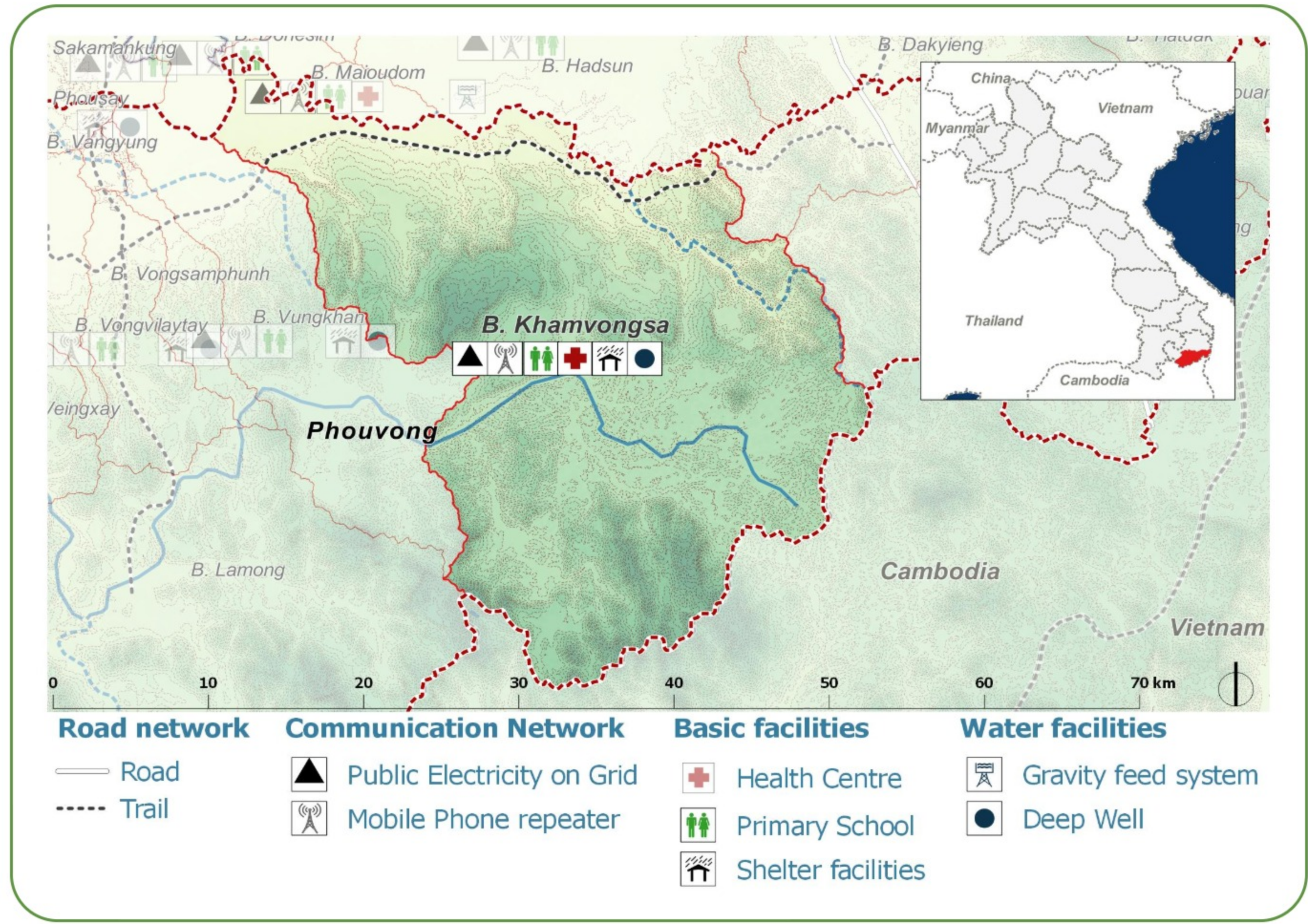
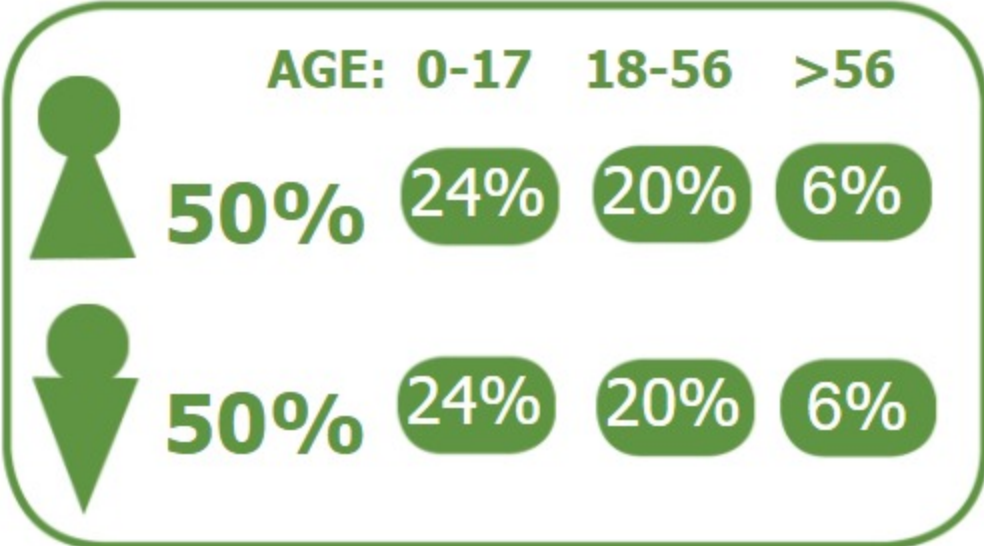


### DEMOGRAPHICS

Population (2017): **1373**  
 Main ethnic group: **Brao**  
 Other ethnic group: **Lao, Cheng**  
 Religion: **Animism**



### Ecosystem & Services:

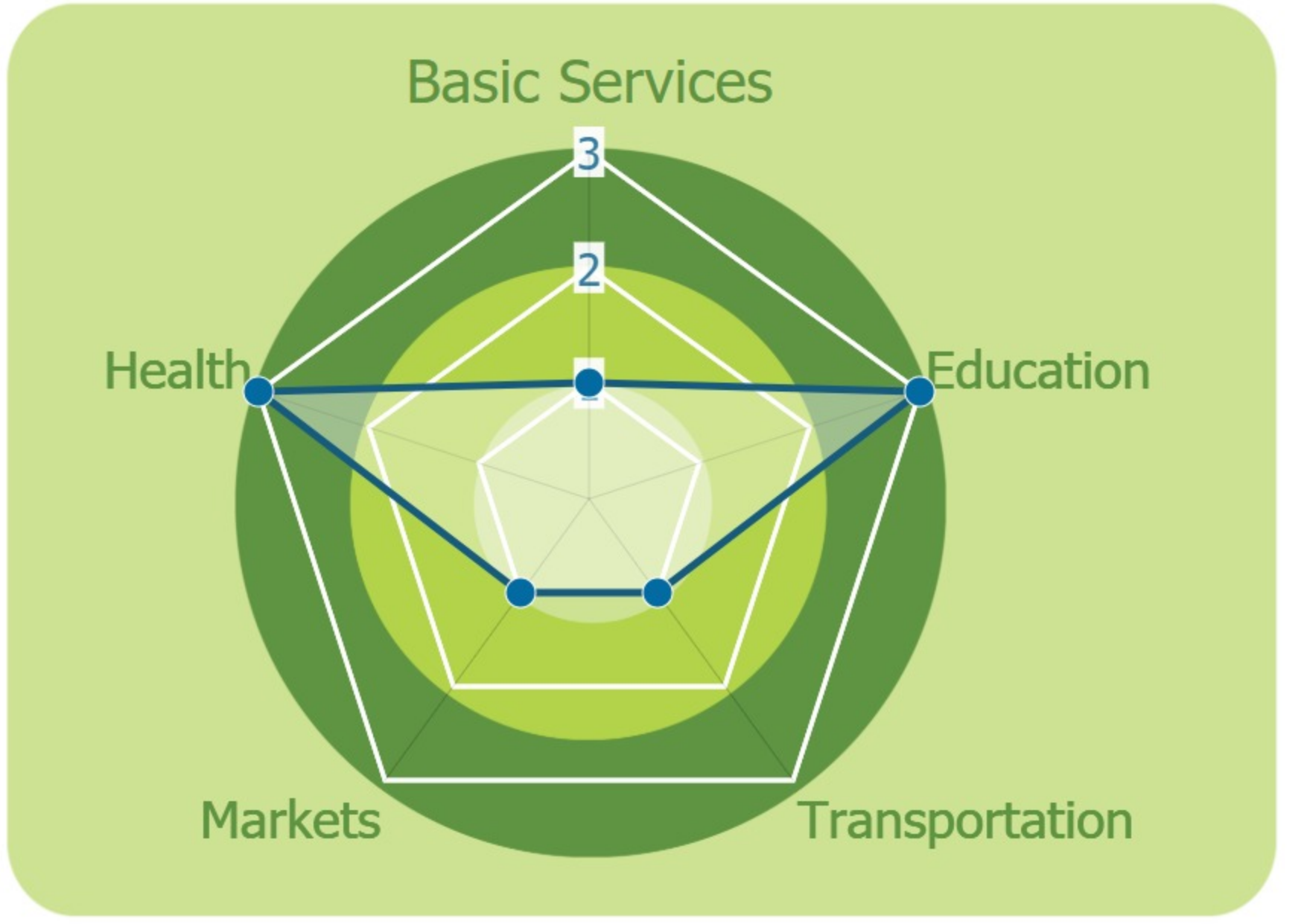
- Rice
- Maize
- Livestock
- Grains
- Grass
- Vegetables
- Wood
- Stream
- River

### Sources of Income:

- Agriculture
- Subsistence agriculture
- Livestock
- Manufacture
- Trade
- NTFP

### Education:

- Kindergarten
- Primary
- High school



### HEALTH

Water-bourne: **None**  
 Vector-bourne: **Dengue, Encephalitis**

### CLIMATE CHANGE & DISASTERS

Changes over the past 30 years

- 1 every 3-5 years** Houses, livelihoods, Health, Less severe
- 1 every 3-5 years** Water, Food, Crops, Less severe
- More than 1 per year** Homes, Income, Crops, More frequent

**DRY SEASON**      **WET SEASON**

Significant Increase      Some decrease  
 Significant decrease      Significant decrease

**IMPACTS:**  
 Health / Water / Agriculture / Livestock

**No Landslides**

### ENVIRONMENTAL ISSUES

**Deforestation impacts**

- + Industrial develop (+)
- + Charcoal production (+)
- + More agricultural land (+)
- More flooding (-)
- Loss of biodiversity (-)
- Erosion (-)
- Less food sources (-)

**Hydropower impacts**

No hydropower dam

**Mining impacts**

No mining activity

### VULNERABILITY INDEX

**Hazard Intensity: 1.77**  
**Sensitivity: 1.6**  
**Ranking: 2.83**

### PRIORITIES & NEEDS

1. Construct water facility (borehole)
2. Build latrine (Sanitation)