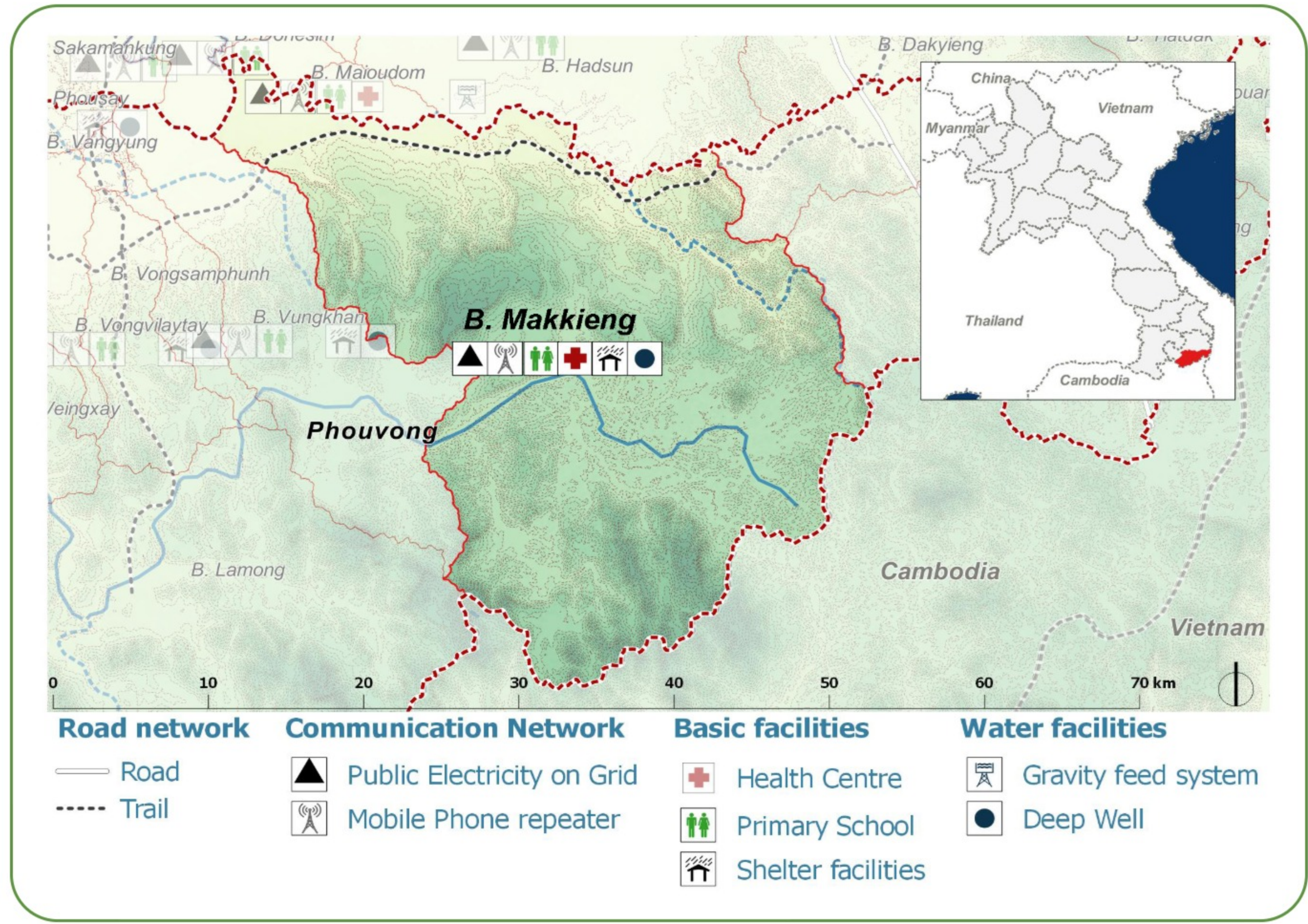
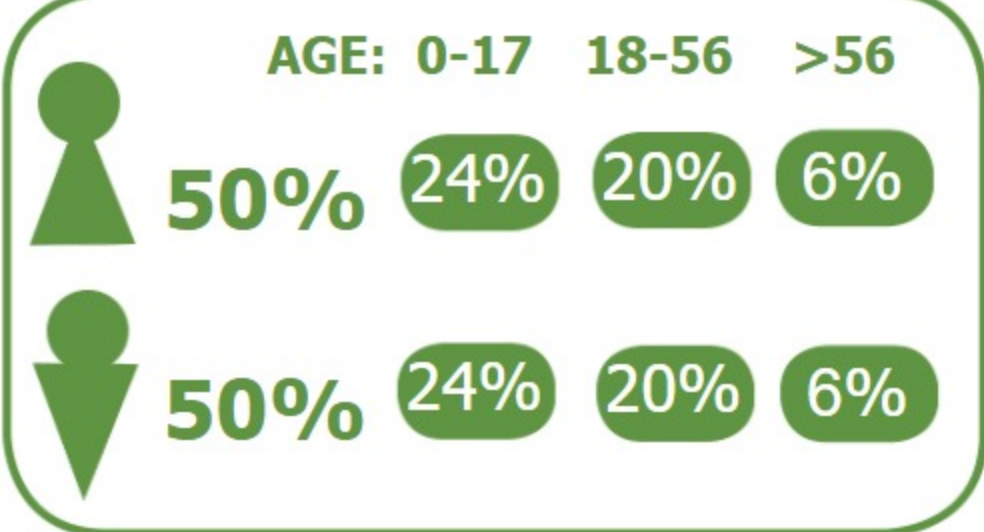


DEMOGRAPHICS

Population (2017):
594
Main ethnic group:
Brao
Other ethnic group:
Lao, Sapouan
Religion:
Buddhism, Animism



Ecosystem & Services:

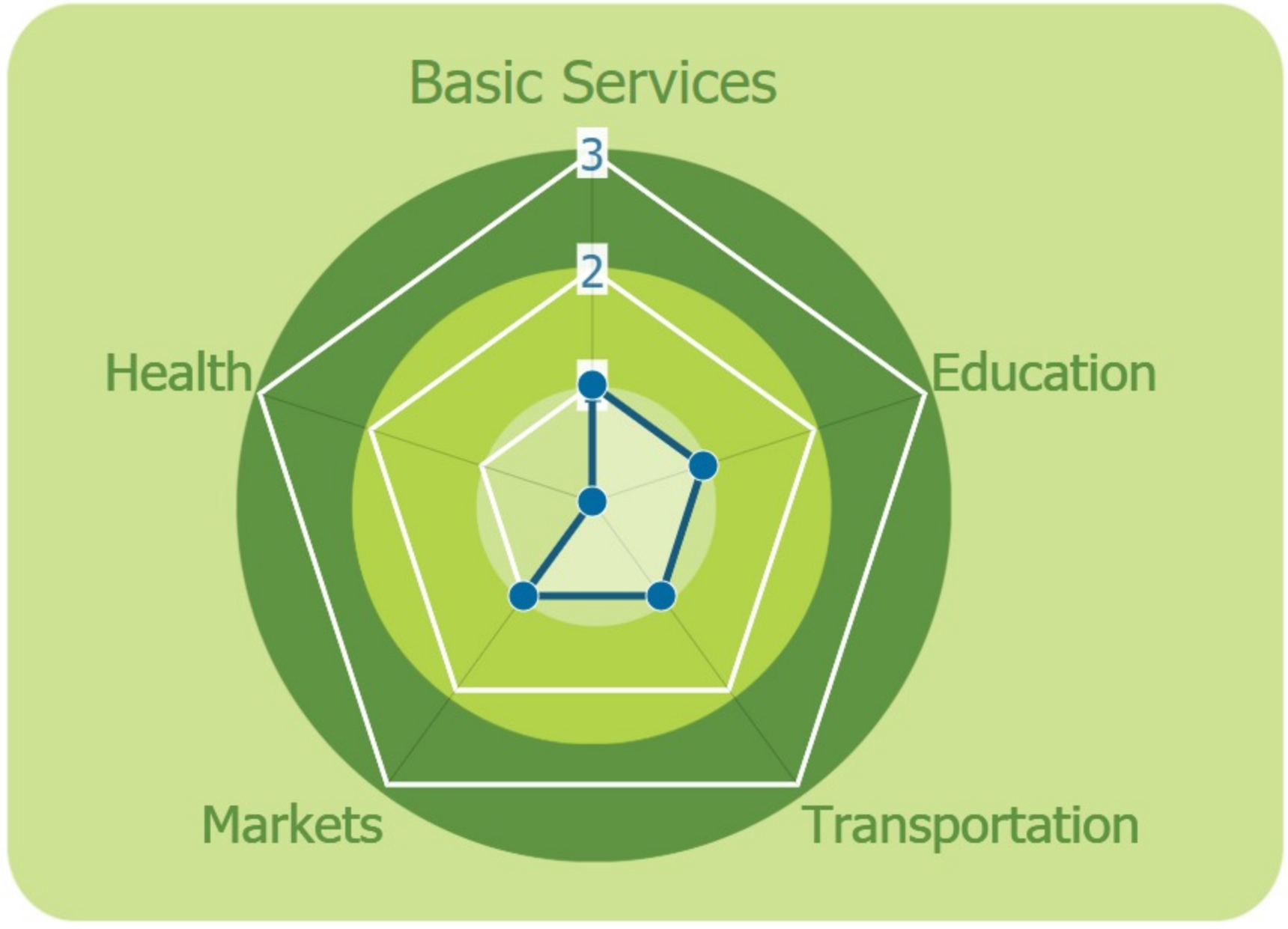
- Rice
- Livestock
- Grass
- Vegetables
- Wood
- Stream

Sources of Income:

- Subsistence agriculture
- Livestock
- Trade
- NTFP

Education:

- Primary



HEALTH

- Water-bourne:**
Allergies
Diarrhea
Eye
Skin
- Vector-bourne:**
Dengue
Encephalitis
Malaria

CLIMATE CHANGE & DISASTERS

Changes over the past 30 years



No Landslides

DRY SEASON **WET SEASON**

Significant Increase Significant decrease

Significant decrease Significant decrease

IMPACTS:
Health / Water / Agriculture / Livestock

ENVIRONMENTAL ISSUES

Deforestation impacts

- + Industrial develop (+)
- + Charcoal production (+)
- + More agricultural land (+)
- More flooding (-)
- Loss of biodiversity (-)
- Erosion (-)
- Less food sources (-)

Hydropower impacts

No hydropower dam

Mining impacts

No mining activity

VULNERABILITY INDEX

Hazard Intensity: 1.77

Sensitivity: 3.4

Ranking: 6.01

PRIORITIES & NEEDS

1. Construct pipe distribution system