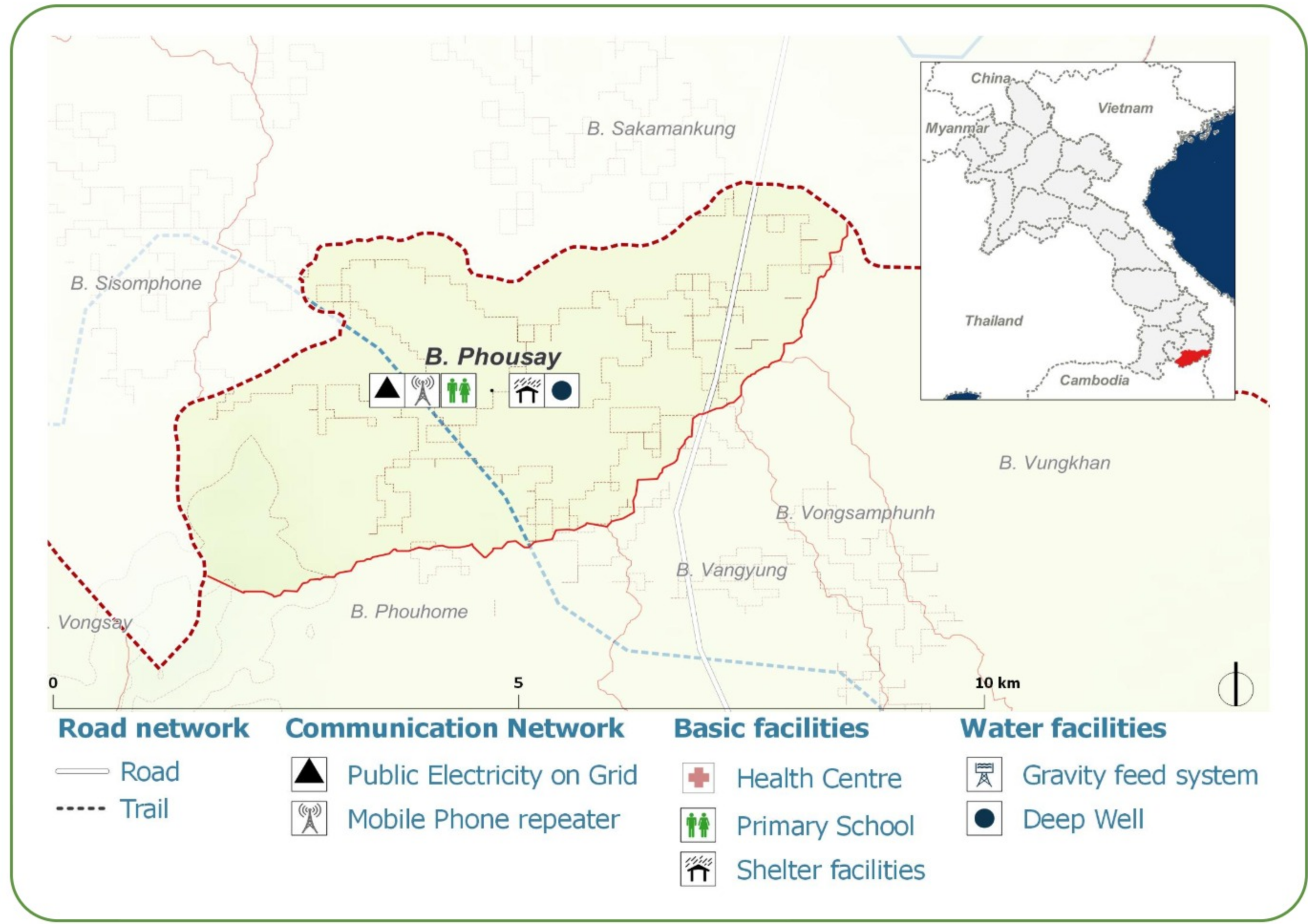
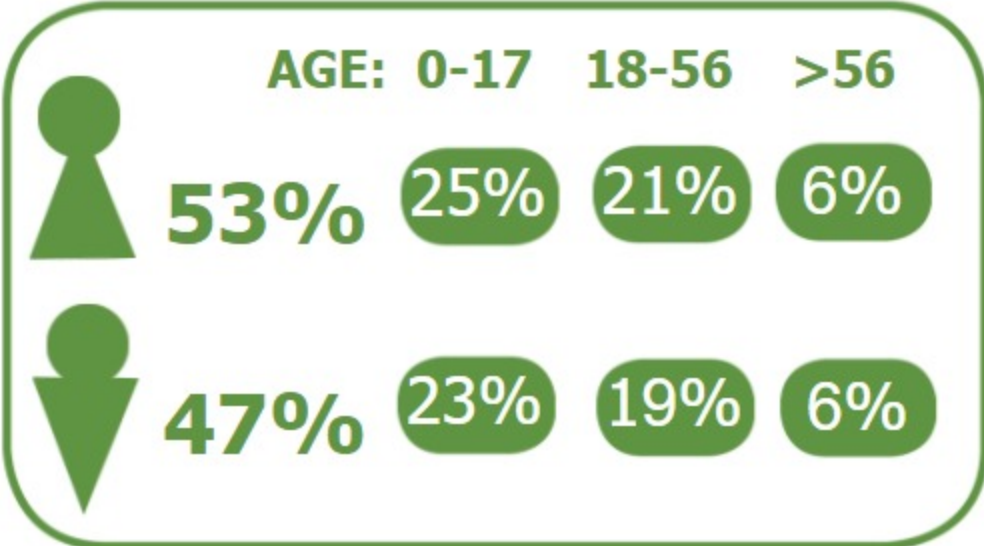


DEMOGRAPHICS

Population (2017): **309**
Main ethnic group: **Brao**
Other ethnic group: **Lao, Tariang**
Religion: **Buddhism, Animism**



Ecosystem & Services:

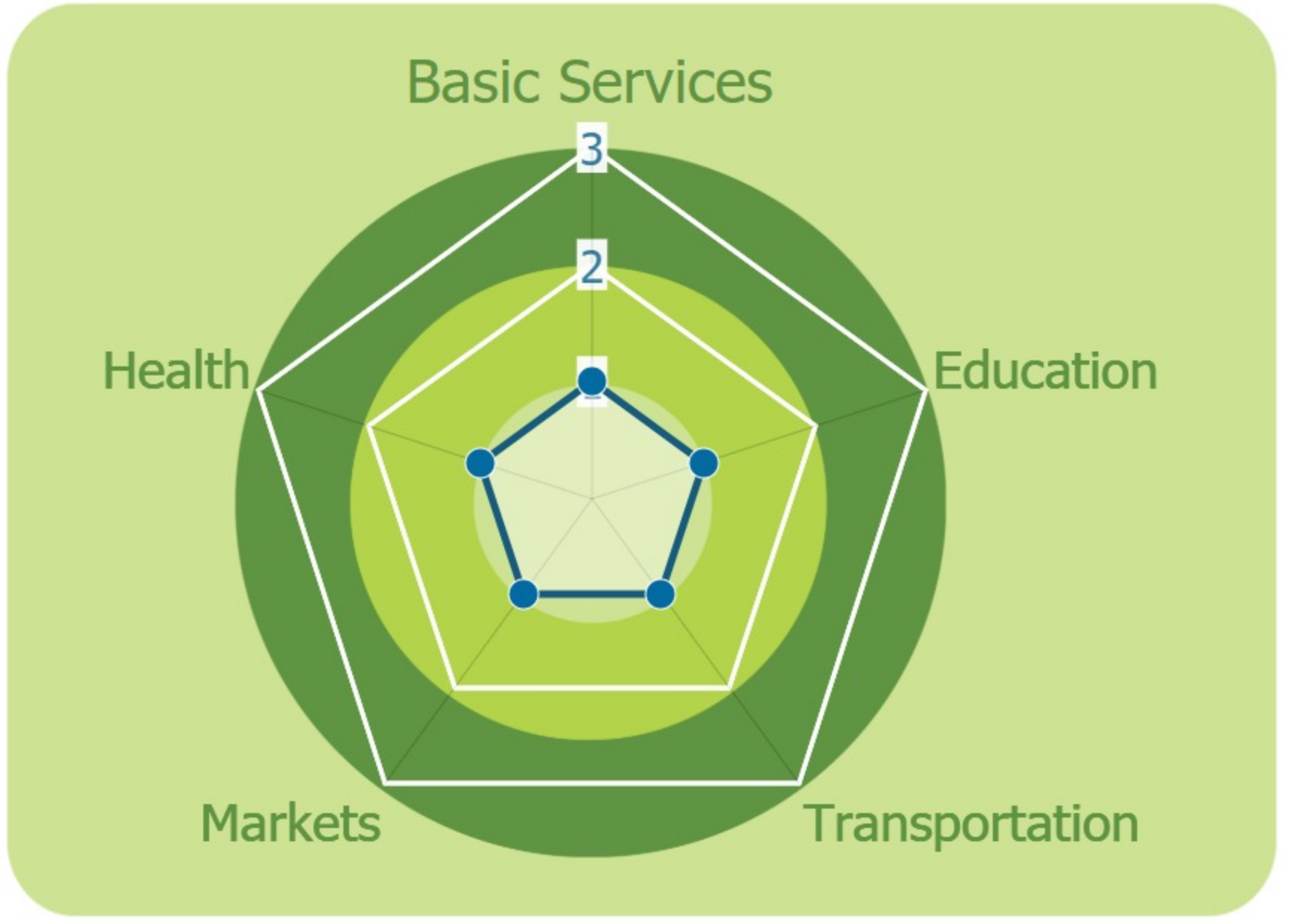
- Rice
- Maize
- Livestock
- Grass
- Vegetables
- Wood
- Stream
- Water spring

Sources of Income:

- Agriculture
- Subsistence agriculture
- Livestock

Education:

- Primary



HEALTH

Water-bourne:
Allergies
Diarrhea
Eye
Skin

Vector-bourne:
Dengue
Encephalitis
Malaria

CLIMATE CHANGE & DISASTERS
Changes over the past 30 years

- 1 every 3-5 years** livelihoods, Health, Less severe
- 1 every 3-5 years** Water, Food, Crops, Less severe
- More than 1 per year** Infrastructure, Income, More frequent

DRY SEASON **WET SEASON**

Significant Increase Significant decrease
Significant decrease Significant decrease

IMPACTS:
Health / Water / Agriculture / Livestock

No Landslides

ENVIRONMENTAL ISSUES

Deforestation impacts

- + Industrial develop (+)
- + More agricultural land (+)
- Loss of biodiversity (-)
- Erosion (-)
- Less food sources (-)

Hydropower impacts

No hydropower dam

Mining impacts

No mining activity

VULNERABILITY INDEX

Hazard Intensity: 1.77

Sensitivity: 3.1

Ranking: 5.48

PRIORITIES & NEEDS

1. Construct water facility (borehole)
2. Build latrine (Sanitation)