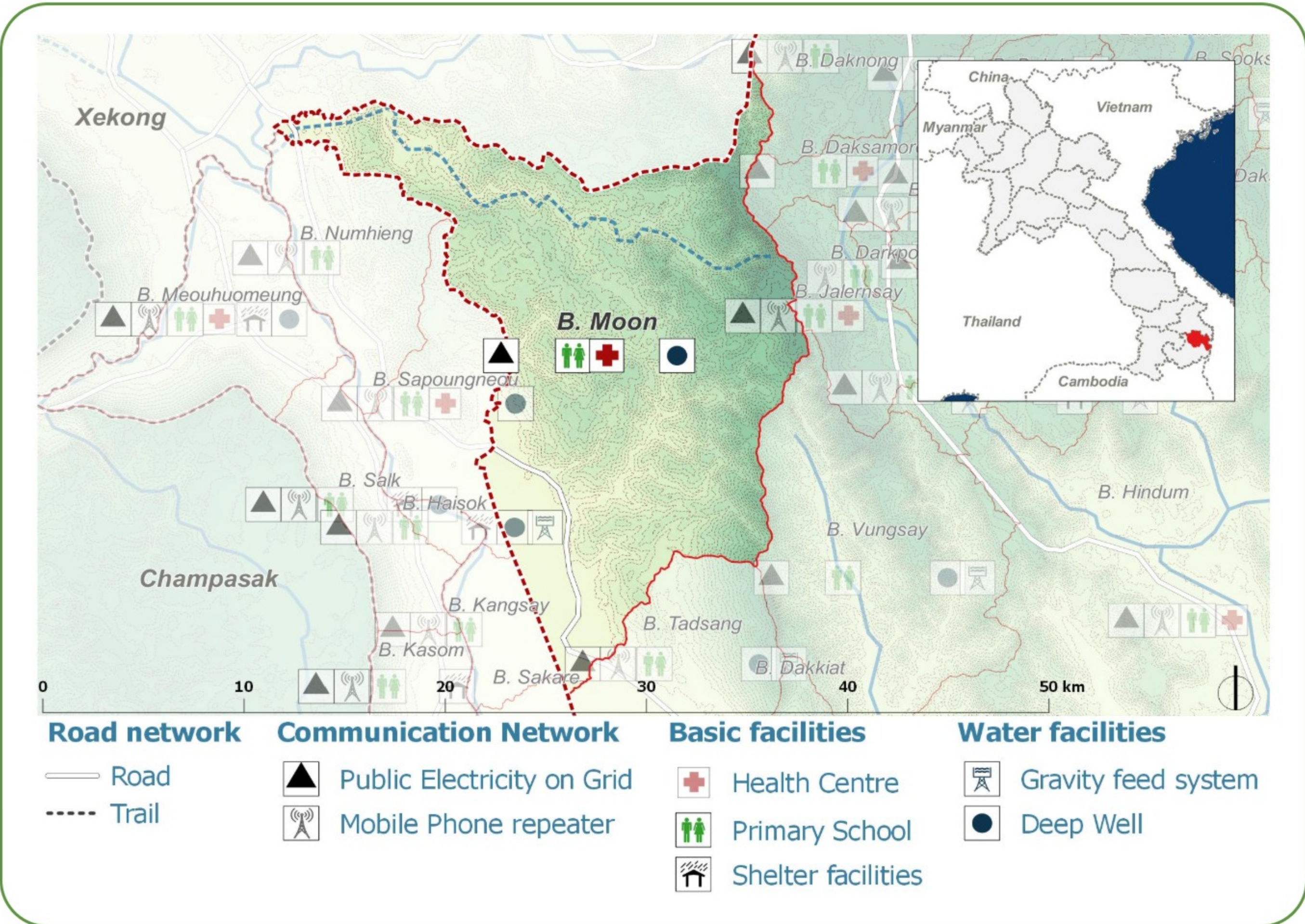
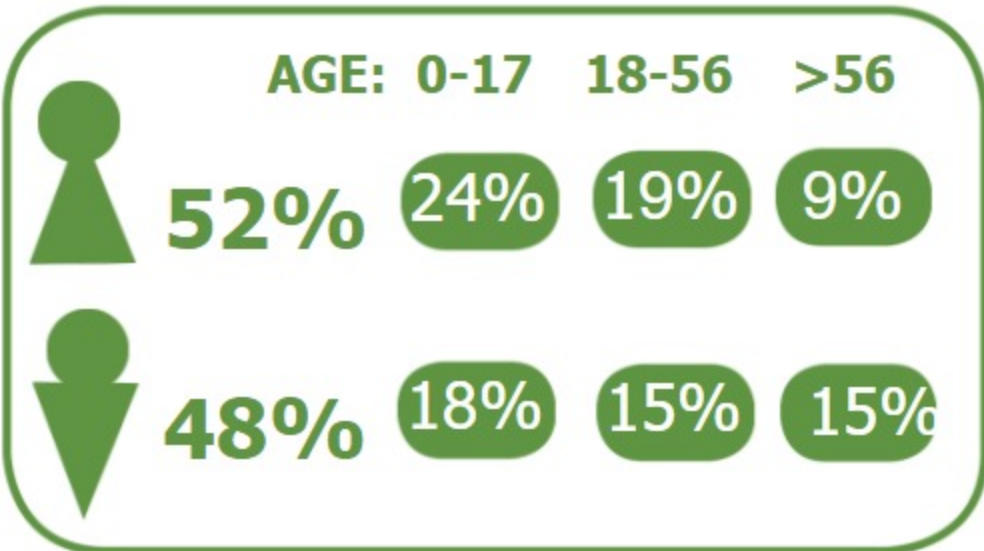


B. Moon (1704021)
Sanxay District, Attapeu

DEMOGRAPHICS

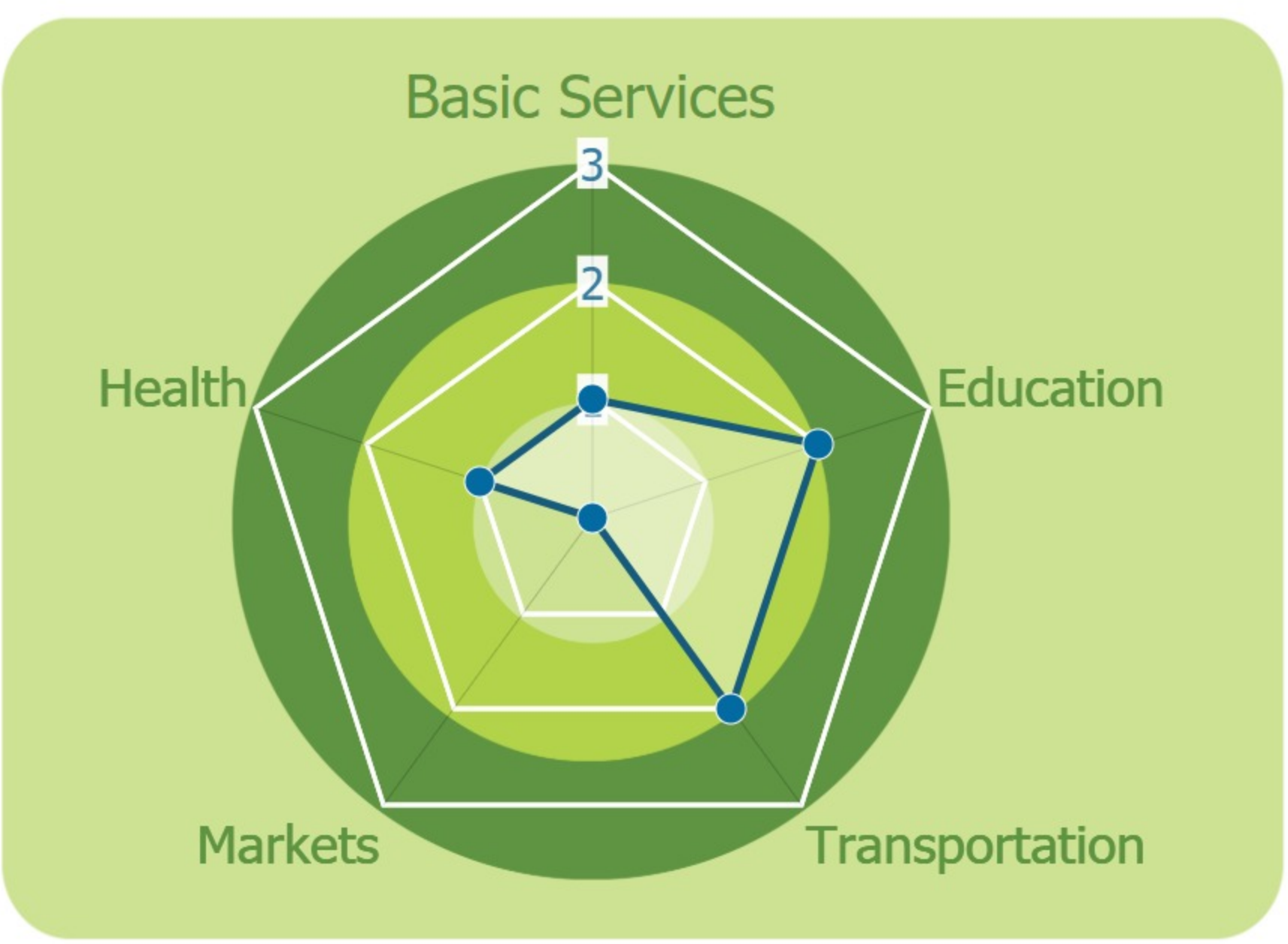
Population (2017): **1022**
Main ethnic group: **Alak**
Other ethnic group: **None**
Religion: **Animism**



Ecosystem & Services:
- None

Sources of Income:
- Subsistence agriculture

Education:
- Kindergarten
- Primary



HEALTH

Water-bourne: **Diarrhea**
Vector-bourne: **Encephalitis, Malaria**

CLIMATE CHANGE & DISASTERS

Changes over the past 30 years

No floods

1 every 3-5 years
Water Crops
Less severe

1 every 10 years
Homes
Infrastructure
Less frequent

No Landslides

DRY SEASON	WET SEASON
Some increase	Slight increase
Some increase	Slight increase

IMPACTS:
Health / Livestock

ENVIRONMENTAL ISSUES

Deforestation impacts

No positive impact
No negative impact

Hydropower impacts

No hydropower dam

Mining impacts

No mining activity

VULNERABILITY INDEX

Hazard Intensity: 1.03
Sensitivity: 3.3
Ranking: 3.41

PRIORITIES & NEEDS

1. Construct water facility (borehole)
2. Construct pipe distribution system
3. Build latrine (Sanitation)

