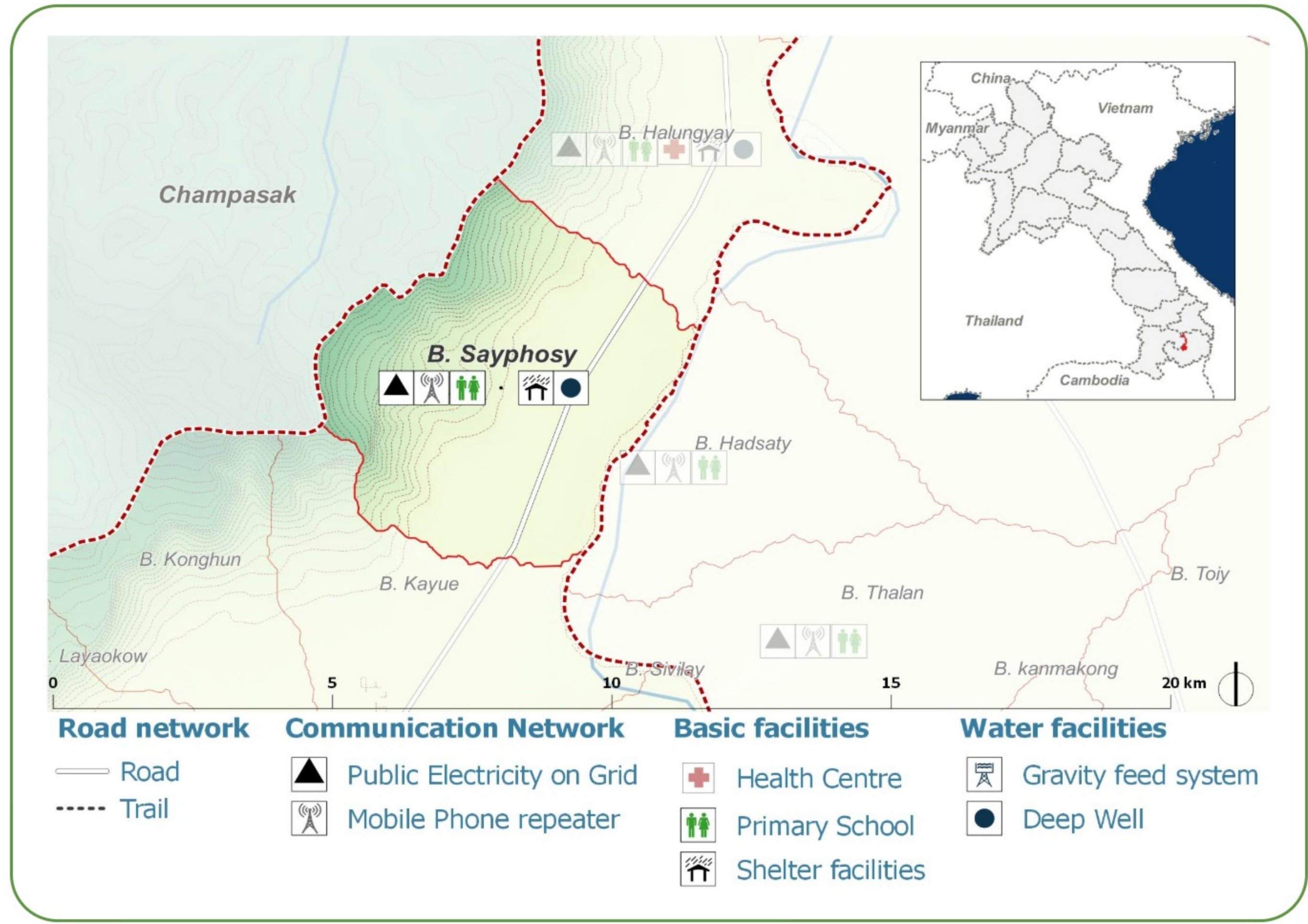
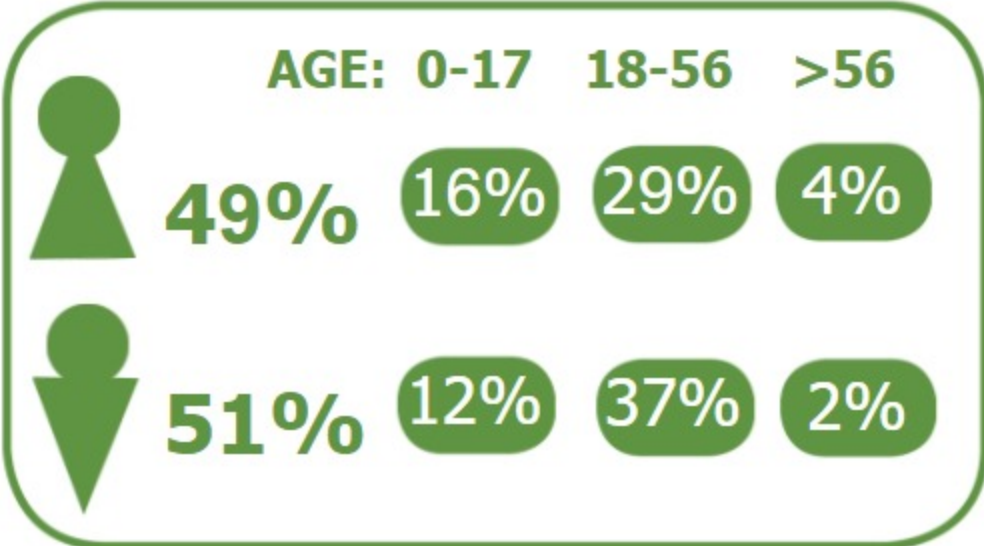


B. Sayphosy (1702035) Samakkhixay District, Attapeu

DEMOGRAPHICS

Population (2017): **669**
 Main ethnic group: **Lao**
 Other ethnic group: **None**
 Religion: **Buddhism**



Ecosystem & Services:

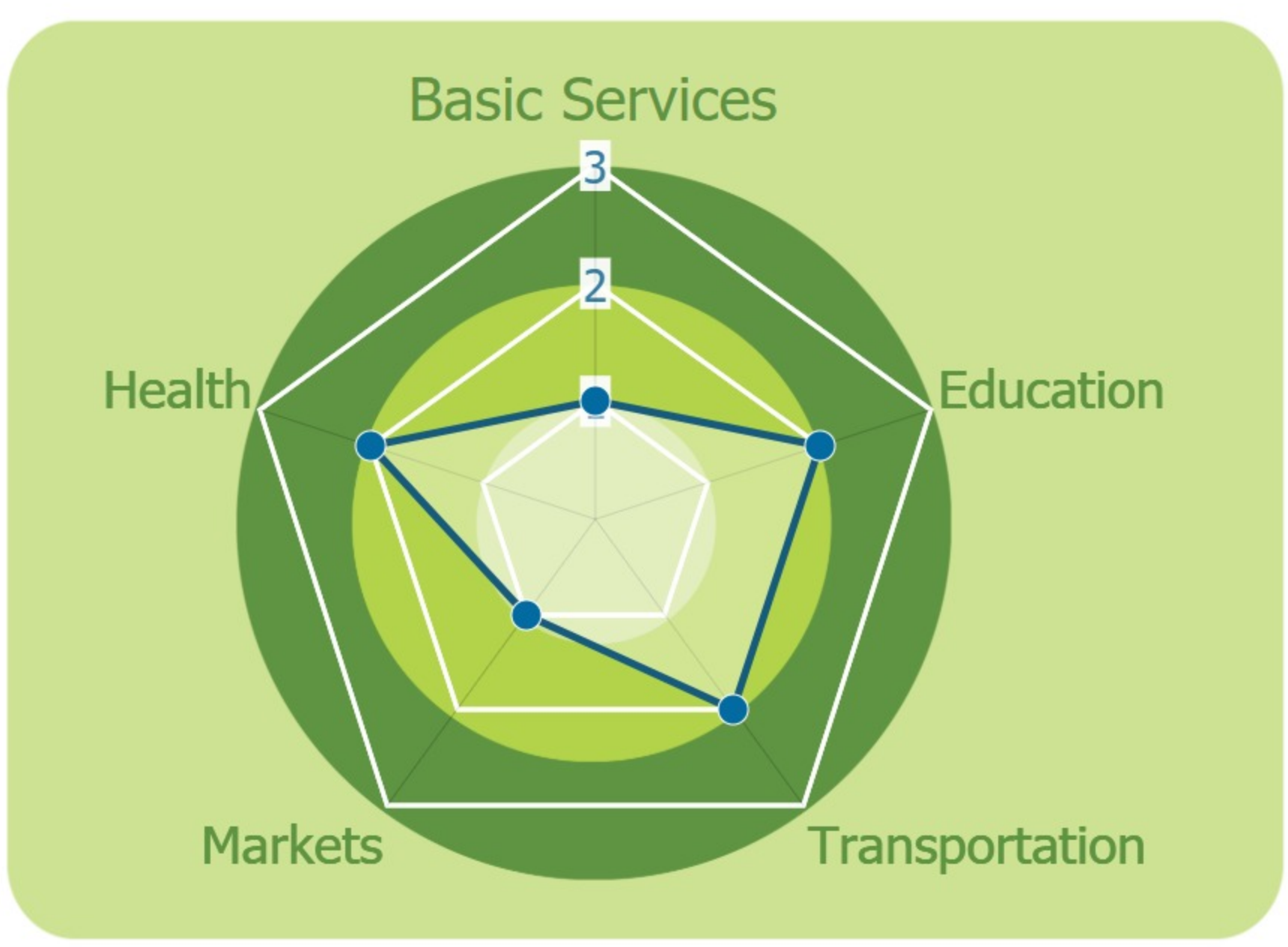
- Rice
- Livestock

Sources of Income:

- Agriculture
- Subsistence agriculture
- Livestock
- Casual labor

Education:

- Kindergarten
- Primary



HEALTH

Water-bourne:
 Allergies
 Diarrhea
 Eye
 Skin

Vector-bourne:
 Dengue
 Encephalitis
 Malaria
 Scrub typhus

CLIMATE CHANGE & DISASTERS

Changes over the past 30 years

1 every 3-5 years
Houses
livelihoods
Health
Less severe

1 every 10 years
Water
Food
Crops
Less severe

1 every 10 years
Homes
Infrastructure
Life
Income
Not changing

No Landslides

DRY SEASON **WET SEASON**

Significant Increase Slight Decrease

Slight Decrease Significant Increase

IMPACTS:
 Health / Water / Agriculture / Livestock

ENVIRONMENTAL ISSUES

Deforestation impacts

- + Industrial develop (+)
- + More agricultural land (+)
- More flooding (-)
- Loss of biodiversity (-)
- Erosion (-)
- Less food sources (-)

Hydropower impacts

No hydropower dam

Mining impacts

No mining activity

VULNERABILITY INDEX

Hazard Intensity: 1.3

Sensitivity: 2.3

Ranking: 2.99

PRIORITIES & NEEDS

1. Construct water facility (borehole)
2. Diversify livelihoods

