

B. Yaoudom (Khummarkkheu, Donggew, Boungwai) (1701037)

Xaysetha District, Attapeu

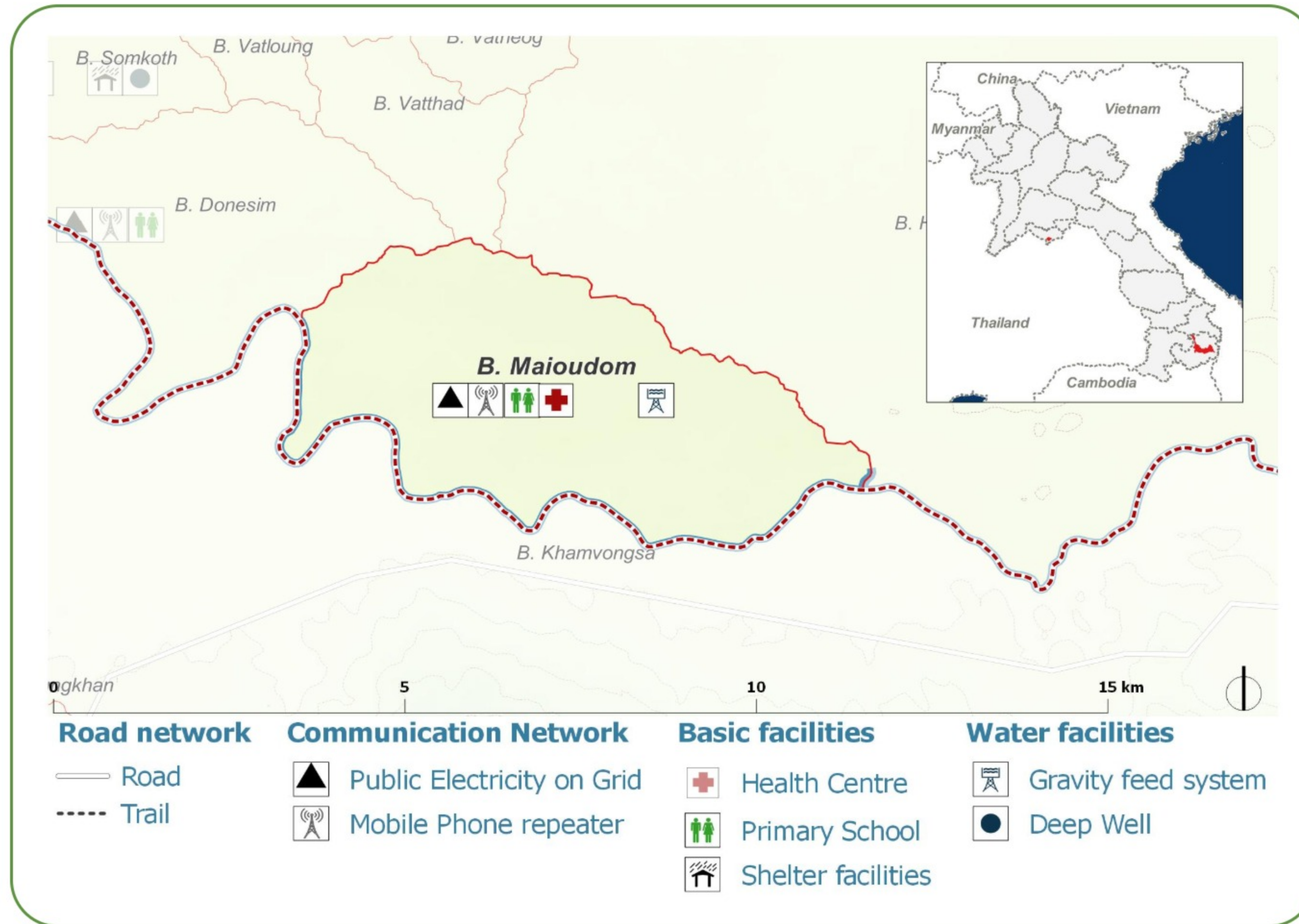
DEMOGRAPHICS

Population (2017):
3032

Main ethnic group:
Brao

Other ethnic group:
Lao

Religion:
Buddhism



Ecosystem & Services:

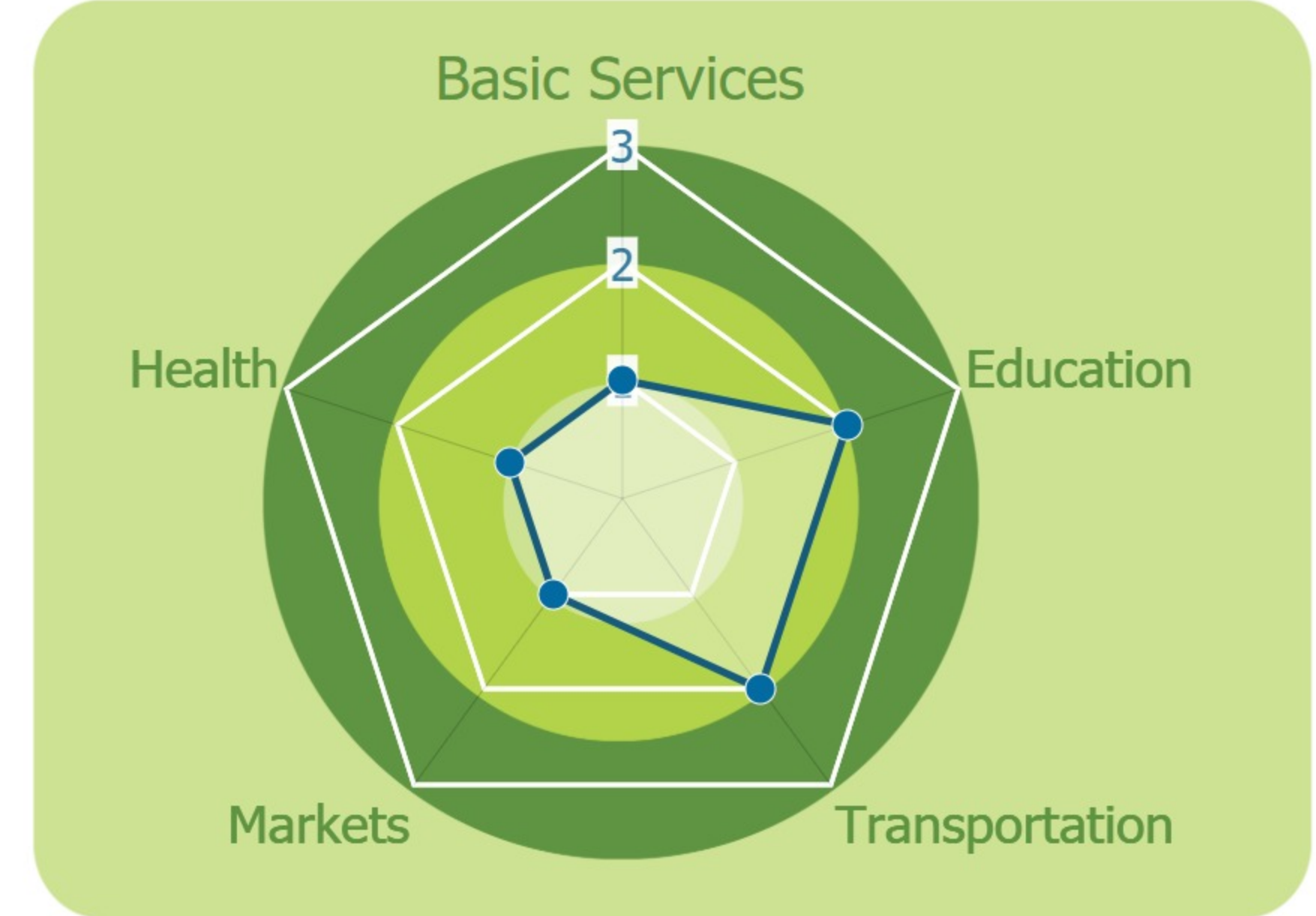
- None

Sources of Income:

- Agriculture
- Subsistence agriculture
- Livestock
- Casual labor

Education:

- Primary
- High school

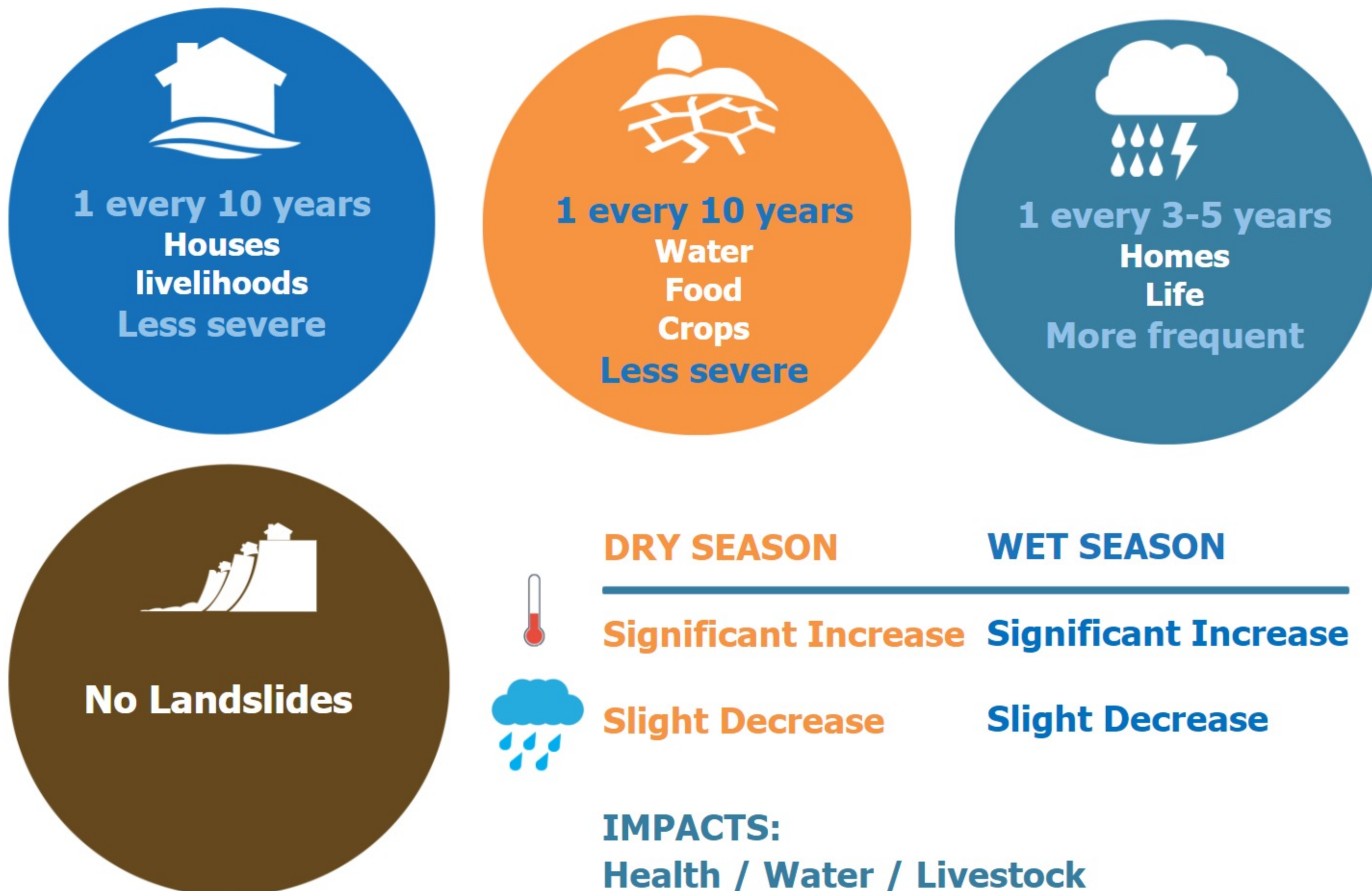


HEALTH

- | | |
|----------------------|-----------------------|
| Water-bourne: | Vector-bourne: |
| Eye | Dengue |
| Skin | Encephalitis |
| | Malaria |

CLIMATE CHANGE & DISASTERS

Changes over the past 30 years



ENVIRONMENTAL ISSUES

Deforestation impacts

- + Industrial develop (+)
- Less food sources (-)

Hydropower impacts

No hydropower dam

Mining impacts

No mining activity

VULNERABILITY INDEX

Hazard Intensity: 1.53

Sensitivity: 2.63

Ranking: 4.04

PRIORITIES & NEEDS

1. Construct water facility (gravity fed)
2. Build latrine (Sanitation)
3. Vaccinate animals/livestock

