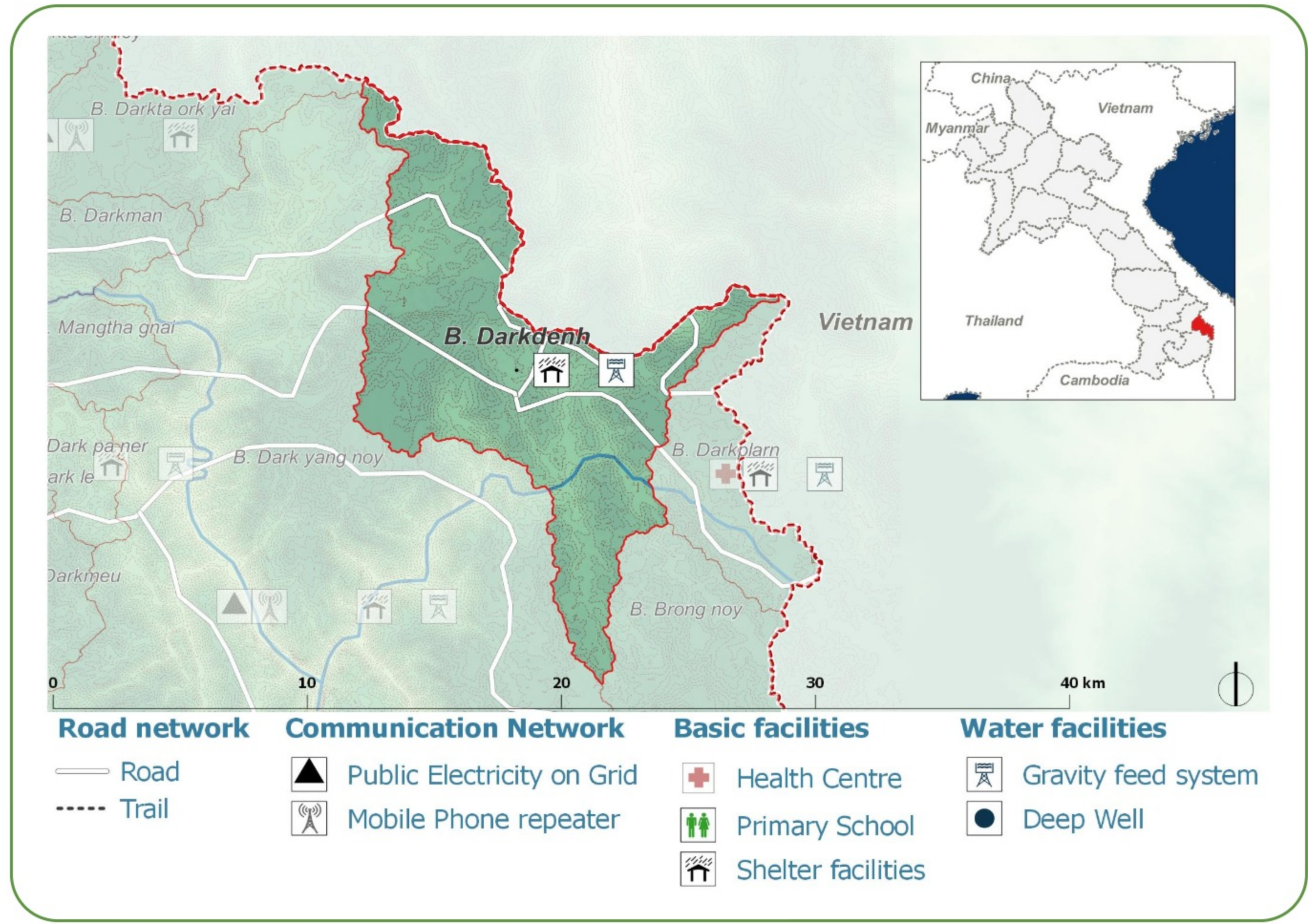
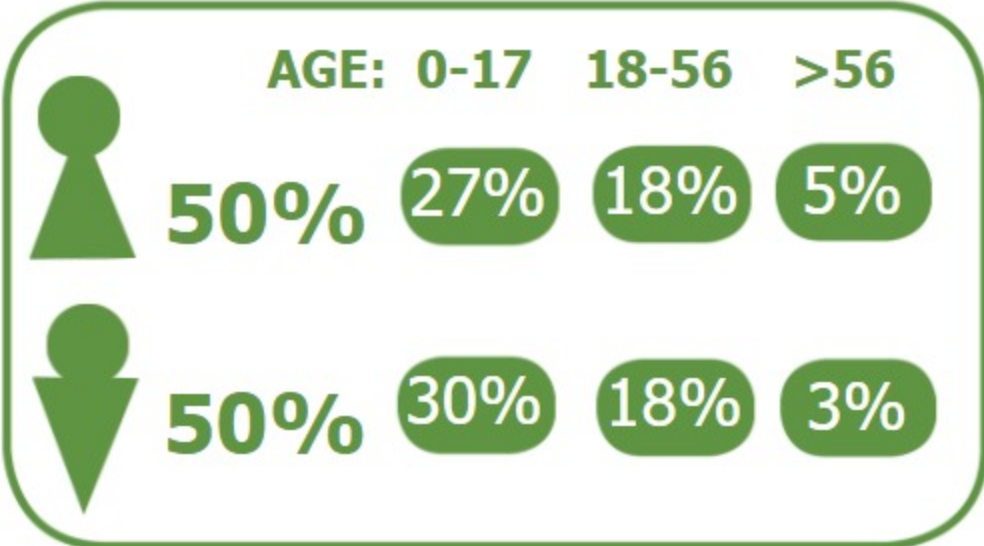


**DEMOGRAPHICS**

Population (2017): **262**  
Main ethnic group: **Yè (Jeh)**  
Other ethnic group: **None**  
Religion: **Animism**



**Ecosystem & Services:**

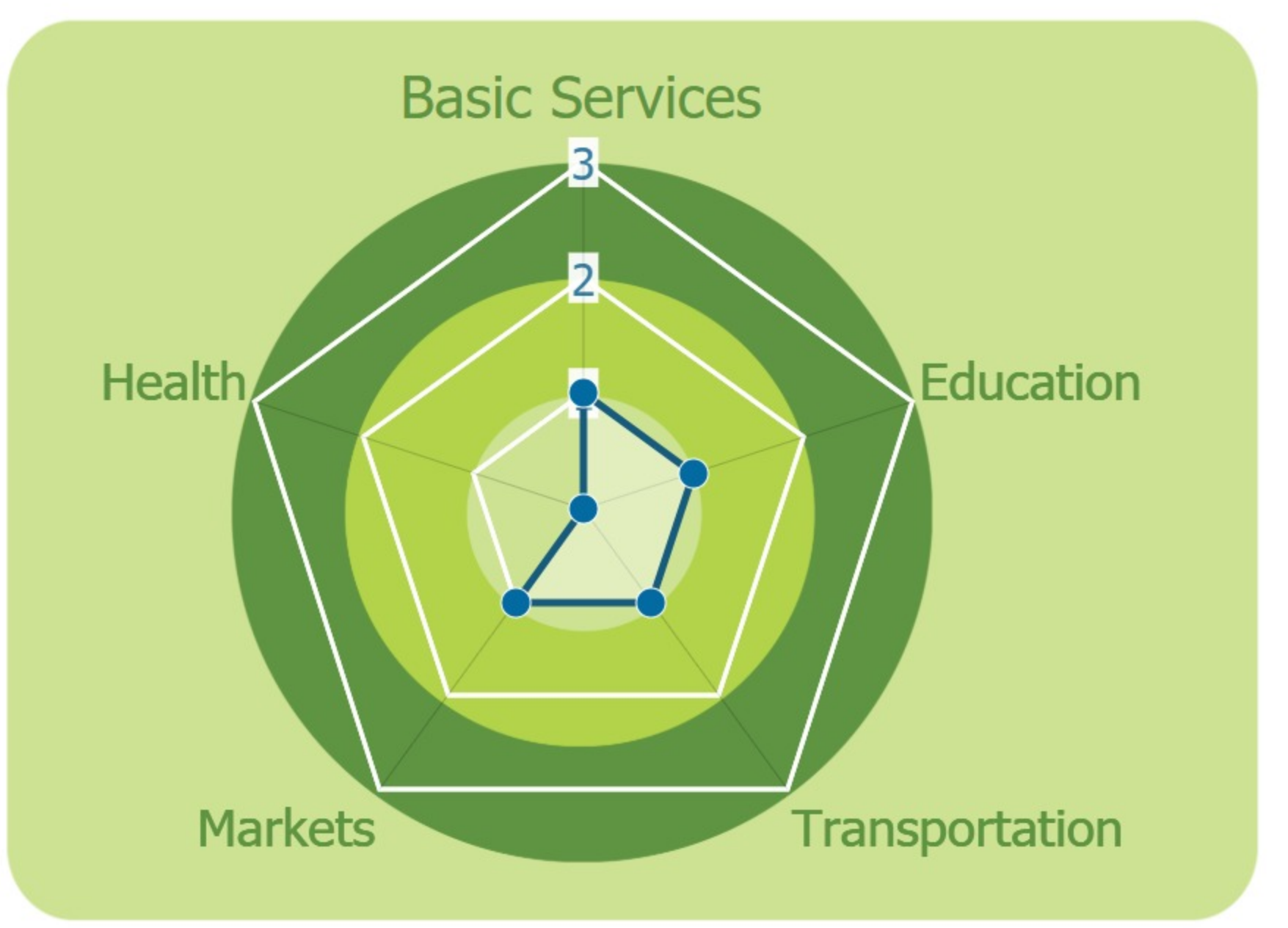
- Rice
- Maize
- Livestock

**Sources of Income:**

- Livestock
- Trade
- Casual labor

**Education:**

- Primary incomplete



**HEALTH**

**Water-bourne:**  
Allergies  
Diarrhea  
Eye  
Skin

**Vector-bourne:**  
Dengue  
Encephalitis  
Malaria

**CLIMATE CHANGE & DISASTERS**  
Changes over the past 30 years

- More than 1 per year **livelihoods**  
Health  
Not changing
- More than 1 per year **Food Crops**  
Not changing
- More than 1 per year **Infrastructure**  
Income  
Not changing

	DRY SEASON	WET SEASON
Temperature	Some increase	Some increase
Precipitation	Some increase	Some increase

**IMPACTS:**  
Health / Agriculture / Livestock

**No Landslides**

**ENVIRONMENTAL ISSUES**

**Deforestation impacts**

- + Industrial develop (+)
- + More agricultural land (+)
- Less food sources (-)

**Hydropower impacts**

No hydropower dam

**Mining impacts**

No mining activity

**VULNERABILITY INDEX**

**Hazard Intensity: 3.4**

**Sensitivity: 3.87**

**Ranking: 13.15**

**PRIORITIES & NEEDS**

1. Improve water facility (gravity fed)
2. Improve pipe distribution system
3. Build latrine (Sanitation)