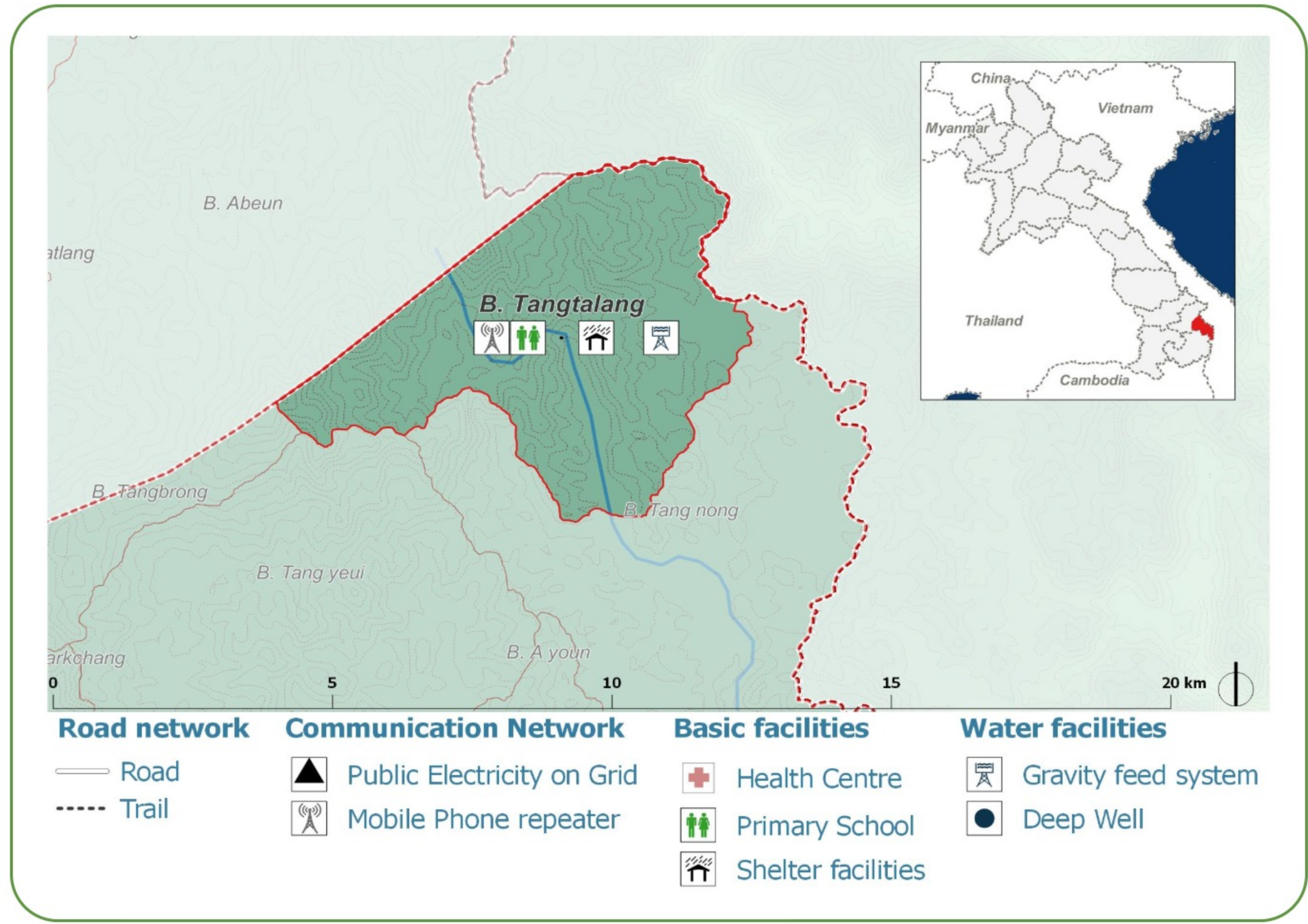
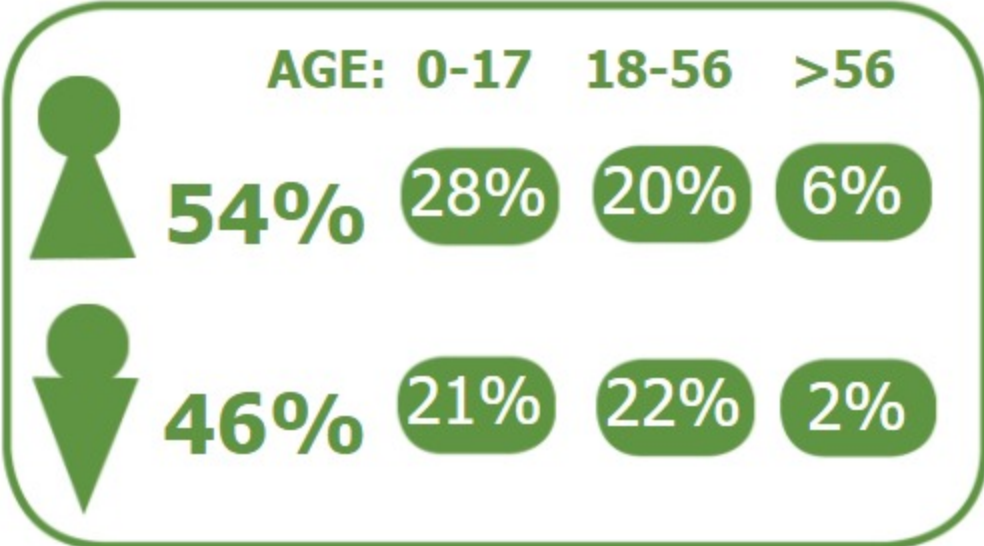


B. Tangtalang (1503068) Dakcheung District, Sekong

DEMOGRAPHICS

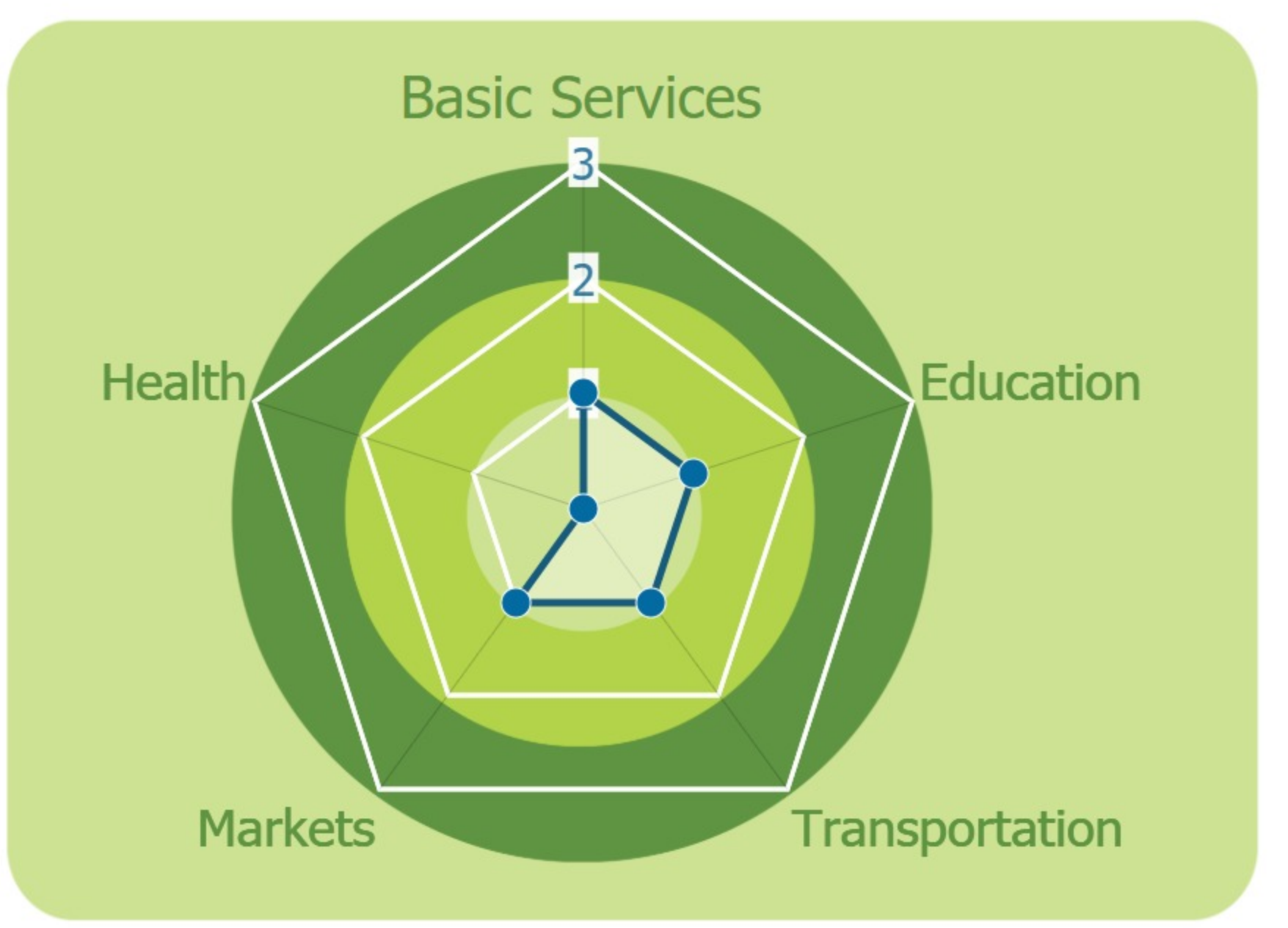
Population (2017): **527**
 Main ethnic group: **Katu**
 Other ethnic group: **None**
 Religion: **Animism**



Ecosystem & Services:
 - **Stream**

Sources of Income:
 - **Agriculture**
 - **Livestock**

Education:
 - **Primary incomplete**
 - **Primary**



HEALTH

Water-bourne:
 Diarrhea
 Eye
 Skin

Vector-bourne:
 Dengue
 Encephalitis
 Malaria

CLIMATE CHANGE & DISASTERS

Changes over the past 30 years

1 every 3-5 years
livelihoods
Health
More severe

More than 1 per year
Water
Crops
More severe

More than 1 per year
Infrastructure
Income
More frequent

DRY SEASON

🌡️ Slight Decrease

☁️ Slight Decrease

WET SEASON

🌡️ Significant Increase

☁️ Significant Increase

IMPACTS:
 Health / Livestock

ENVIRONMENTAL ISSUES

Deforestation impacts

+ Industrial develop (+)	- More flooding (-)
+ Charcoal production (+)	- Loss of biodiversity (-)
	- Landslides
	- Erosion (-)
	- Less food sources (-)

Hydropower impacts

No hydropower dam

Mining impacts

No mining activity

VULNERABILITY INDEX

Hazard Intensity: 2.9

Sensitivity: 4.07

Ranking: 11.79

PRIORITIES & NEEDS

1. Improve water quality
2. Build latrine (Sanitation)

