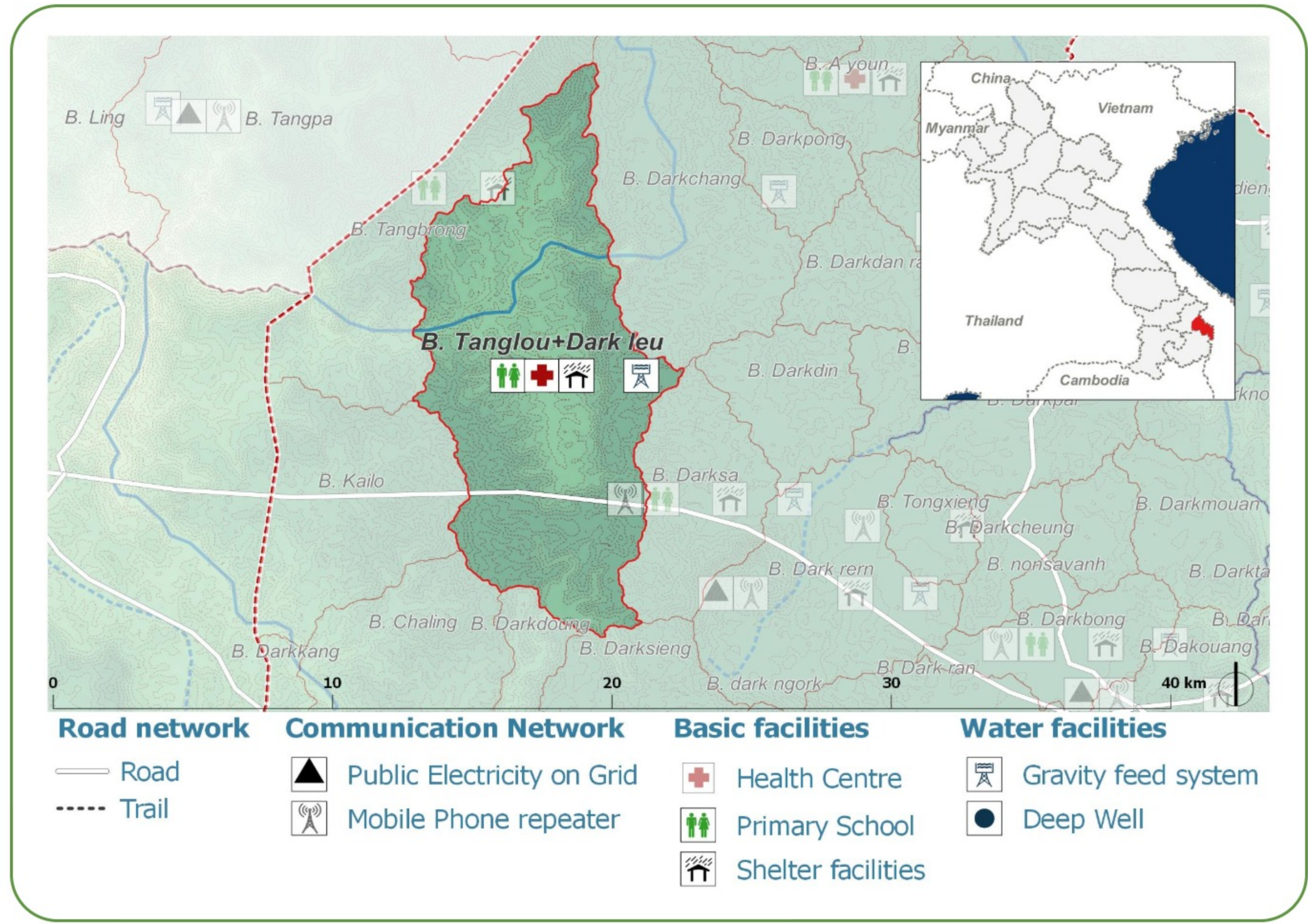
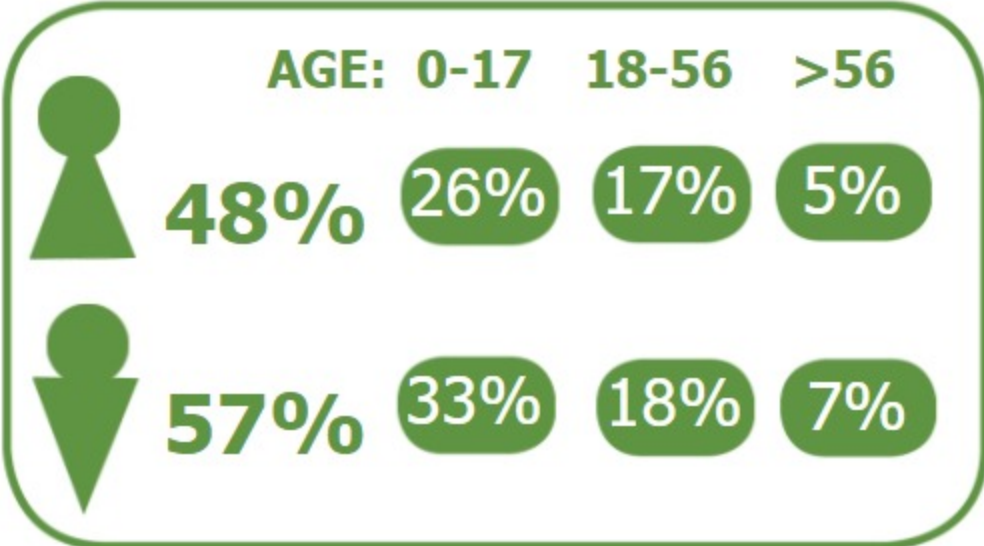


DEMOGRAPHICS

Population (2017): **486**
Main ethnic group: **Katu**
Other ethnic group: **Tariang**
Religion: **Animism**



Ecosystem & Services:

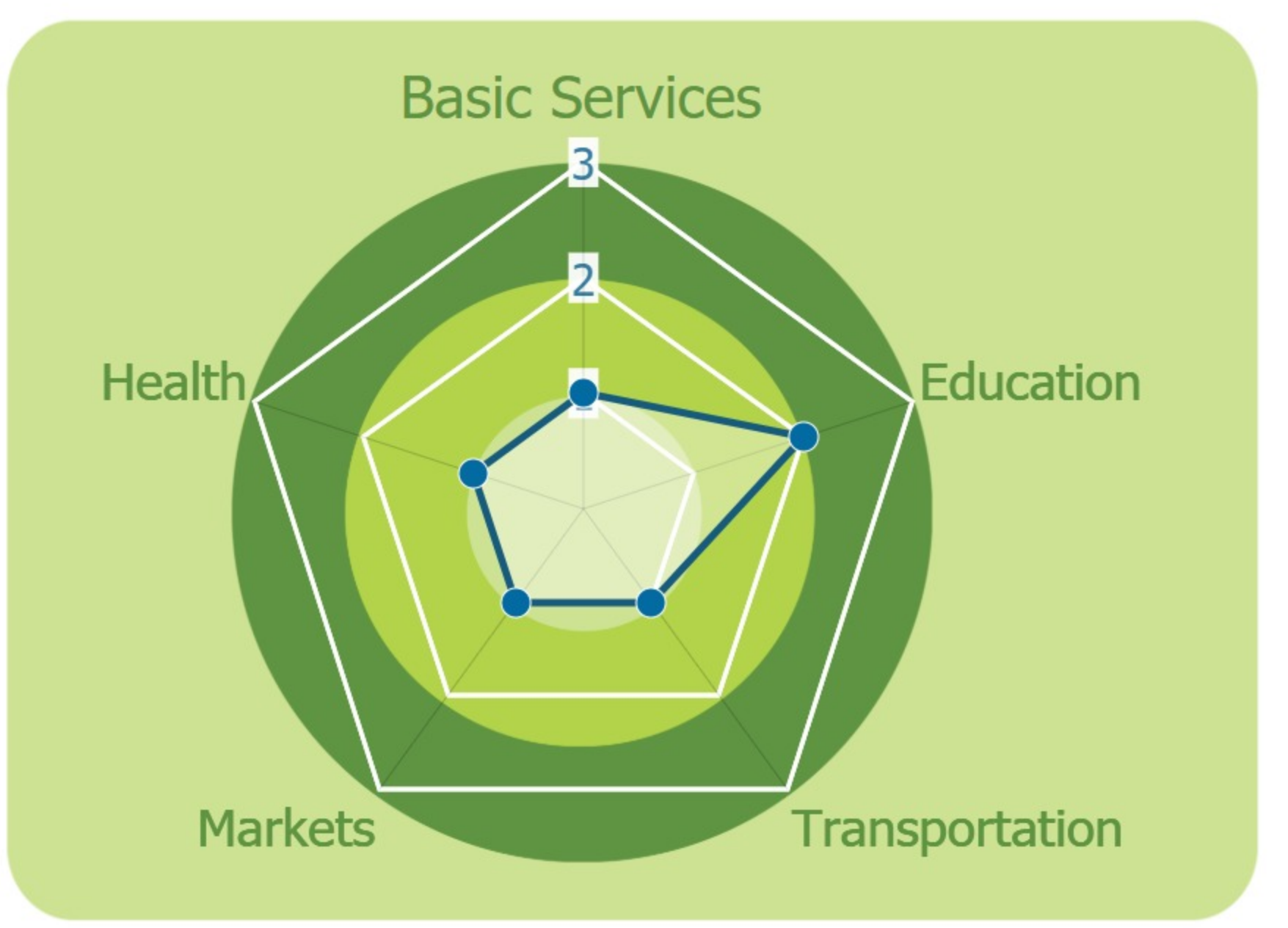
- Rice
- Livestock
- Coffee
- Wood
- Water spring

Sources of Income:

- Subsistence agriculture
- Livestock
- Casual labor

Education:

- Kindergarten
- Primary



HEALTH

Water-bourne: **None**
Vector-bourne: **Dengue, Encephalitis, Malaria**

CLIMATE CHANGE & DISASTERS
Changes over the past 30 years

- 1 per year livelihoods Less severe
- 1 per year Water Food Crops Not changing
- More than 1 per year Homes Infrastructure Income More frequent

DRY SEASON **WET SEASON**

Significant Increase Significant Increase

Significant Increase Significant Increase

IMPACTS:
Health / Agriculture / Livestock

ENVIRONMENTAL ISSUES

Deforestation impacts

- + Industrial develop (+)
- + More agricultural land (+)
- Loss of biodiversity (-)

Hydropower impacts

No hydropower dam

Mining impacts

No mining activity

VULNERABILITY INDEX

Hazard Intensity: 2.47

Sensitivity: 3.23

Ranking: 7.98

PRIORITIES & NEEDS

1. Improve water quality
2. Build latrine (Sanitation)