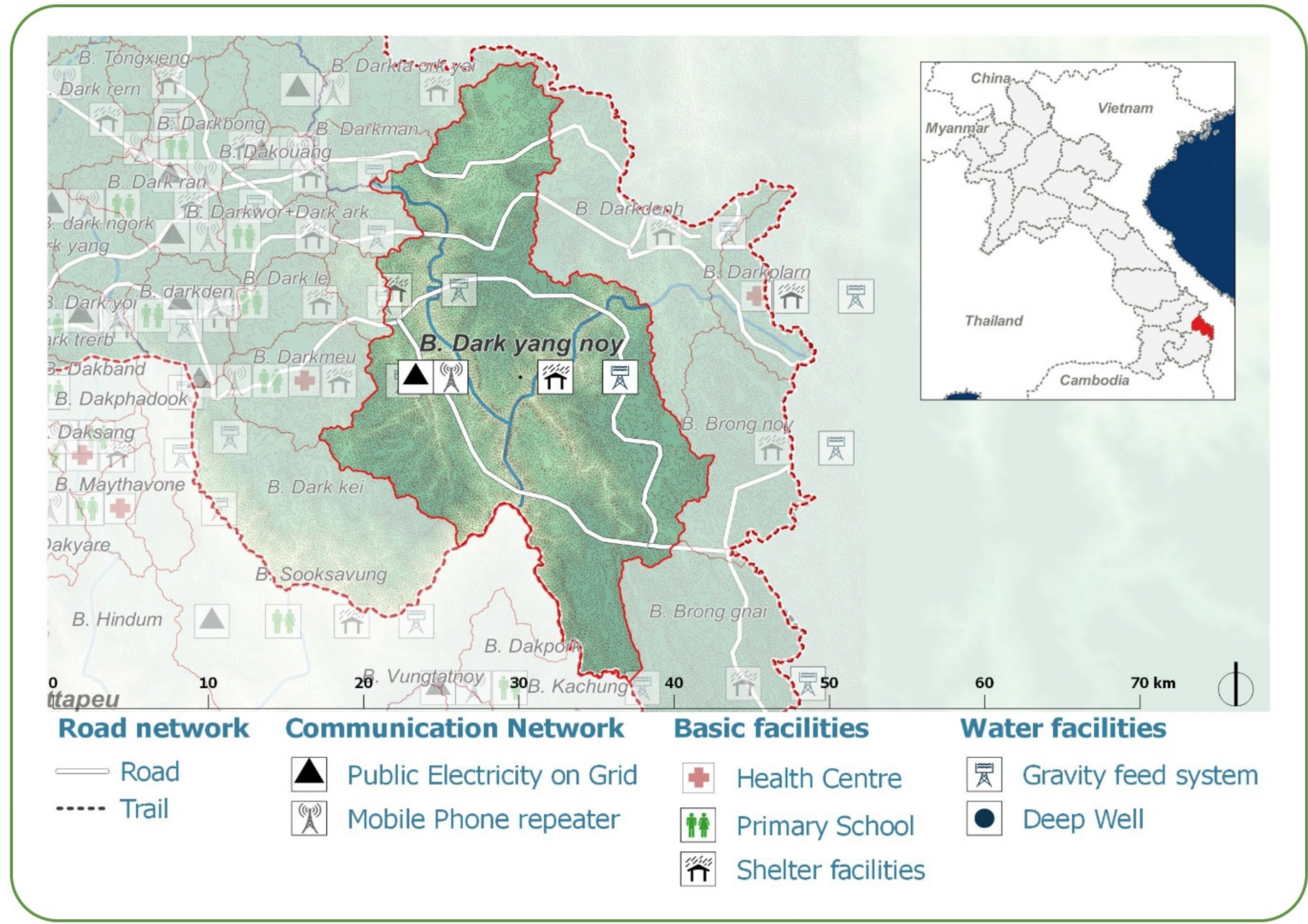
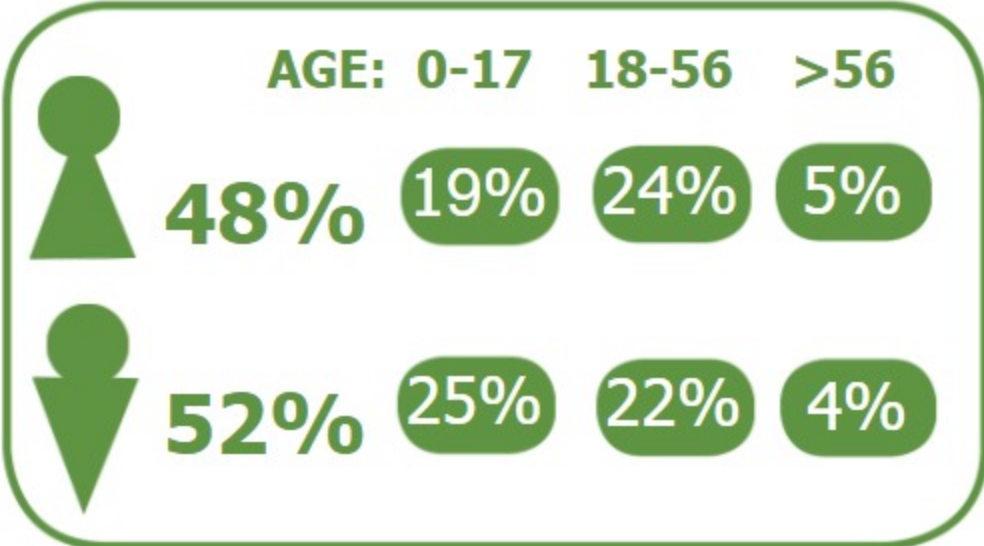


B. Dark yang noy (1503033) Dakcheung District, Sekong

DEMOGRAPHICS

Population (2017): **130**
 Main ethnic group: **Yè (Jeh)**
 Other ethnic group: **None**
 Religion: **Animism**



Ecosystem & Services:

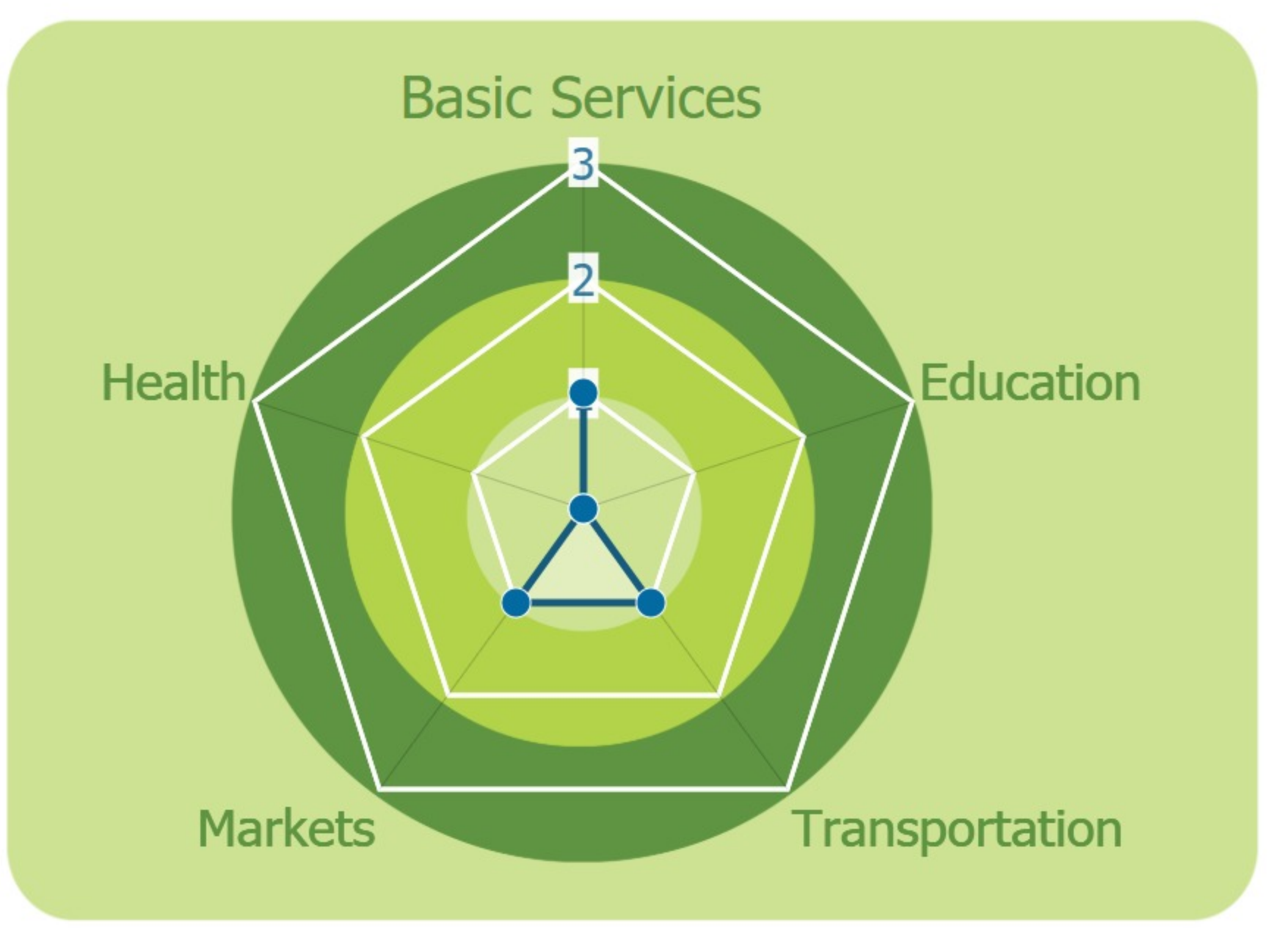
- Livestock
- Coffee
- Grass
- Vegetables
- Wood
- Stream
- River
- Water spring

Sources of Income:

- Agriculture
- Subsistence agriculture
- Livestock
- Casual labor

Education:

- None



HEALTH

Water-bourne:
 Allergies
 Diarrhea
 Skin

Vector-bourne:
 Dengue
 Encephalitis

CLIMATE CHANGE & DISASTERS

Changes over the past 30 years

- No floods
- No droughts
- More than 1 per year
Income Not changing

	DRY SEASON	WET SEASON
Temperature	Significant Increase	Slight increase
Precipitation	Slight Decrease	Some decrease

IMPACTS:
 Health / Water / Agriculture / Livestock

People injured

ENVIRONMENTAL ISSUES

Deforestation impacts

No positive impact

- Loss of biodiversity (-)
- Erosion (-)
- Less food sources (-)

Hydropower impacts

No positive impact

- Changing river flows (-)
- Water availability (-)

Mining impacts

No mining activity

VULNERABILITY INDEX

Hazard Intensity: 1.3

Sensitivity: 3.67

Ranking: 4.77

PRIORITIES & NEEDS

1. Improve water quality
2. Build latrine (Sanitation)

