

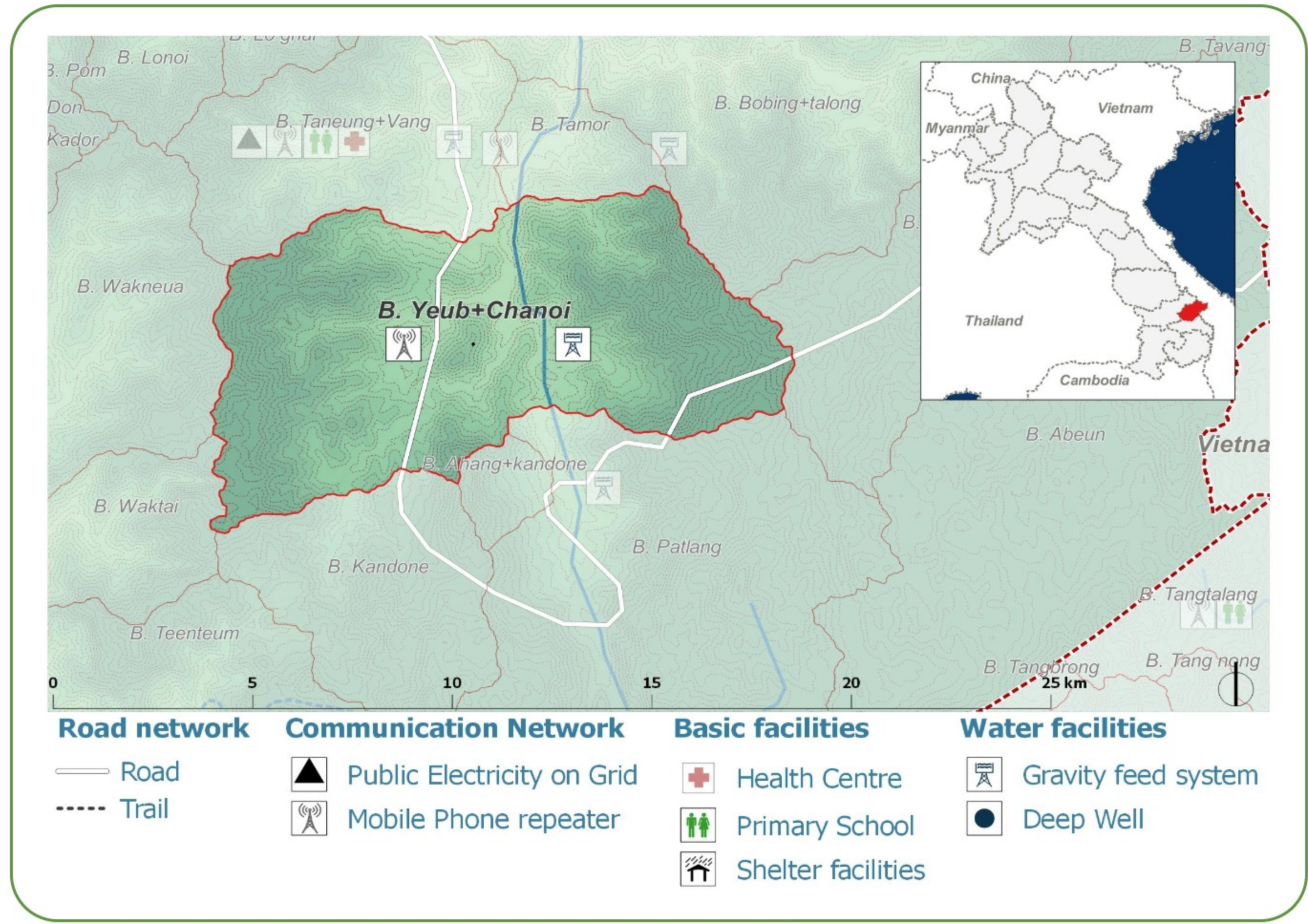
DEMOGRAPHICS

Population (2017):
405

Main ethnic group:
Katu

Other ethnic group:
Ngkriang (Ngè')

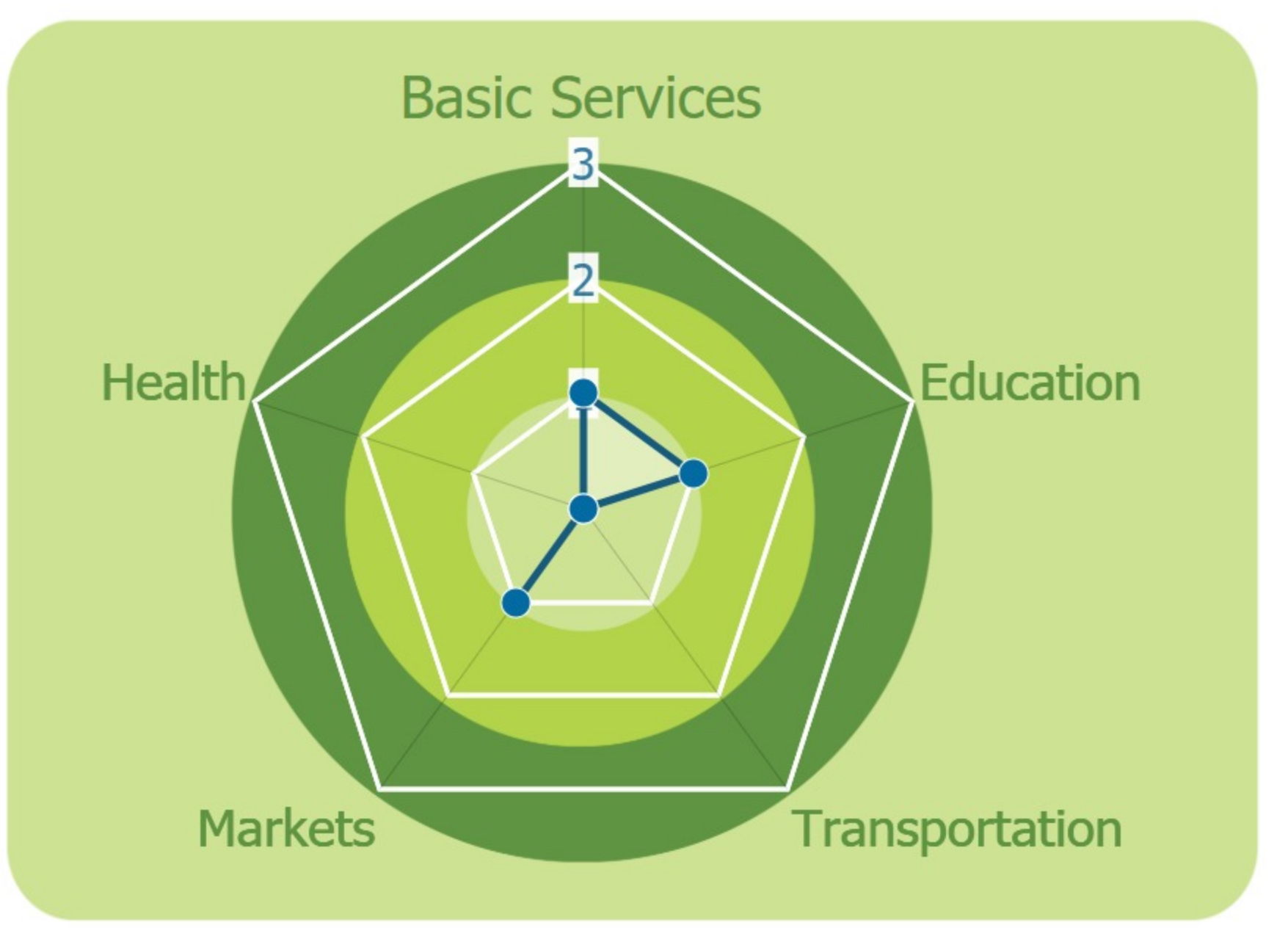
Religion:
Animism



Ecosystem & Services:
- **None**

Sources of Income:
- **Casual labor**

Education:
- **Primary incomplete**



HEALTH

Water-bourne:
Allergies
Diarrhea
Eye
Skin

Vector-bourne:
Dengue
Encephalitis

CLIMATE CHANGE & DISASTERS
Changes over the past 30 years

No floods

No droughts

1 every 10 years Homes Infrastructure Income Less frequent

No Landslides

	DRY SEASON	WET SEASON
Temperature	Significant Increase	No change
Precipitation	Slight Decrease	Some decrease

IMPACTS:
Agriculture / Livestock

ENVIRONMENTAL ISSUES

Deforestation impacts

No positive impact

- Loss of biodiversity (-)
- Landslides
- Less food sources (-)

Hydropower impacts

No hydropower dam

Mining impacts

No mining activity

VULNERABILITY INDEX

Hazard Intensity: 1.1

Sensitivity: 4.13

Ranking: 4.55

PRIORITIES & NEEDS

1. Construct water facility (gravity fed)
2. Build latrine (Sanitation)
3. Vaccinate animals/livestock