

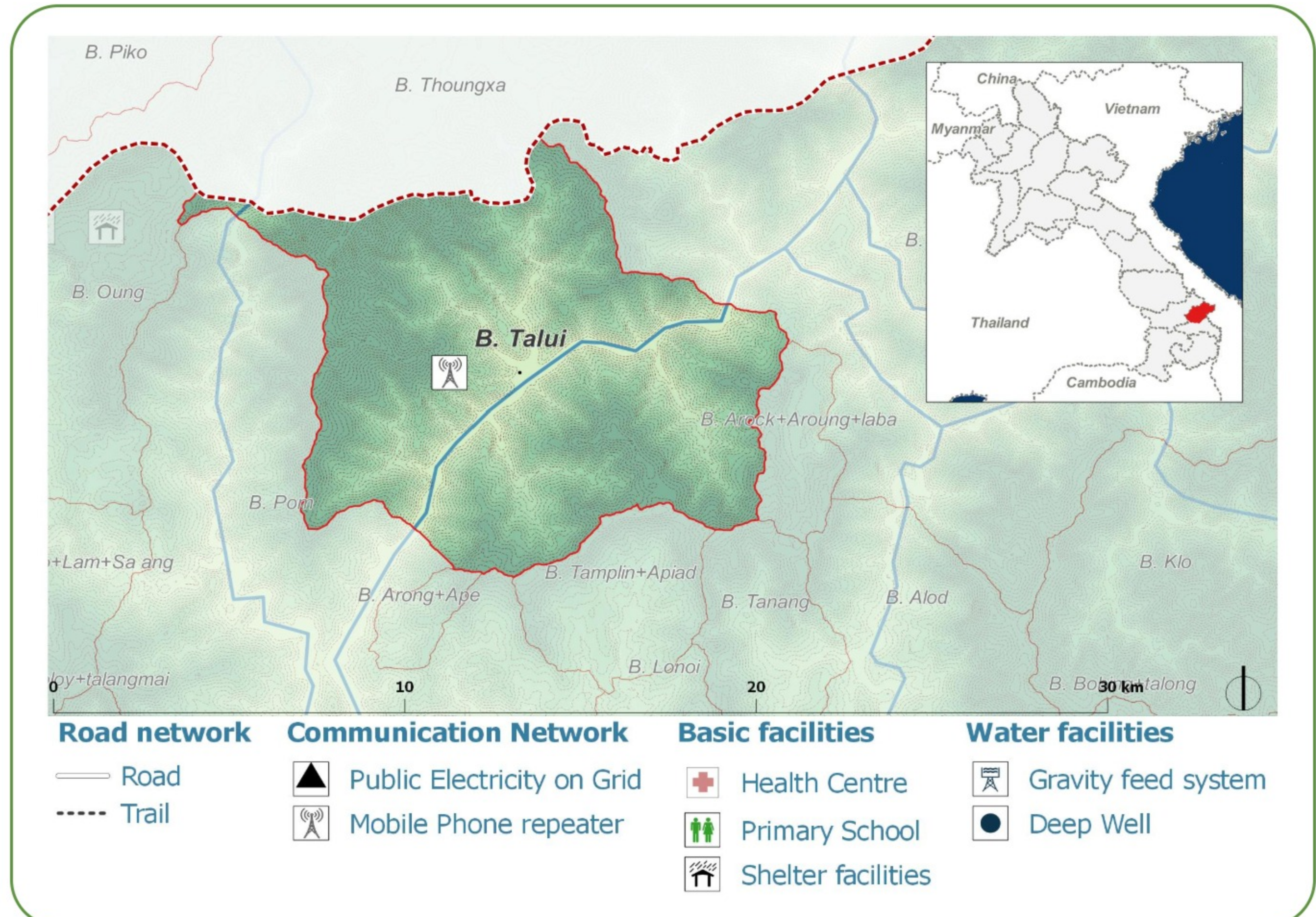
DEMOGRAPHICS

Population (2017):
170

Main ethnic group:
Katu

Other ethnic group:
None

Religion:
Animism



Ecosystem & Services:

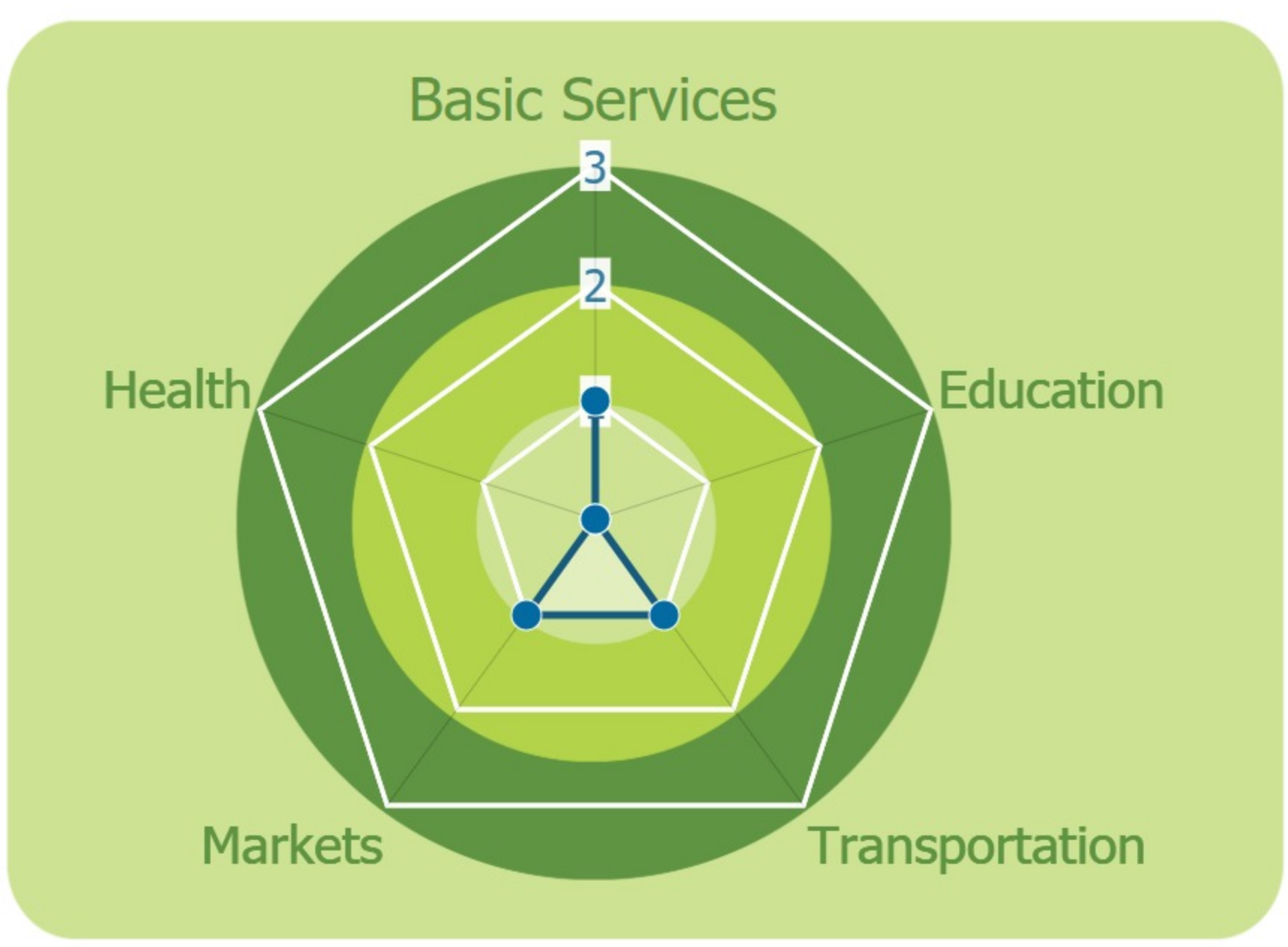
- Grass
- Stream
- Water spring

Sources of Income:

- Casual labor

Education:

- None



HEALTH

Water-bourne:
Allergies
Diarrhea
Eye
Skin

Vector-bourne:
Dengue
Encephalitis
Malaria
Scrub typhus

CLIMATE CHANGE & DISASTERS
Changes over the past 30 years

No floods

No droughts

Never No impact 0

No Landslides

	DRY SEASON	WET SEASON
Significant Increase	Significant Increase	Slight Decrease
Slight Decrease	Slight Decrease	Slight Decrease

IMPACTS:
Health / Water / Agriculture / Livestock

ENVIRONMENTAL ISSUES

Deforestation impacts

- + Charcoal production (+)
- + More agricultural land (+)
- Loss of biodiversity (-)
- Erosion (-)
- Less food sources (-)

Hydropower impacts

No hydropower dam

Mining impacts

No mining activity

VULNERABILITY INDEX

Hazard Intensity: 0.9

Sensitivity: 3.5

Ranking: 3.15

PRIORITIES & NEEDS

1. Construct water facility (gravity fed)
2. Improve water quality
3. Build latrine (Sanitation)