

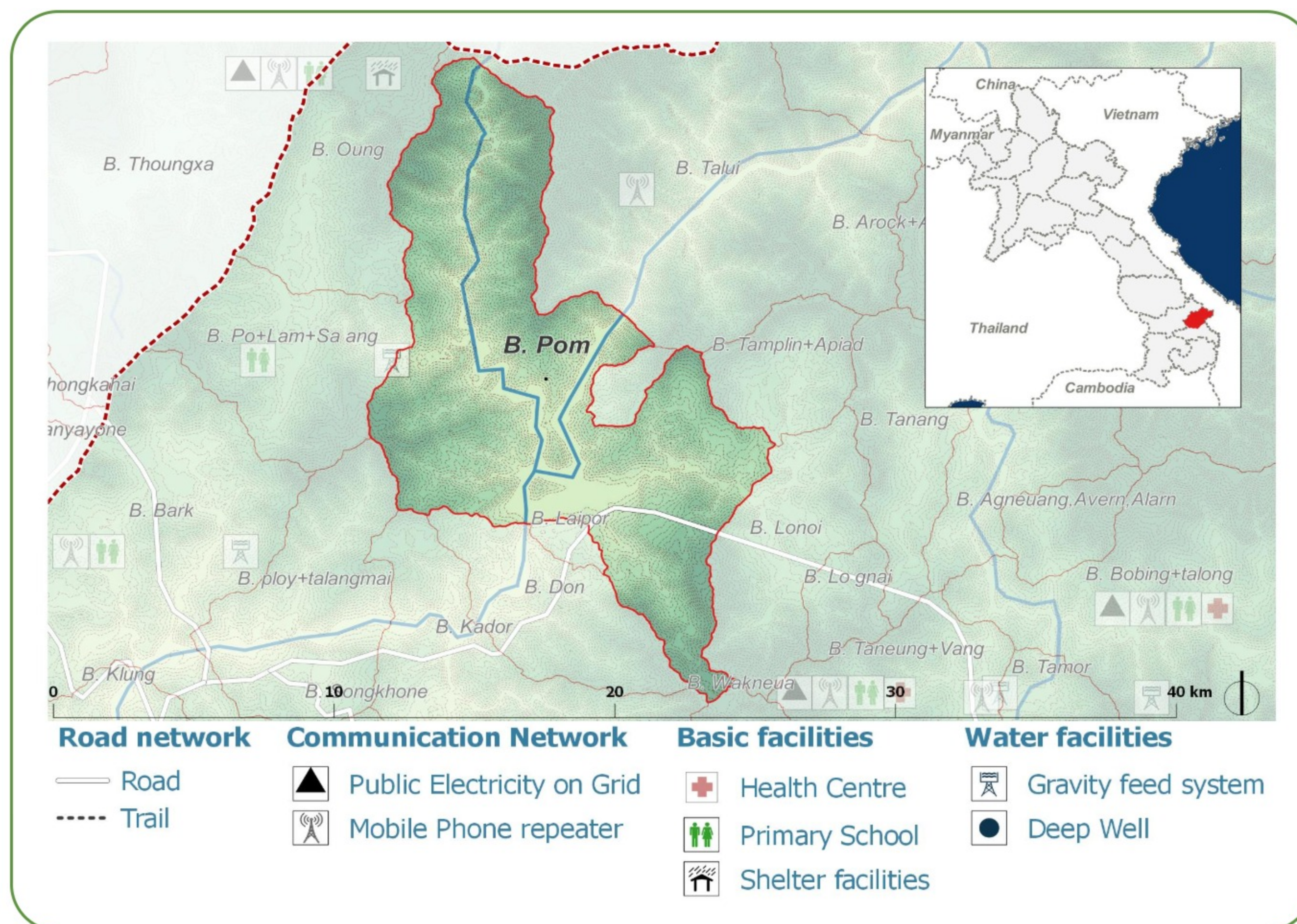
DEMOGRAPHICS

Population (2017):
181

Main ethnic group:
Katu

Other ethnic group:
None

Religion:
Animism



Ecosystem & Services:

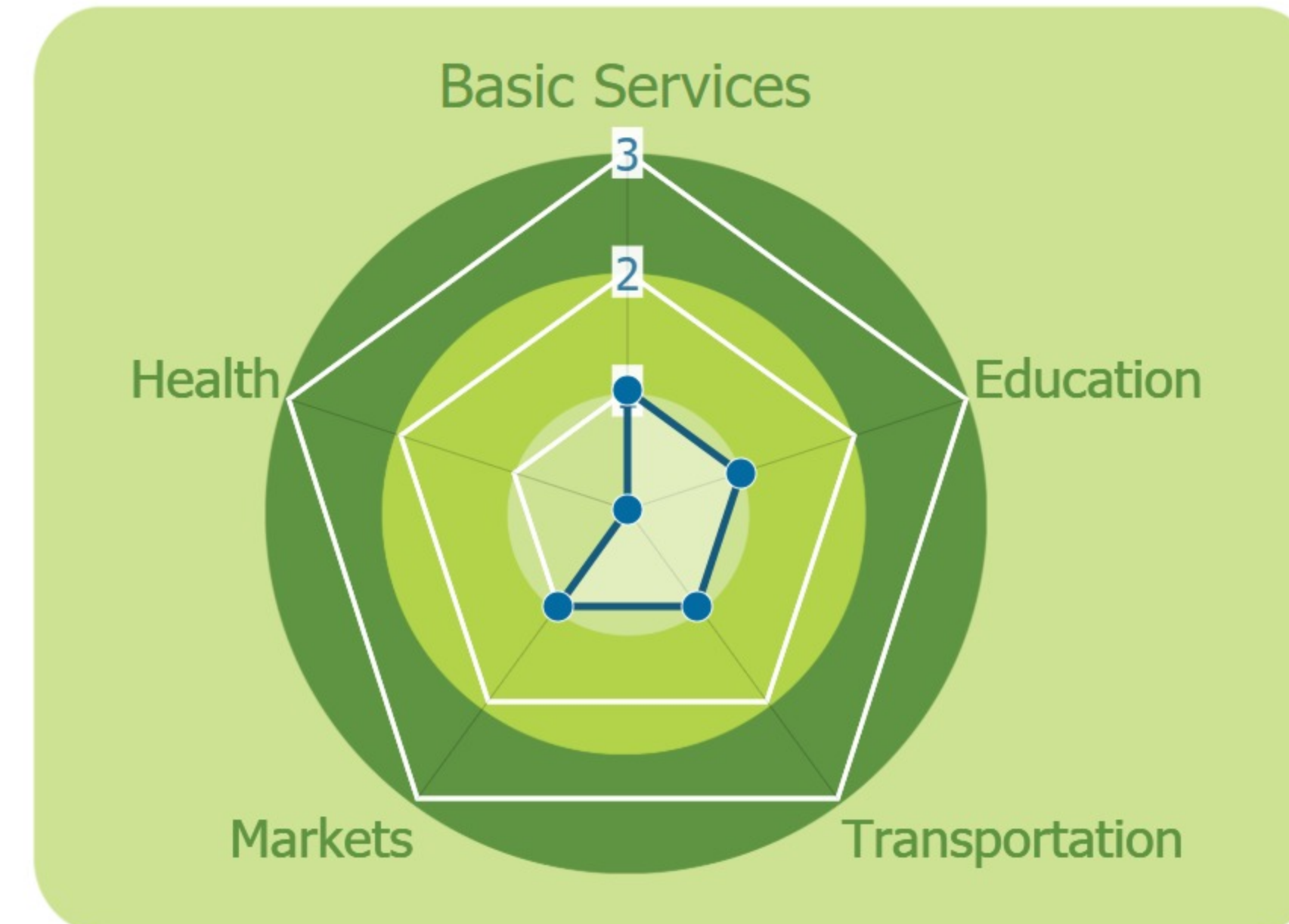
- Grass
- Water spring

Sources of Income:

- Casual labor

Education:

- Primary incomplete



HEALTH

Water-bourne:
Allergies
Diarrhea
Eye
Skin

Vector-bourne:
Dengue
Encephalitis
Malaria

CLIMATE CHANGE & DISASTERS

Changes over the past 30 years

1 every 10 years
livelihoods
Health
Less severe

1 every 10 years
Water
Food
Crops
Less severe

1 every 10 years
Infrastructure
Income
Less frequent

No Landslides

	DRY SEASON	WET SEASON
Temperature	Some increase	Some increase
Precipitation	Slight Decrease	Significant decrease

IMPACTS:
Health / Agriculture / Livestock

ENVIRONMENTAL ISSUES

Deforestation impacts

- + More agricultural land (+)
- Loss of biodiversity (-)
- Less food sources (-)

Hydropower impacts

No hydropower dam

Mining impacts

No mining activity

VULNERABILITY INDEX

Hazard Intensity: 1.63

Sensitivity: 3.93

Ranking: 6.42

PRIORITIES & NEEDS

1. Improve water quality
2. Build latrine (Sanitation)

