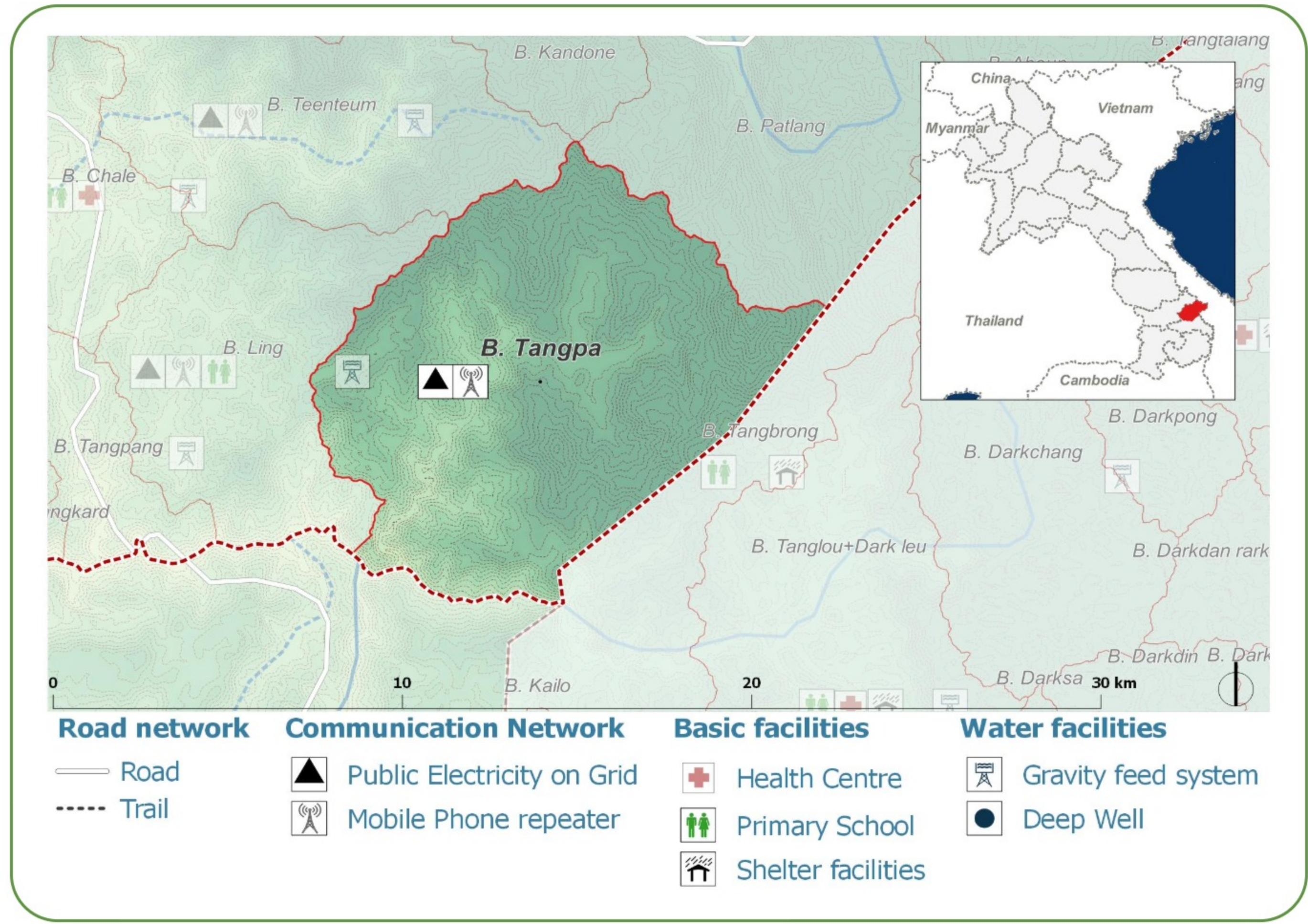
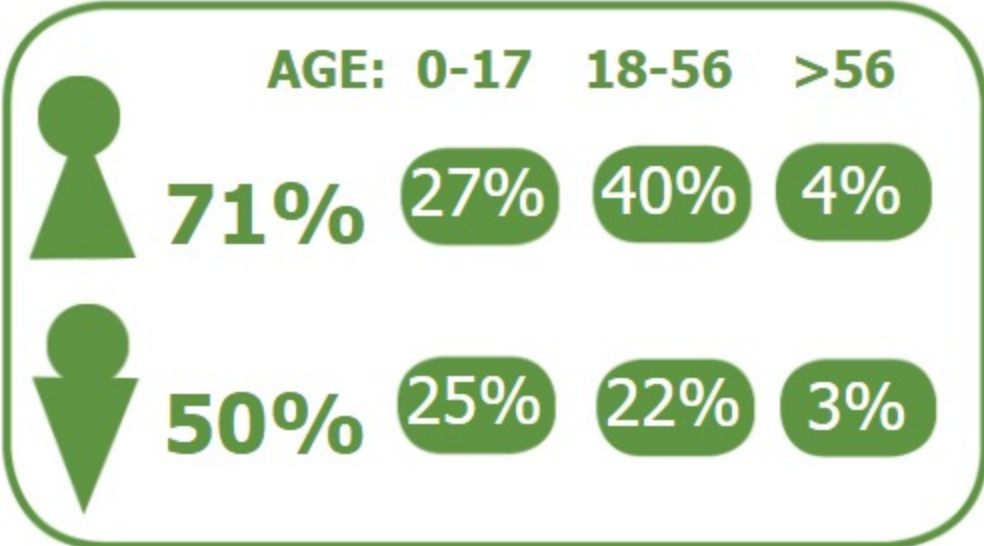


**DEMOGRAPHICS**

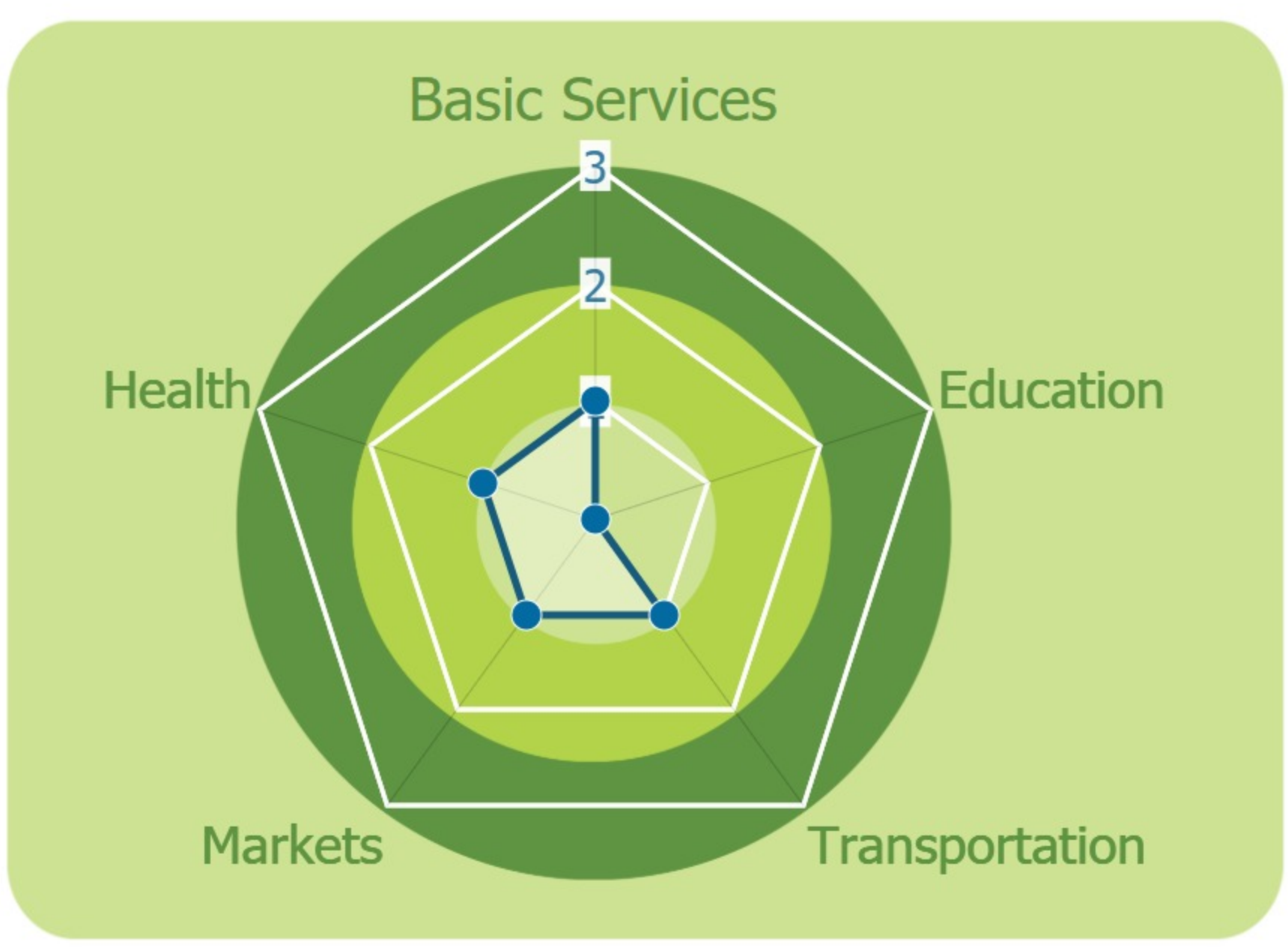
Population (2017): **208**  
 Main ethnic group: **Katu**  
 Other ethnic group: **None**  
 Religion: **Animism**



**Ecosystem & Services:**  
 - None

**Sources of Income:**  
 - **Subsistence agriculture**

**Education:**  
 - None



**HEALTH**

**Water-bourne:**  
 Allergies  
 Diarrhea  
 Eye  
 Skin

**Vector-bourne:**  
 Dengue  
 Encephalitis  
 Malaria

**CLIMATE CHANGE & DISASTERS**

Changes over the past 30 years

**No floods**

**No droughts**

**More than 1 per year Infrastructure Income More frequent**

**People injured**

**DRY SEASON**  
 Slight increase  
 Slight Decrease

**WET SEASON**  
 No change  
 Slight Decrease

**IMPACTS:**  
 Health / Water / Agriculture / Livestock

**ENVIRONMENTAL ISSUES**

**Deforestation impacts**

+ Industrial develop (+)  
 + More agricultural land (+)

- Landslides  
 - Erosion (-)  
 - Less food sources (-)

**Hydropower impacts**

No hydropower dam

**Mining impacts**

No mining activity

**VULNERABILITY INDEX**

**Hazard Intensity: 0.6**

**Sensitivity: 3.07**

**Ranking: 1.84**

**PRIORITIES & NEEDS**

1. Construct water facility (gravity fed)
2. Build latrine (Sanitation)