

B. Hanong neua (1502013)
Kaleum District, Sekong

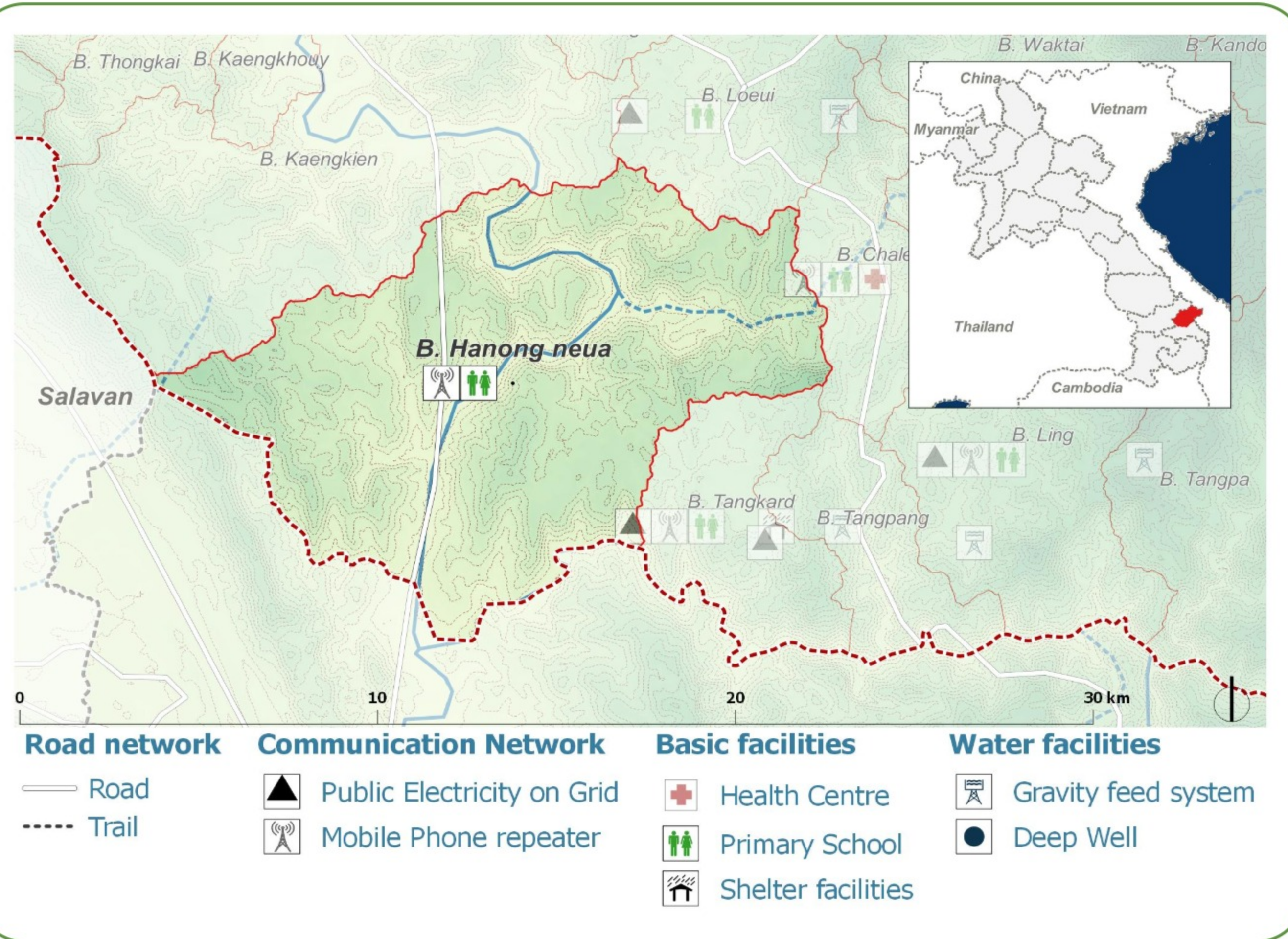
DEMOGRAPHICS

Population (2017):
235

Main ethnic group:
Ngkriang (Ngè')

Other ethnic group:
Katu, Lao

Religion:
Animism



Ecosystem & Services:

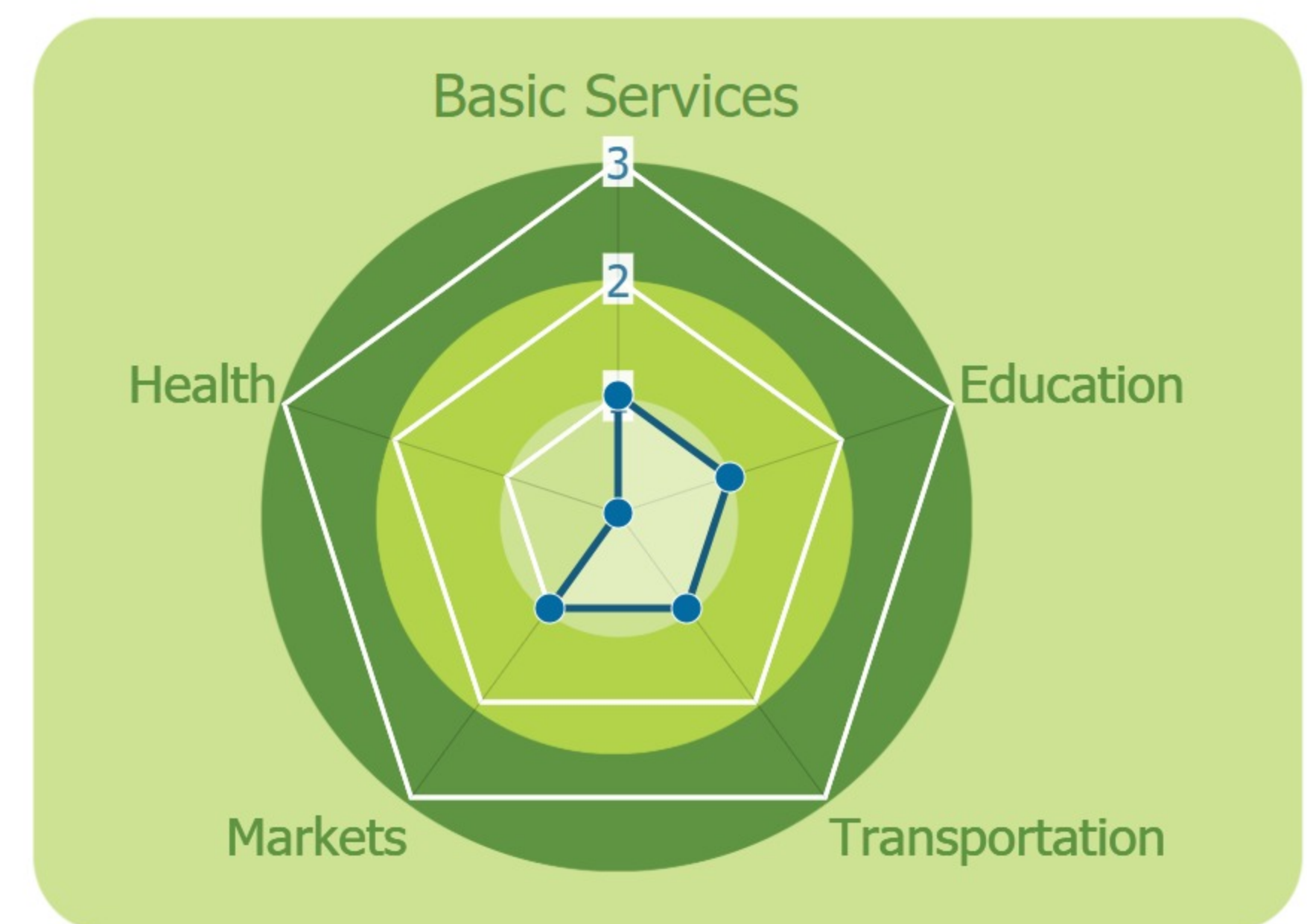
- Grass
- Stream
- Water spring

Sources of Income:

- Livestock
- Casual labor

Education:

- Primary



HEALTH

Water-bourne:
Allergies
Diarrhea
Eye
Skin

Vector-bourne:
Dengue
Encephalitis
Malaria
Scrub typhus



CLIMATE CHANGE & DISASTERS

Changes over the past 30 years

No floods

No droughts

1 every 10 years
Homes
Infrastructure
Income
Less frequent

No Landslides

	DRY SEASON	WET SEASON
Temperature	No change	No change
Precipitation	Slight Decrease	Significant Increase

IMPACTS:
Health / Livestock



ENVIRONMENTAL ISSUES

Deforestation impacts

No positive impact

- Loss of biodiversity (-)
- Less food sources (-)

Hydropower impacts

No hydropower dam

Mining impacts

No mining activity

VULNERABILITY INDEX

Hazard Intensity: 0.6

Sensitivity: 3.43

Ranking: 2.06

PRIORITIES & NEEDS

1. Build latrine (Sanitation)
2. Vaccinate animals/livestock



UN HABITAT
FOR A BETTER URBAN FUTURE

