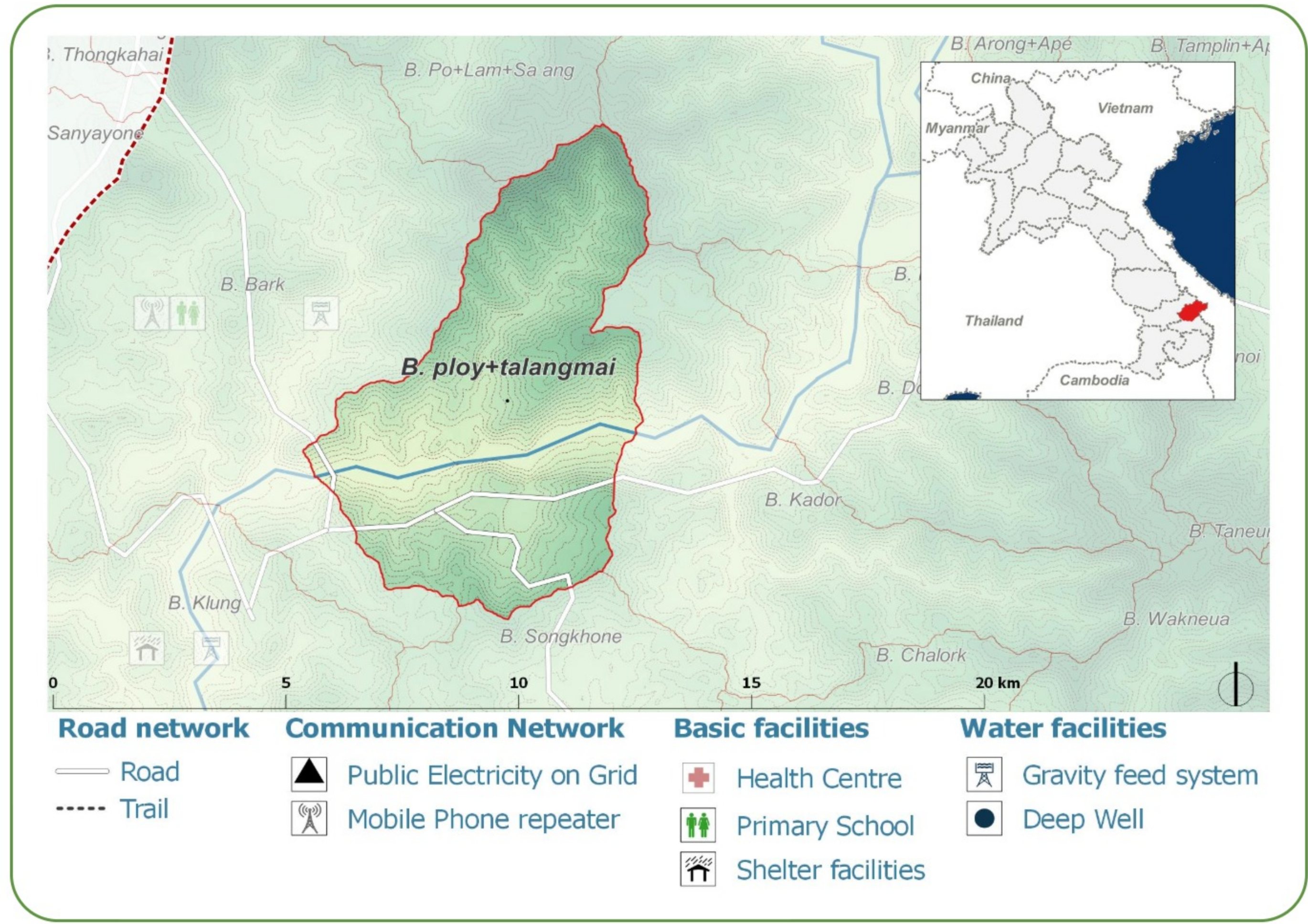
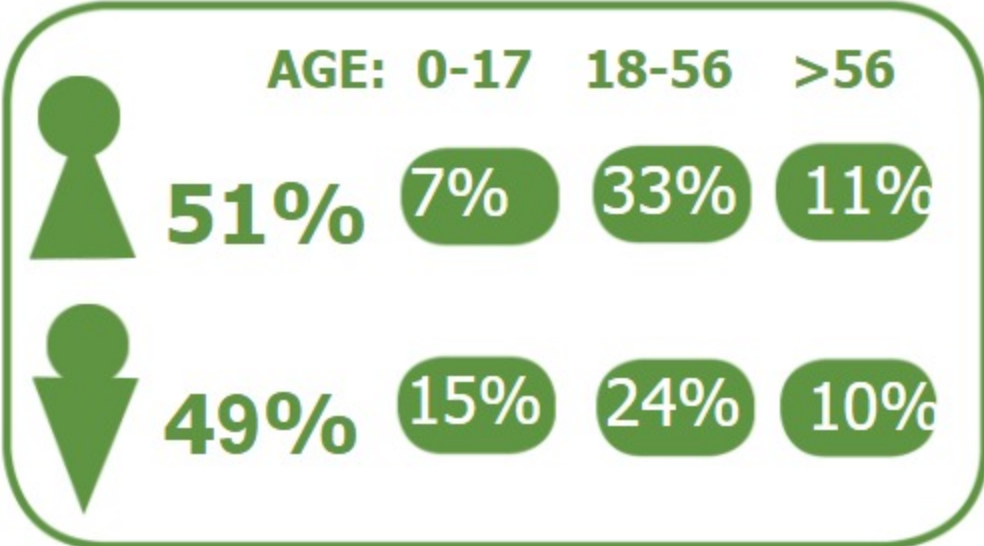


B. Ploy+Talangmai (1502007) Kaleum District, Sekong

DEMOGRAPHICS

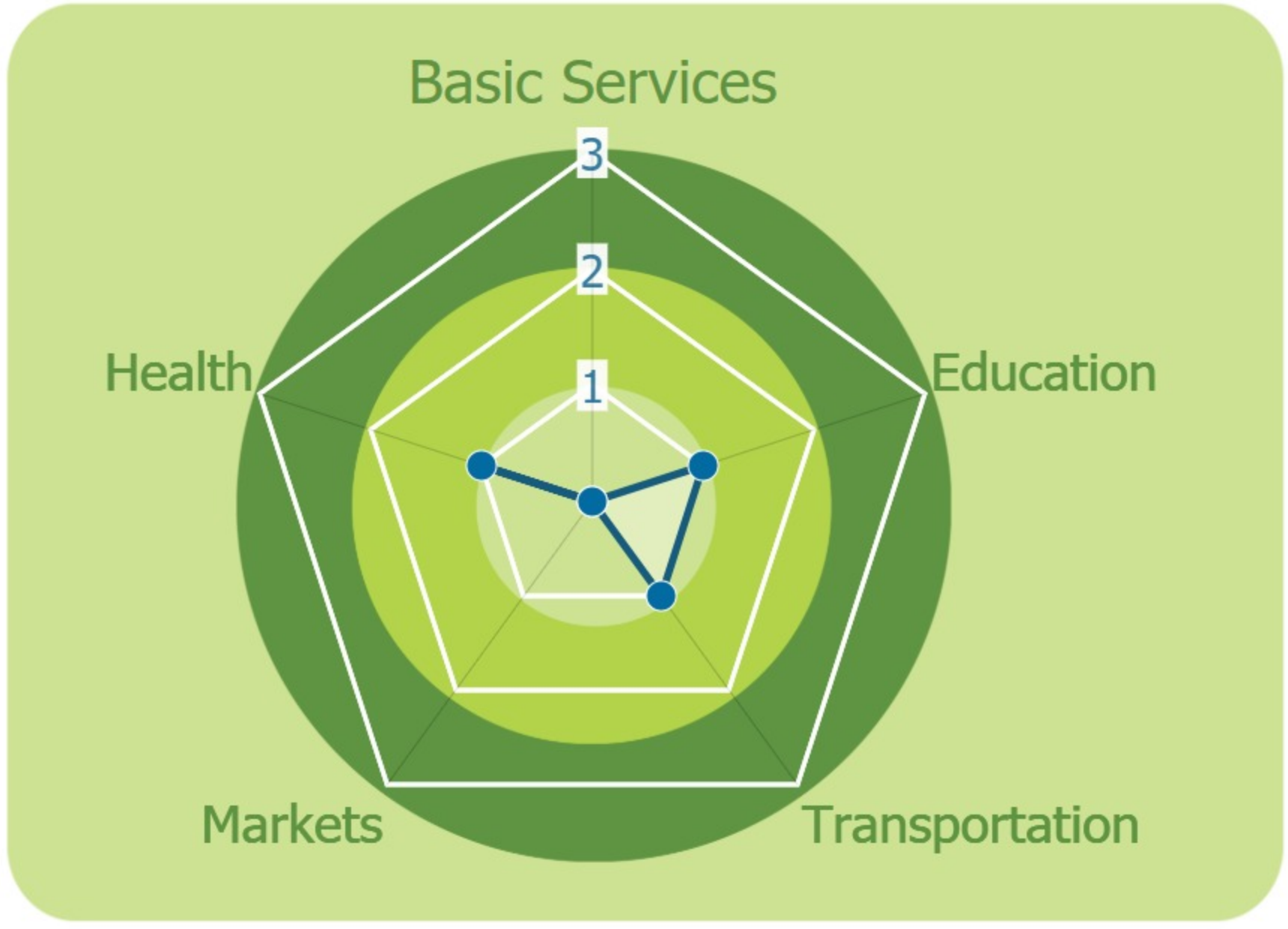
Population (2017): **300**
 Main ethnic group: **Ngkriang (Ngè')**
 Other ethnic group: **None**
 Religion: **Animism**



Ecosystem & Services:
 - **Stream**

Sources of Income:
 - **Subsistence agriculture**

Education:
 - **Primary incomplete**



HEALTH

Water-bourne:
 Allergies
 Diarrhea
 Eye
 Skin

Vector-bourne:
 Dengue
 Encephalitis
 Malaria

CLIMATE CHANGE & DISASTERS

Changes over the past 30 years

<p>1 every 10 years Houses livelihoods Health Less severe</p>	<p>1 every 3-5 years Water Food Crops More severe</p>	<p>More than 1 per year Homes Infrastructure Income Less frequent</p>
--	--	--

	DRY SEASON	WET SEASON
Temperature	Slight increase	Slight increase
Precipitation	Slight Decrease	Slight Decrease

IMPACTS:
 Health / Water / Agriculture / Livestock

ENVIRONMENTAL ISSUES

Deforestation impacts

+ Industrial develop (+)	- Loss of biodiversity (-)
+ More agricultural land (+)	- Less food sources (-)

Hydropower impacts

No hydropower dam

Mining impacts

No mining activity

VULNERABILITY INDEX

Hazard Intensity: 1.33
Sensitivity: 3.9
Ranking: 5.2

PRIORITIES & NEEDS

1. Improve water quality
2. Build latrine (Sanitation)
3. Training; management and maintenance (Sanitation)

