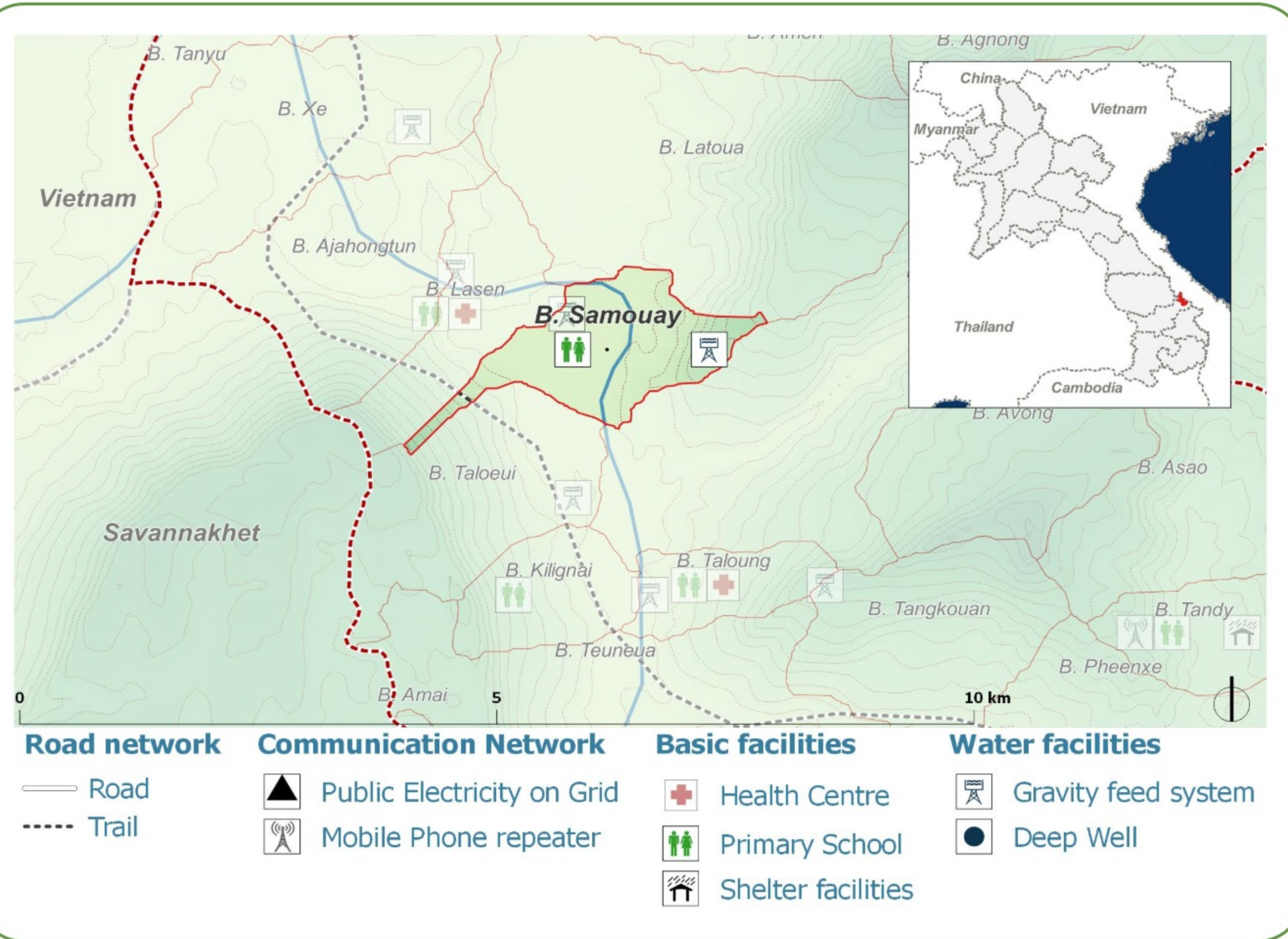
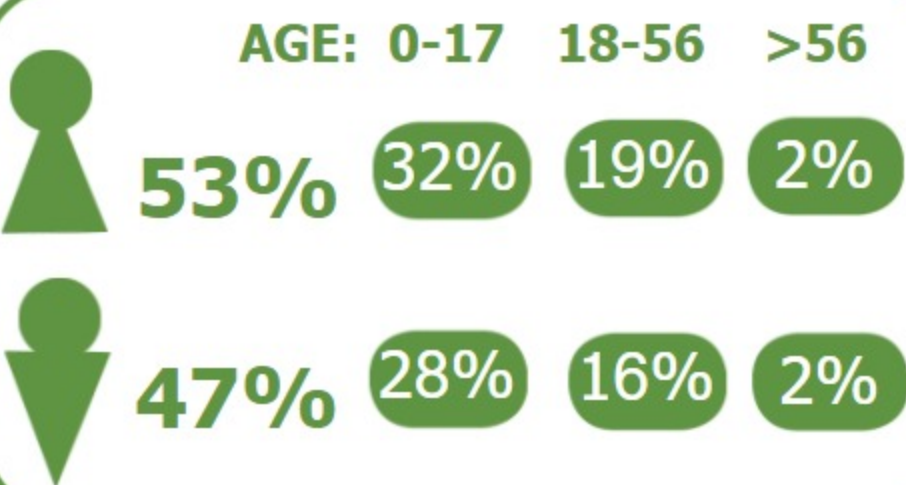


DEMOGRAPHICS

Population (2017):
137
Main ethnic group:
Kado
Other ethnic group:
None
Religion:
Animism



Ecosystem & Services:

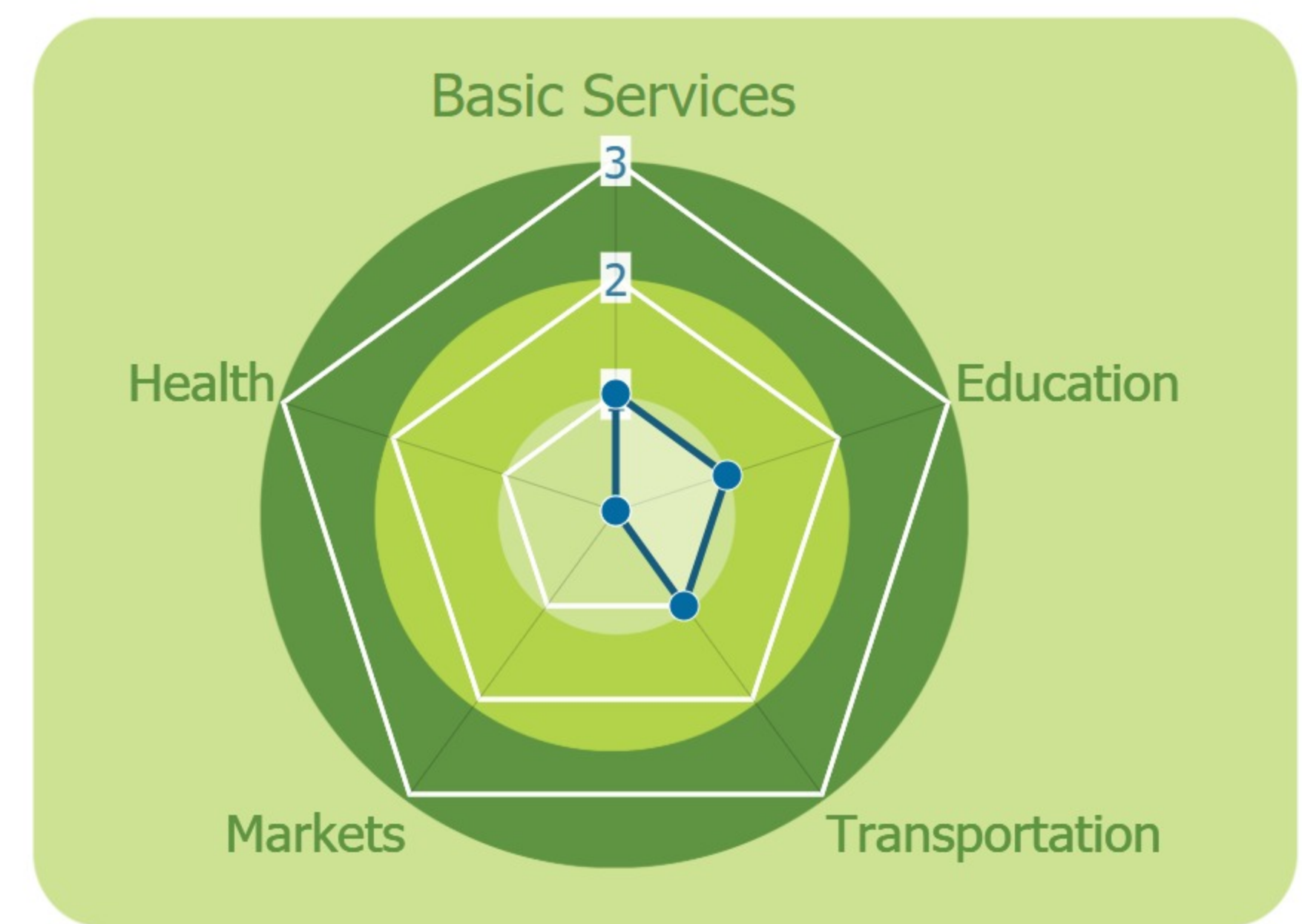
- None

Sources of Income:

- NTFP

Education:

- Primary

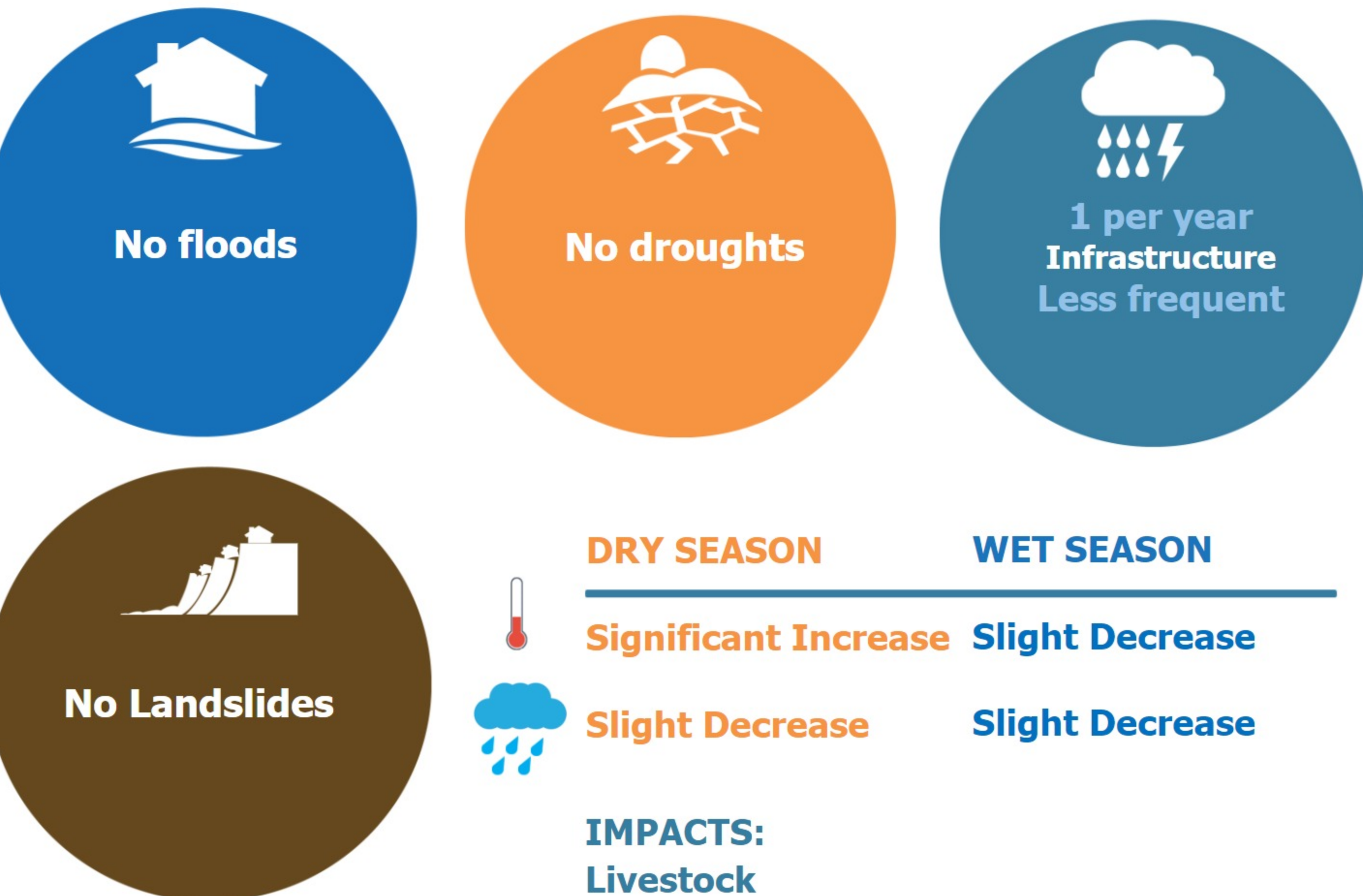


HEALTH

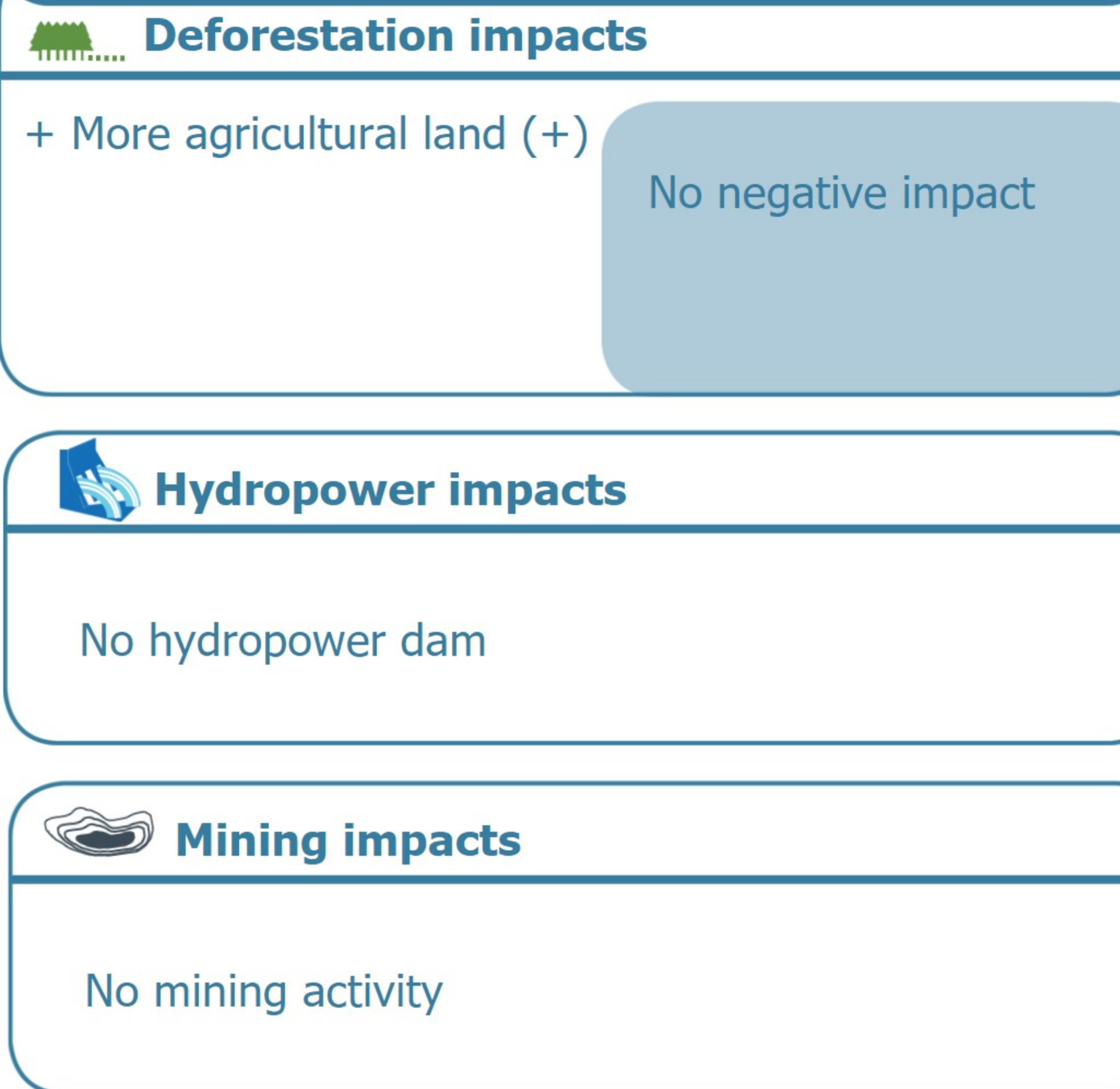
Water-bourne: **None**
Vector-bourne: **None**

CLIMATE CHANGE & DISASTERS

Changes over the past 30 years



ENVIRONMENTAL ISSUES



VULNERABILITY INDEX

Hazard Intensity: 1.9
Sensitivity: 4
Ranking: 7.6

PRIORITIES & NEEDS

1. Construct pipe distribution system
2. Construct storage
3. Build latrine (Health)