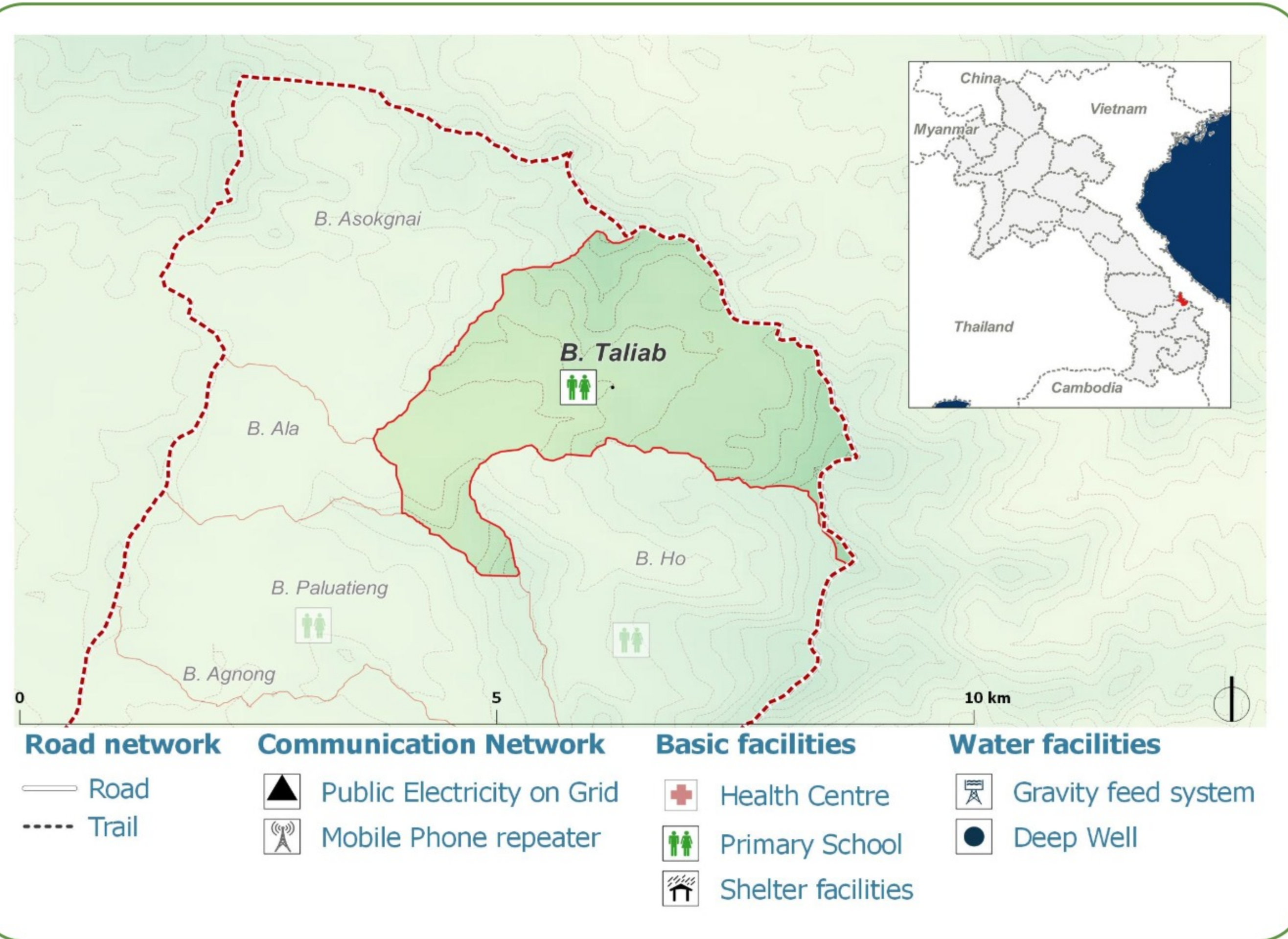
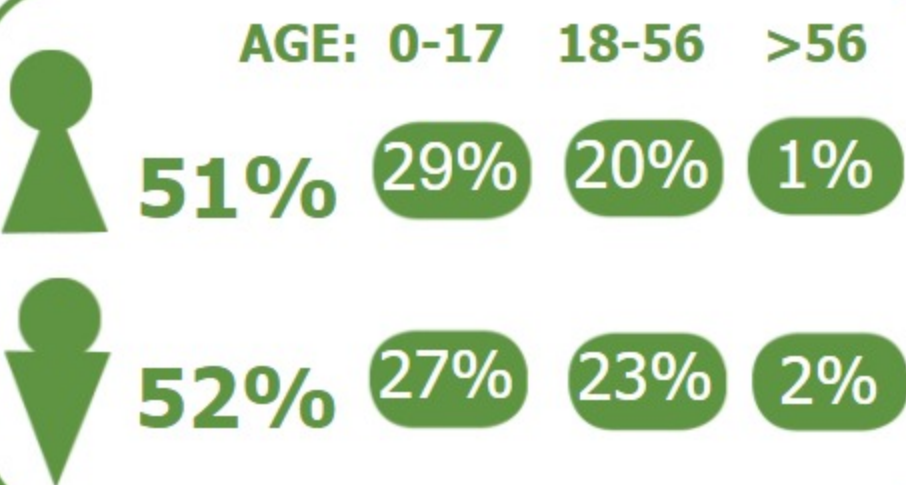


DEMOGRAPHICS

Population (2017):
327
Main ethnic group:
Kado
Other ethnic group:
None
Religion:
Animism



Ecosystem & Services:

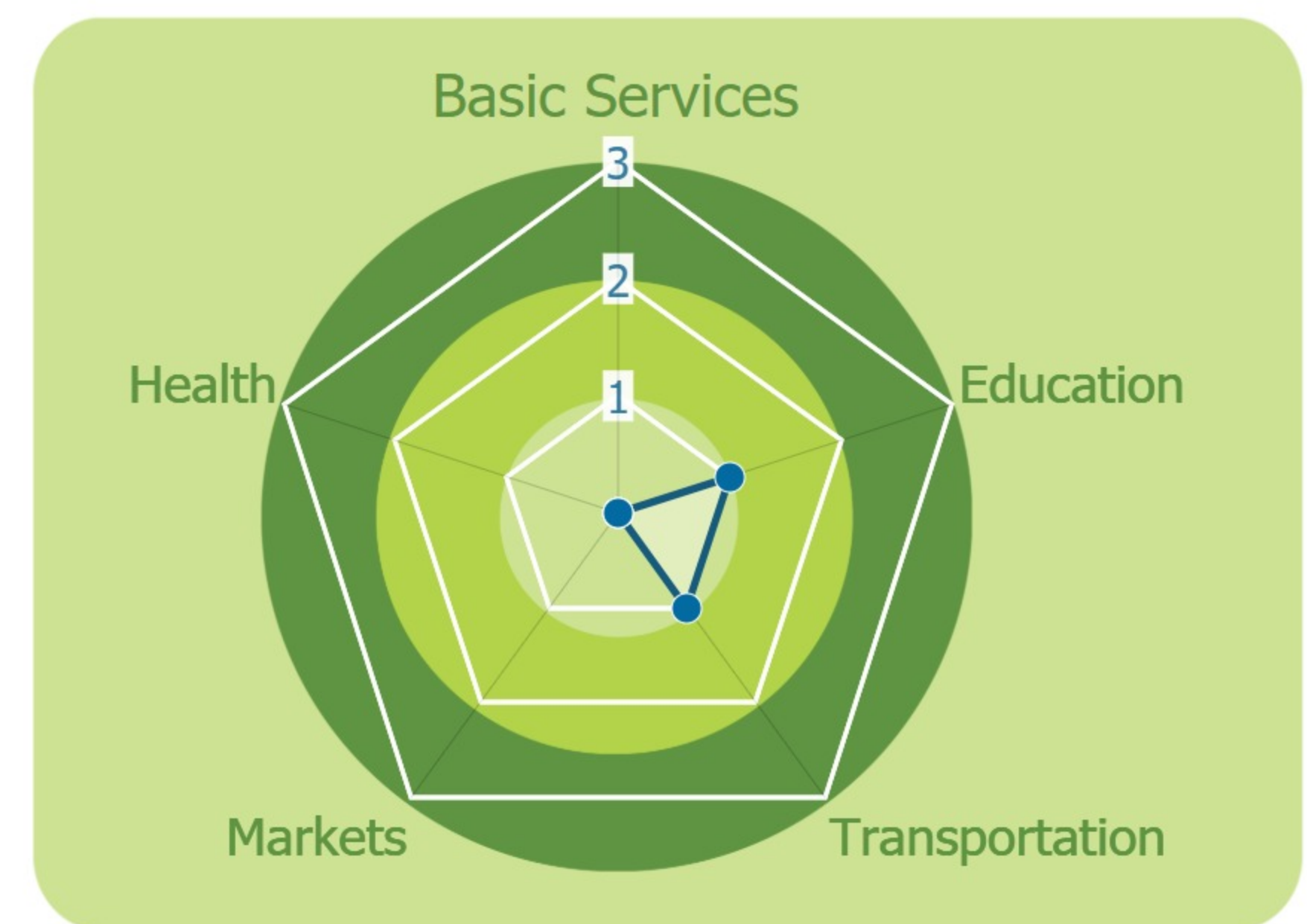
- **None**

Sources of Income:

- **Agriculture**

Education:

- **Primary**

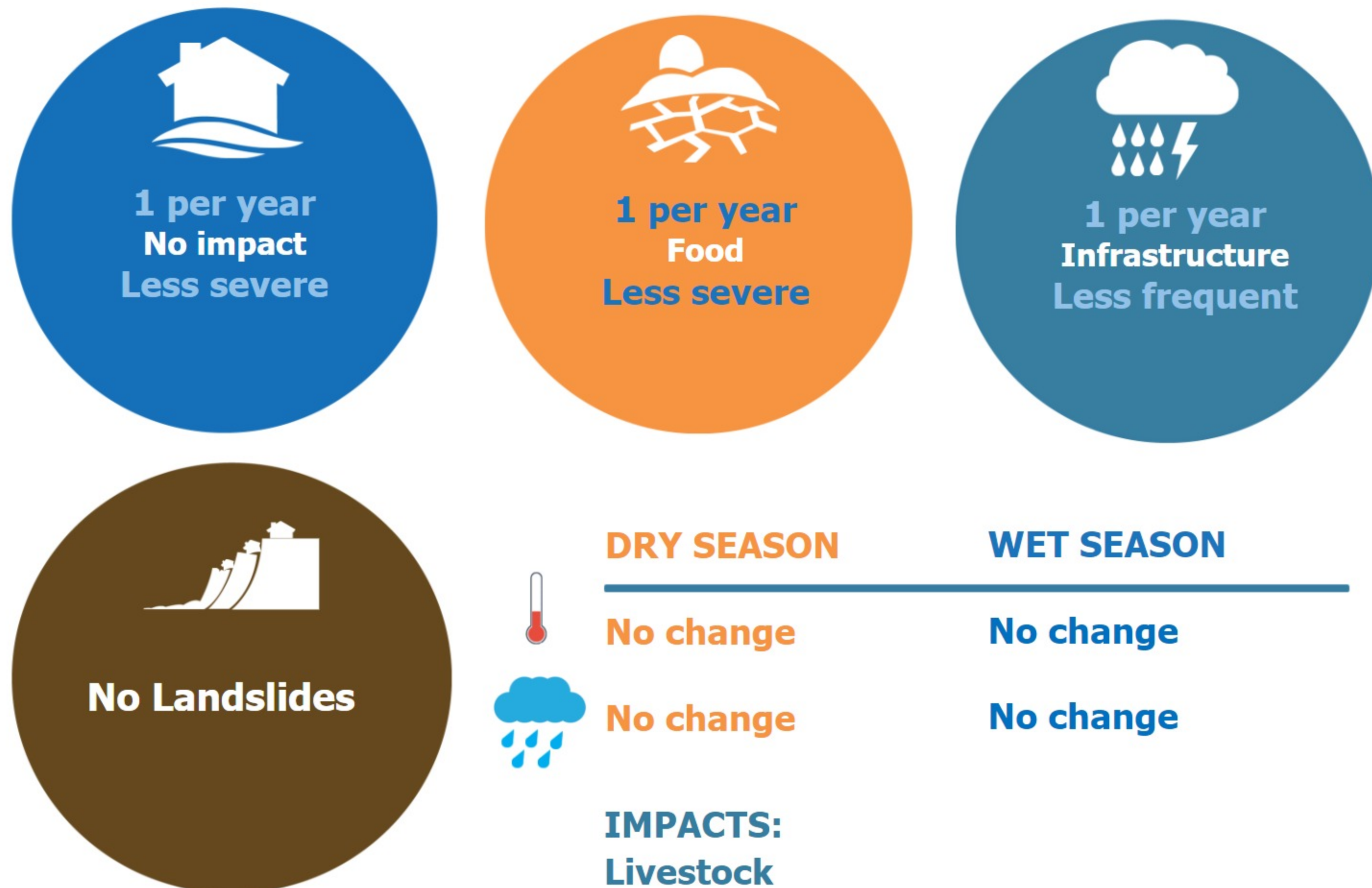


HEALTH

Water-bourne: **Diarrhea**
Skin
Vector-bourne: **None**

CLIMATE CHANGE & DISASTERS

Changes over the past 30 years



ENVIRONMENTAL ISSUES

Deforestation impacts

+ More agricultural land (+)
No negative impact

Hydropower impacts

No hydropower dam

Mining impacts

No mining activity

VULNERABILITY INDEX

Hazard Intensity: 0.53

Sensitivity: 4.2

Ranking: 2.24

PRIORITIES & NEEDS

1. Construct water facility (borehole)
2. Build latrine (Health)