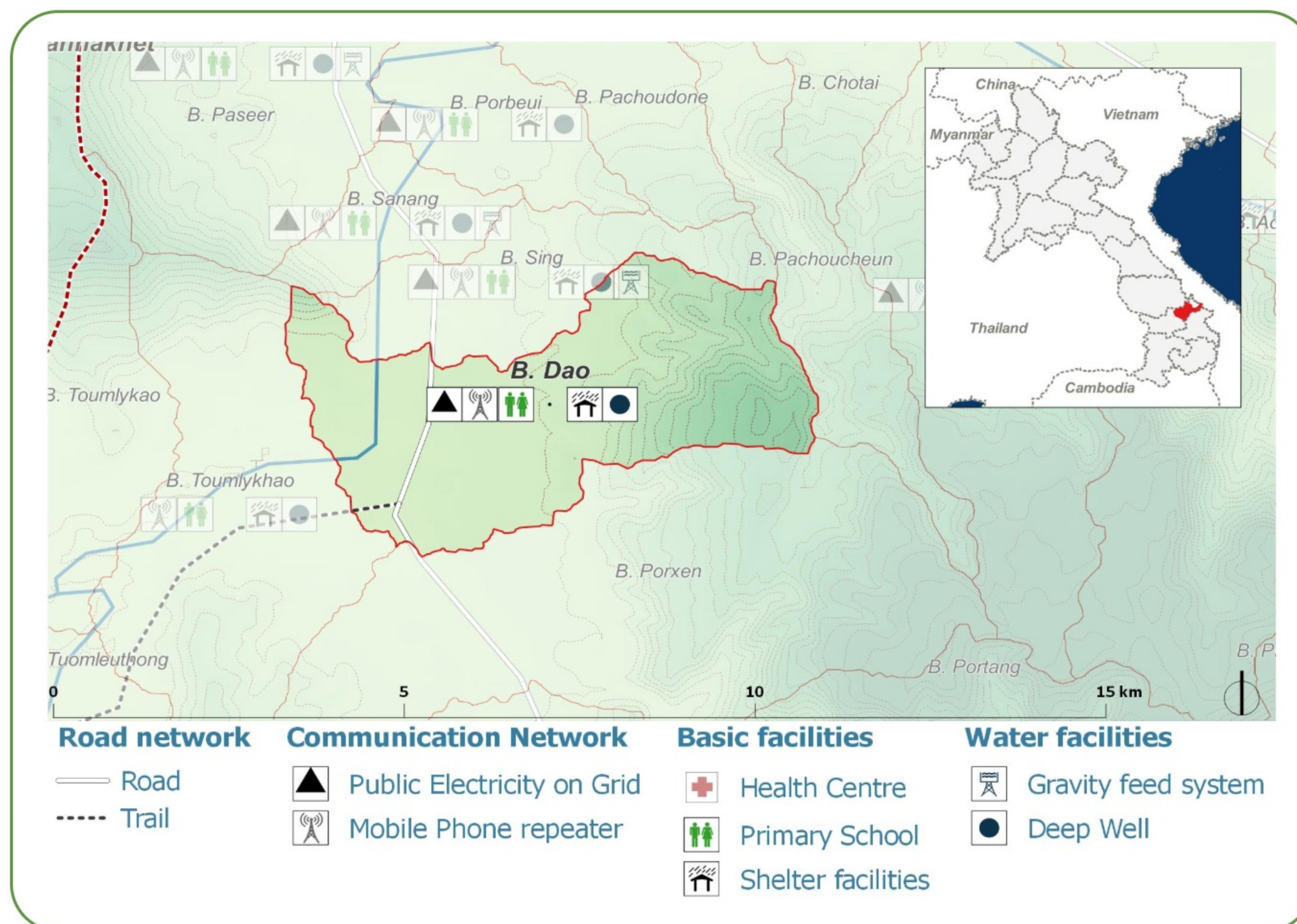
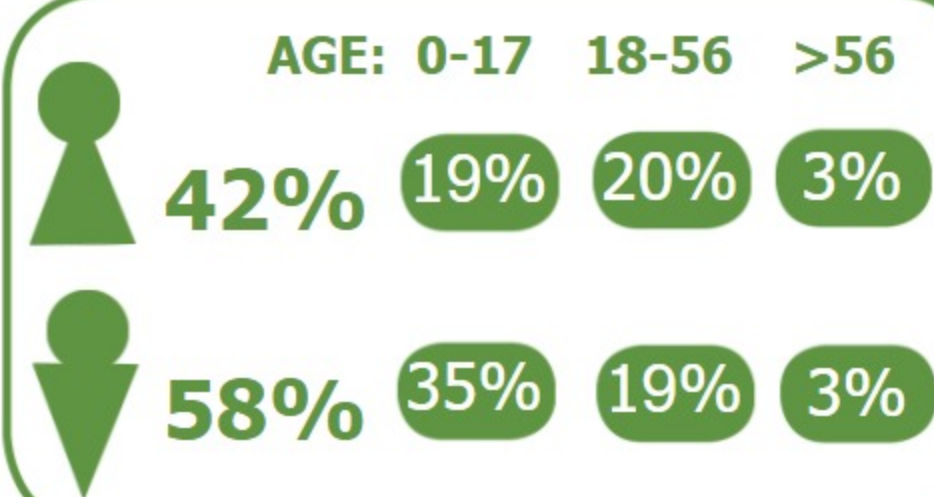


**DEMOGRAPHICS**

Population (2017):  
**384**  
Main ethnic group:  
**Katang**  
Other ethnic group:  
**Bakoe, Lao**  
Religion:  
**Animism**



**Ecosystem & Services:**

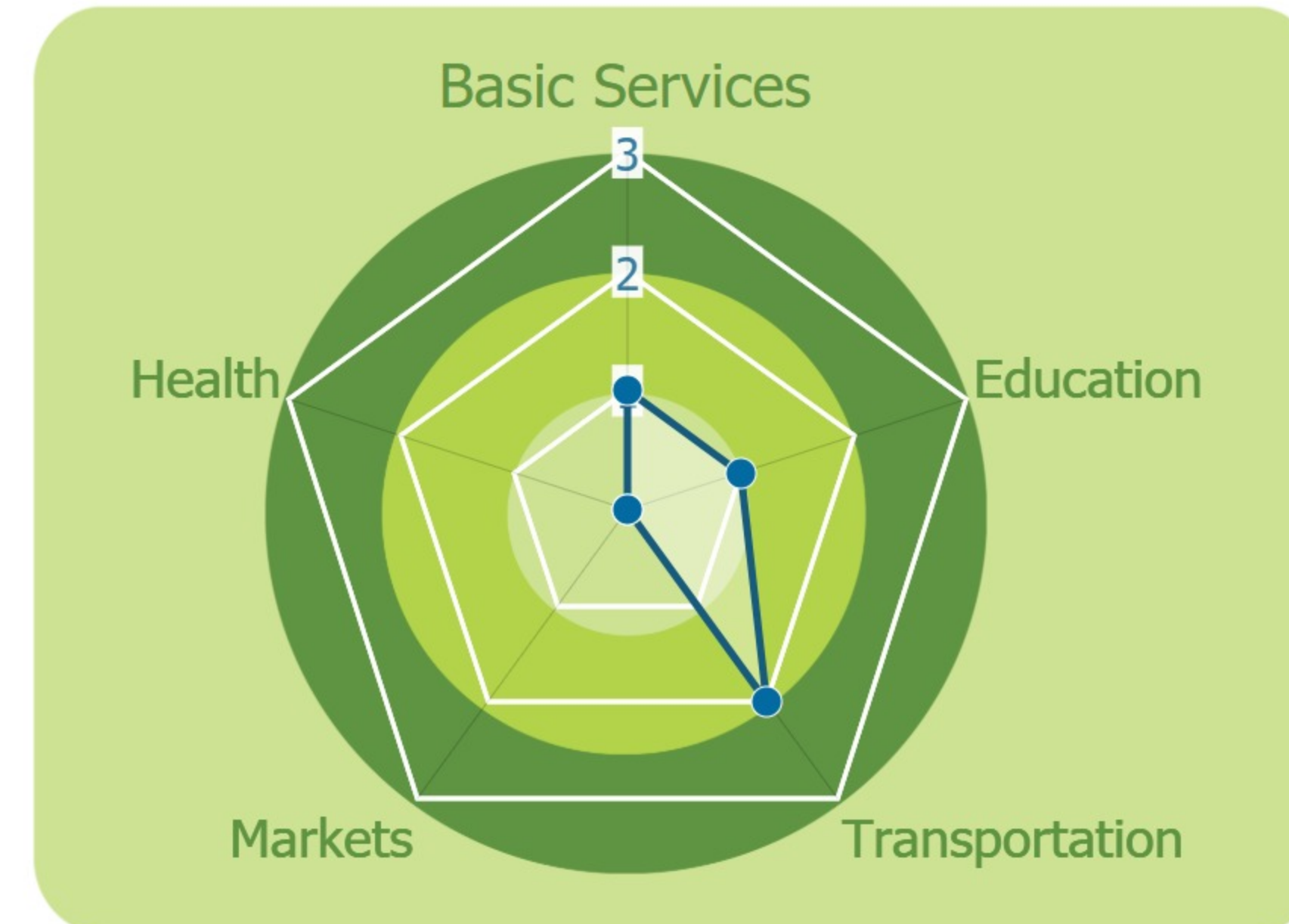
- Rice
- Maize
- Livestock
- Vegetables
- River

**Sources of Income:**

- Subsistence agriculture
- Livestock

**Education:**

- Primary

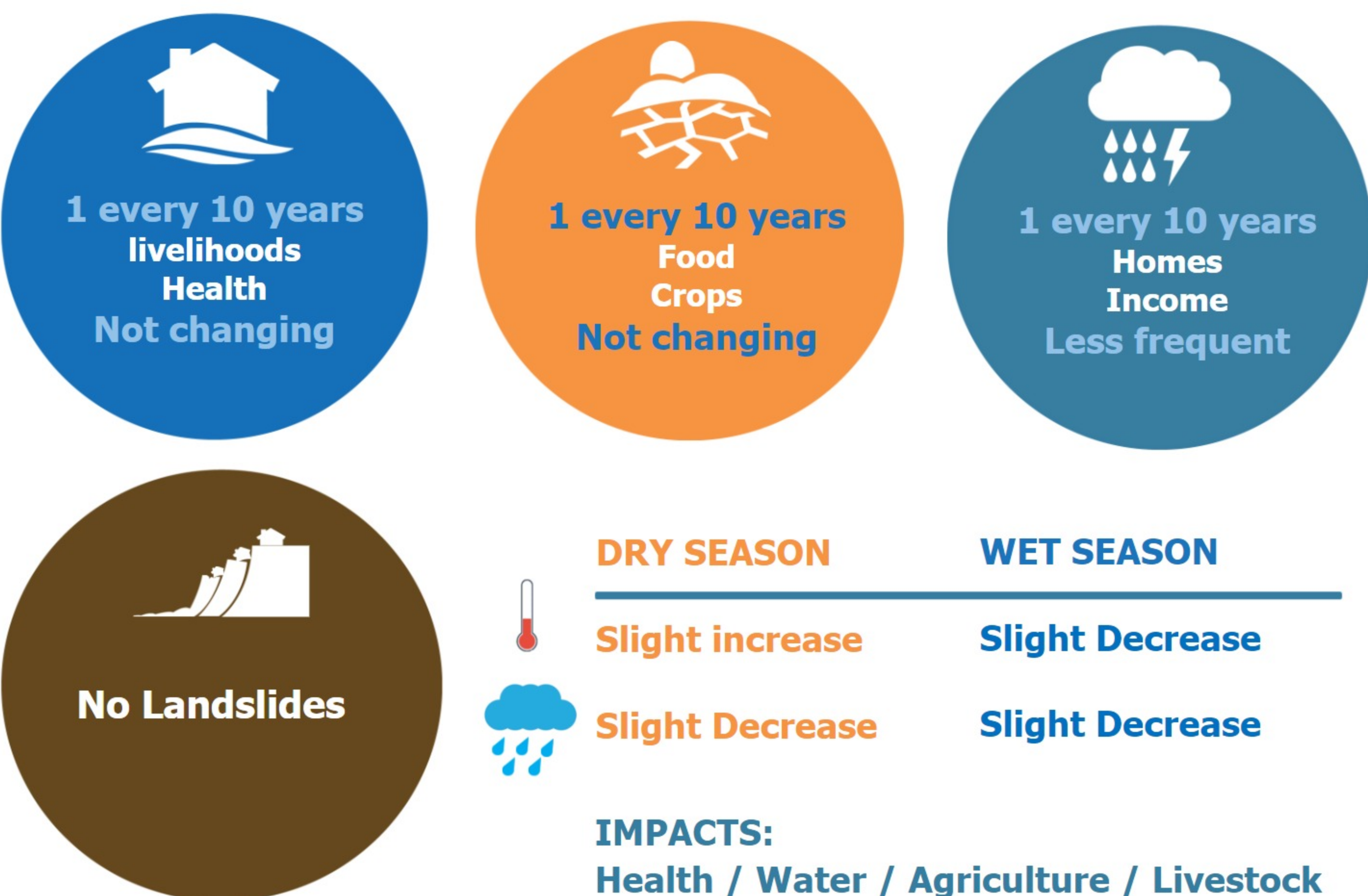


**HEALTH**

- Water-bourne:**  
Allergies  
Diarrhea  
Eye  
Skin
- Vector-bourne:**  
Dengue  
Encephalitis  
Malaria

**CLIMATE CHANGE & DISASTERS**

Changes over the past 30 years



**ENVIRONMENTAL ISSUES**

- Deforestation impacts**
  - + Industrial develop (+)
  - + More agricultural land (+)
  - Loss of biodiversity (-)
  - Less food sources (-)
- Hydropower impacts**
  - No hydropower dam
- Mining impacts**
  - No mining activity

**VULNERABILITY INDEX**

**Hazard Intensity: 0.87**  
**Sensitivity: 3.5**  
**Ranking: 3.03**

**PRIORITIES & NEEDS**

1. Construct pipe distribution system
2. Build latrine (Sanitation)
3. Construct water reservoir