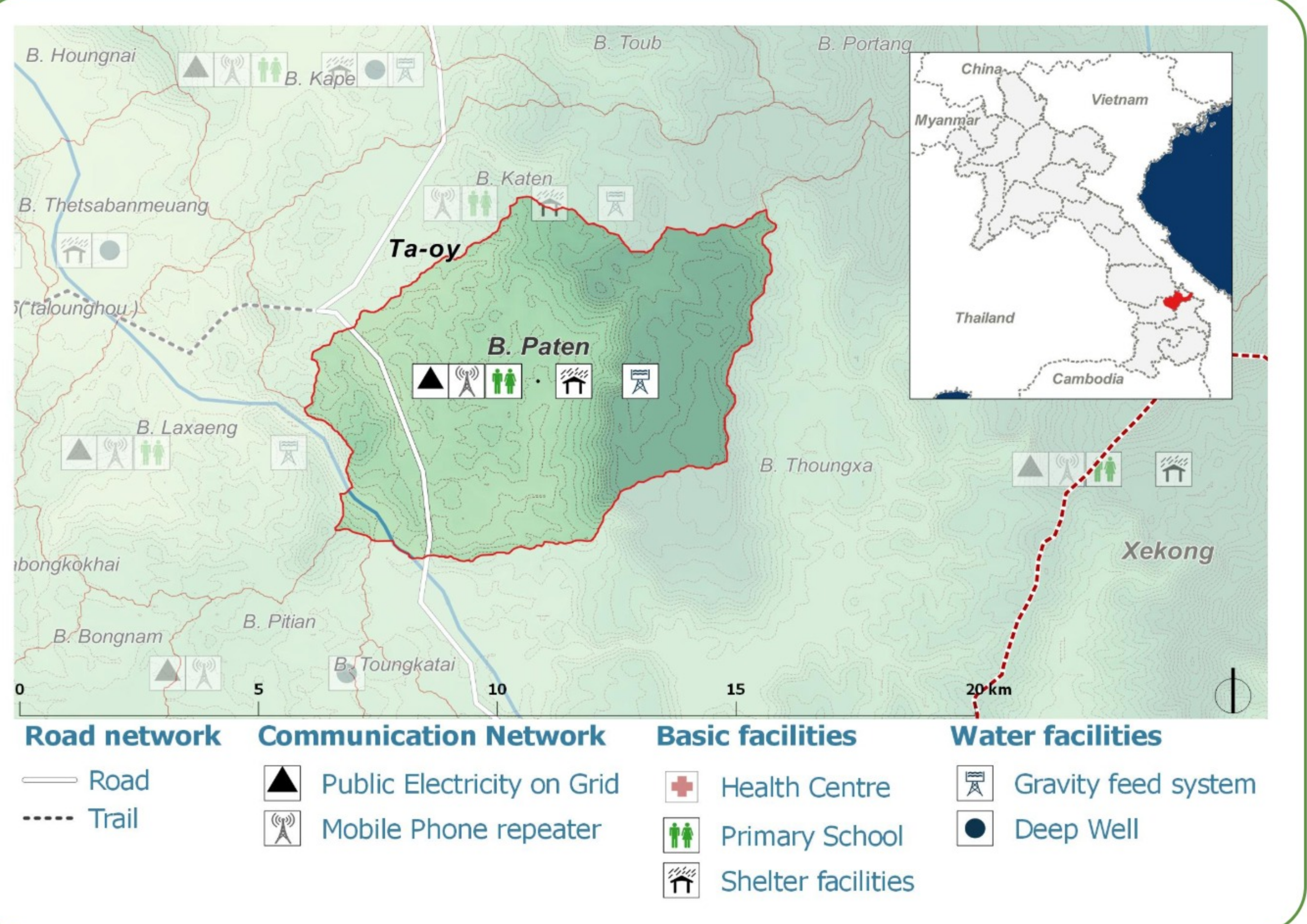
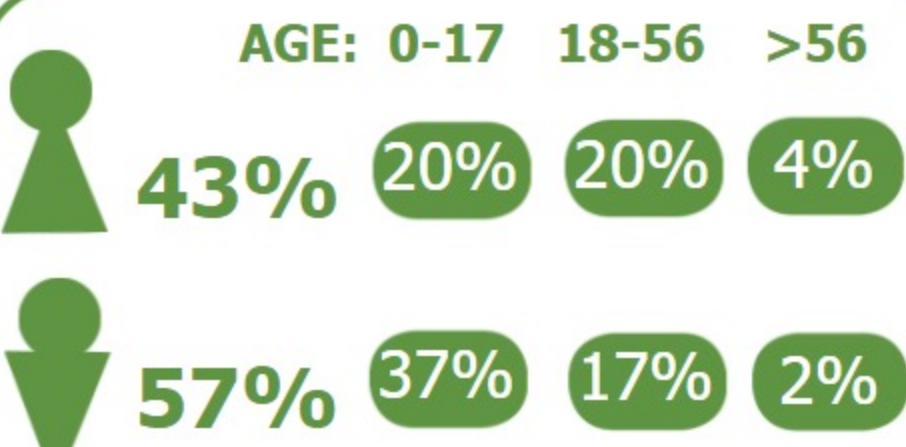


DEMOGRAPHICS

Population (2017):
477
Main ethnic group:
Ta Oy
Other ethnic group:
None
Religion:
Animism



Ecosystem & Services:

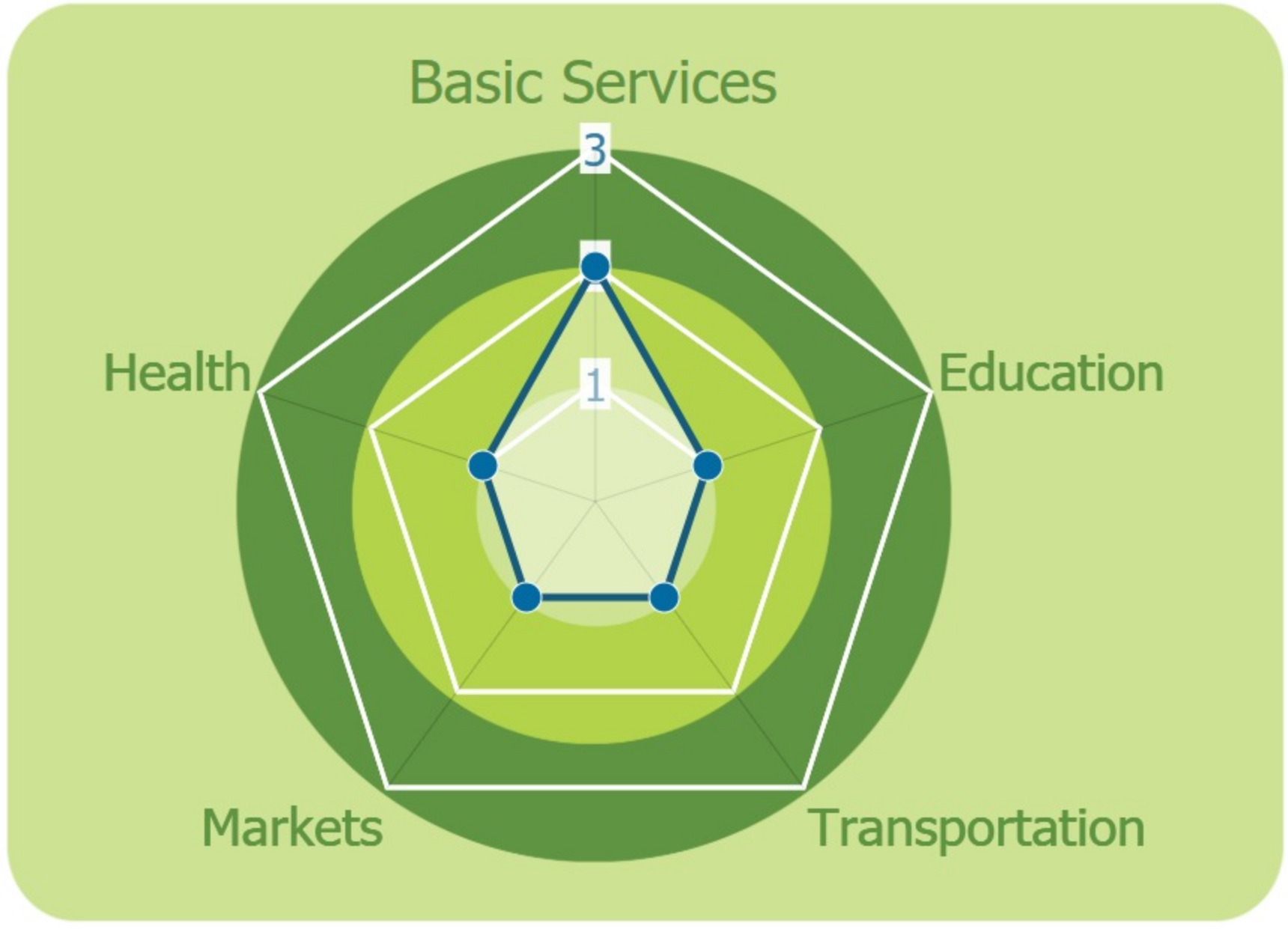
- Rice
- Maize
- Livestock
- Sugar cane
- Vegetables
- Stream
- River

Sources of Income:

- Subsistence agriculture
- Livestock

Education:

- Primary



HEALTH

- Water-bourne:**
Allergies
Diarrhea
Eye
Skin
- Vector-bourne:**
Dengue
Encephalitis
Malaria

CLIMATE CHANGE & DISASTERS

Changes over the past 30 years



DRY SEASON	WET SEASON
Slight increase	Slight increase
Some decrease	Slight Decrease

IMPACTS:
Health / Water / Agriculture / Livestock

ENVIRONMENTAL ISSUES

Deforestation impacts

+ Industrial develop (+)	- Loss of biodiversity (-)
+ More agricultural land (+)	- Landslides
	- Erosion (-)
	- Less food sources (-)

Hydropower impacts

No hydropower dam

Mining impacts

No mining activity

VULNERABILITY INDEX

Hazard Intensity: 2.13

Sensitivity: 3.23

Ranking: 6.9

PRIORITIES & NEEDS

1. Repair road
2. Pipe under road
3. Construct pipe distribution system