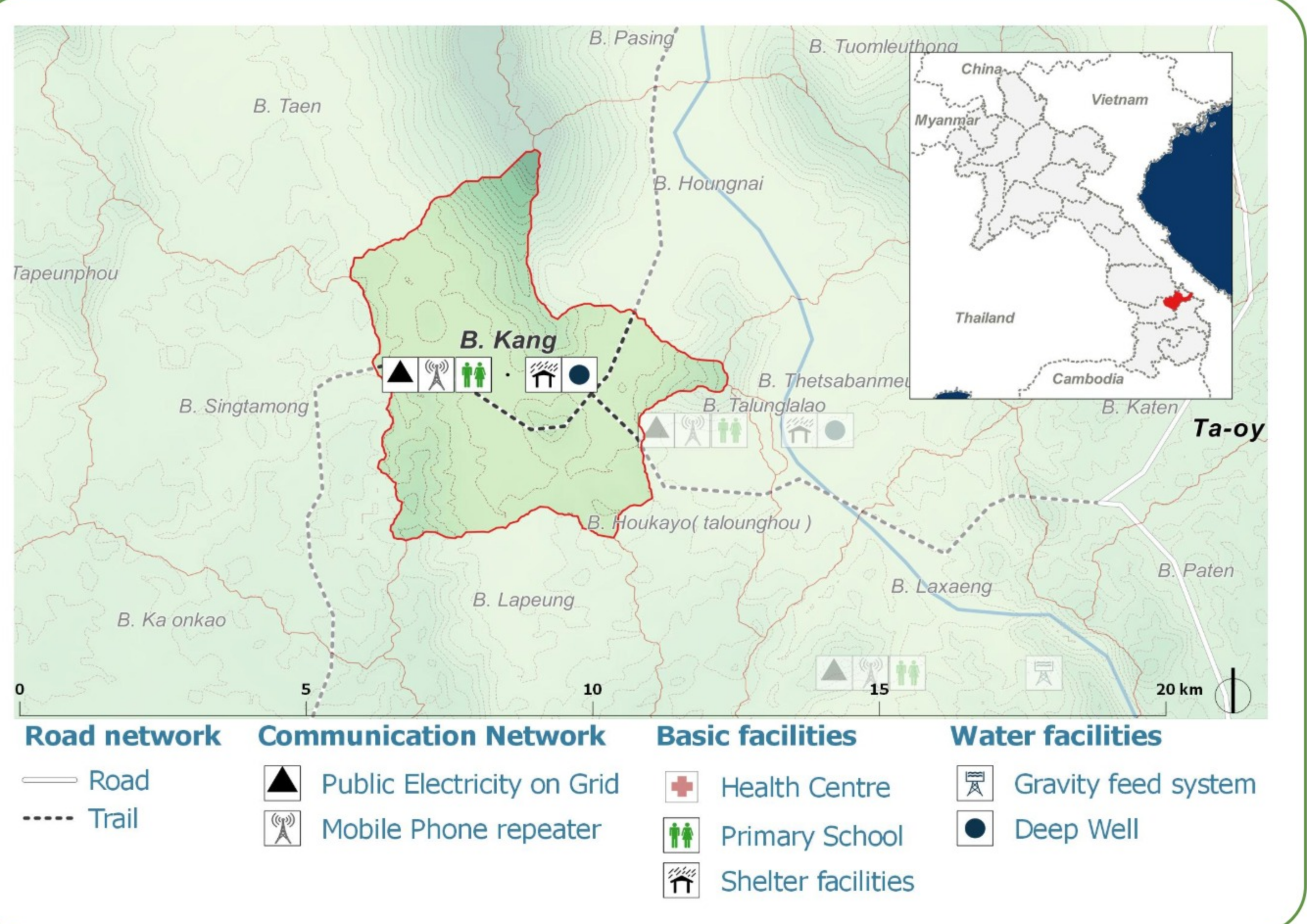
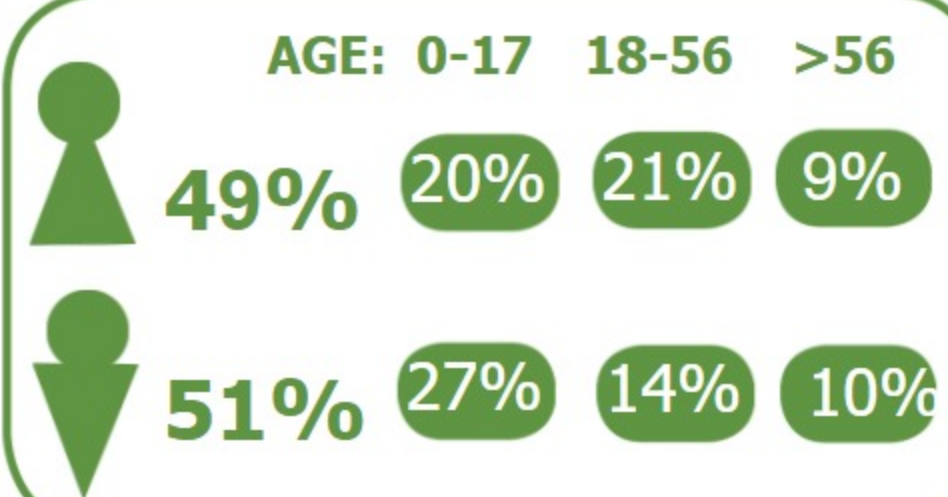


DEMOGRAPHICS

Population (2017): **578**
Main ethnic group: **Katang**
Other ethnic group: **Ta Oy, Lao**
Religion: **Animism**



Ecosystem & Services:

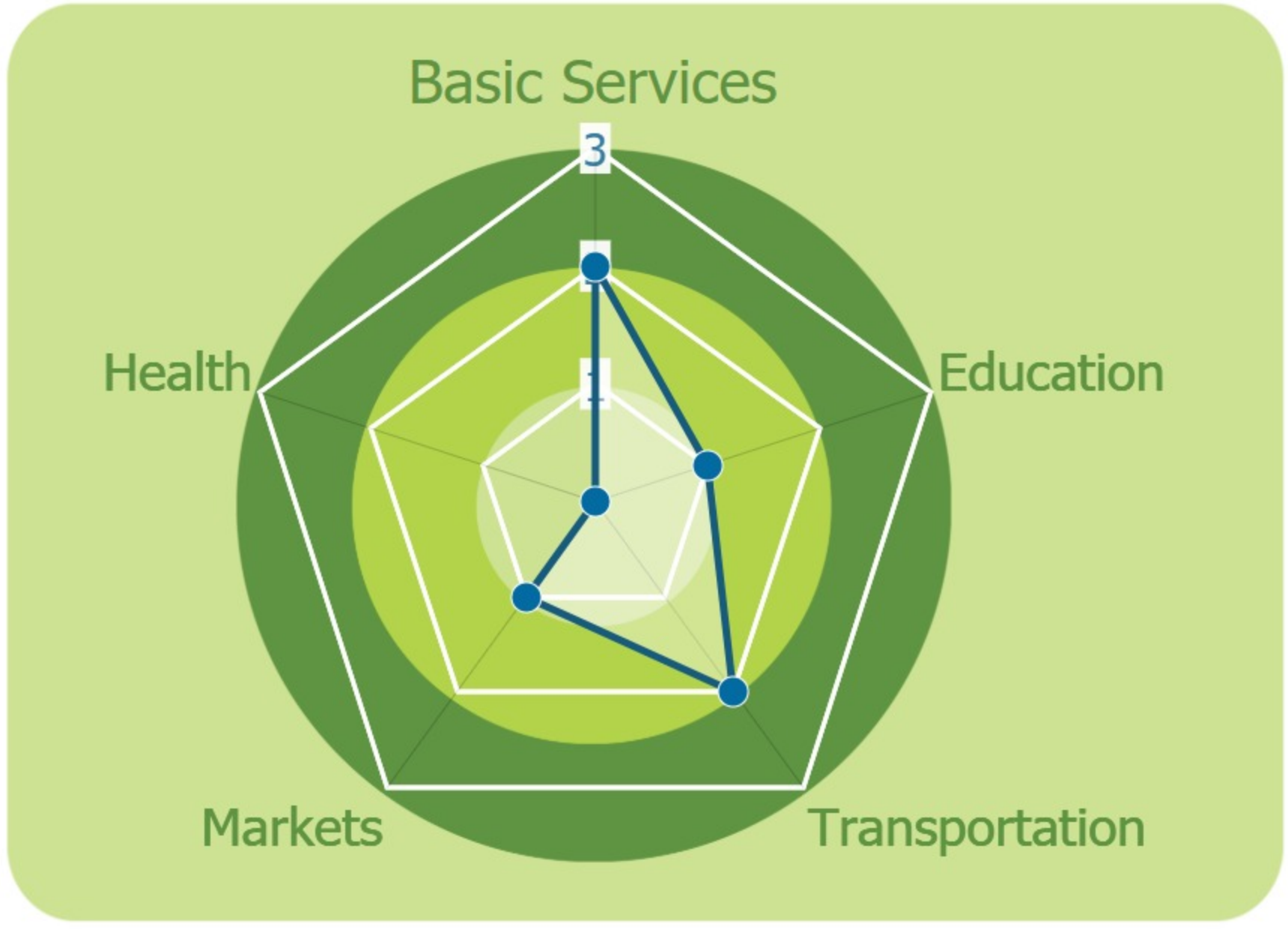
- Rice
- Maize
- Vegetables
- Wood

Sources of Income:

- Subsistence agriculture
- Livestock

Education:

- Primary



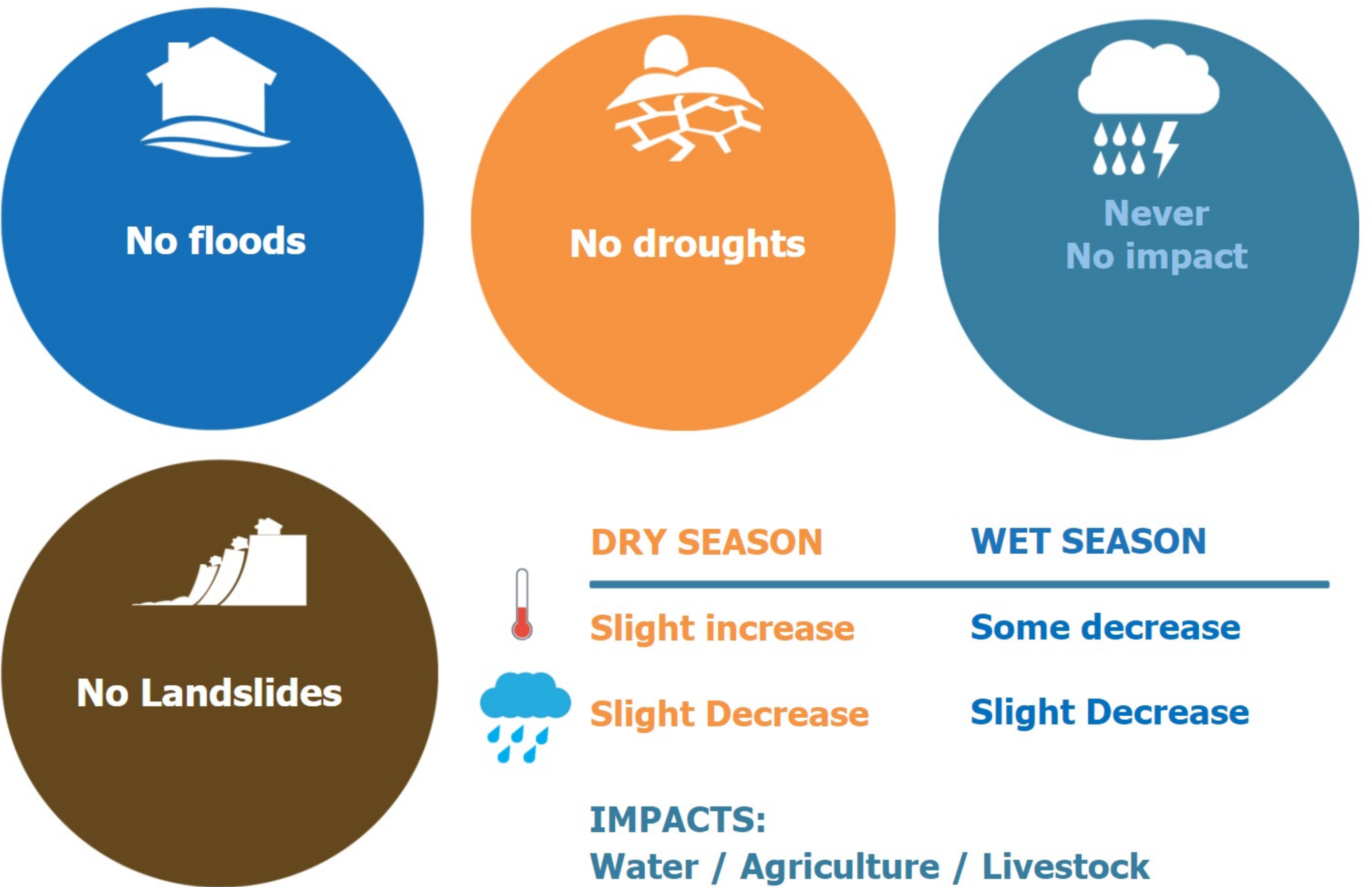
HEALTH

Water-bourne:
Allergies
Diarrhea

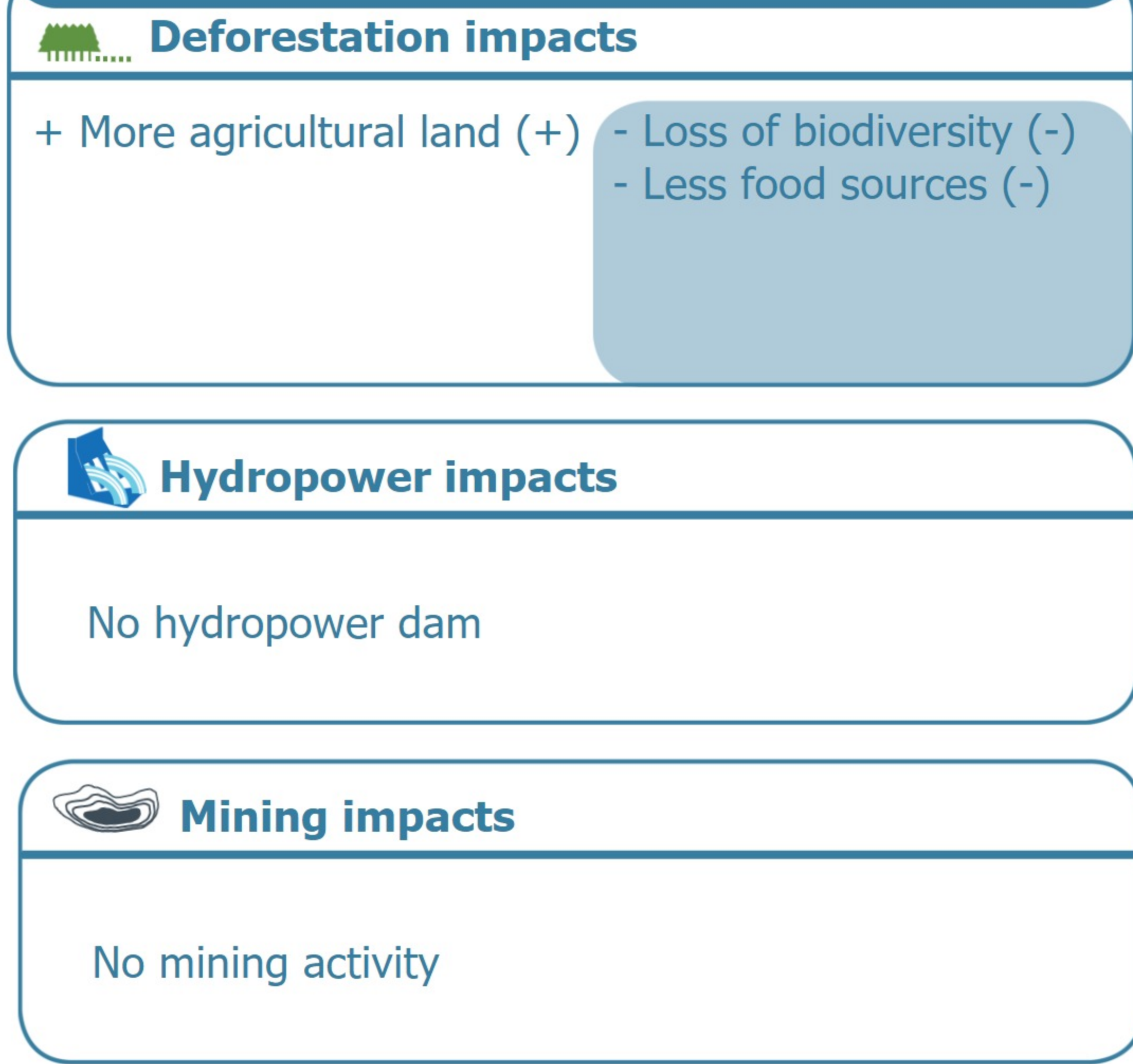
Vector-bourne:
Dengue
Encephalitis
Malaria

CLIMATE CHANGE & DISASTERS

Changes over the past 30 years



ENVIRONMENTAL ISSUES



VULNERABILITY INDEX

Hazard Intensity: 0.6

Sensitivity: 3.53

Ranking: 2.12

PRIORITIES & NEEDS

1. Increase agricultural production (expand production area)
2. Construct pipe distribution system
3. Build latrine (Sanitation)

