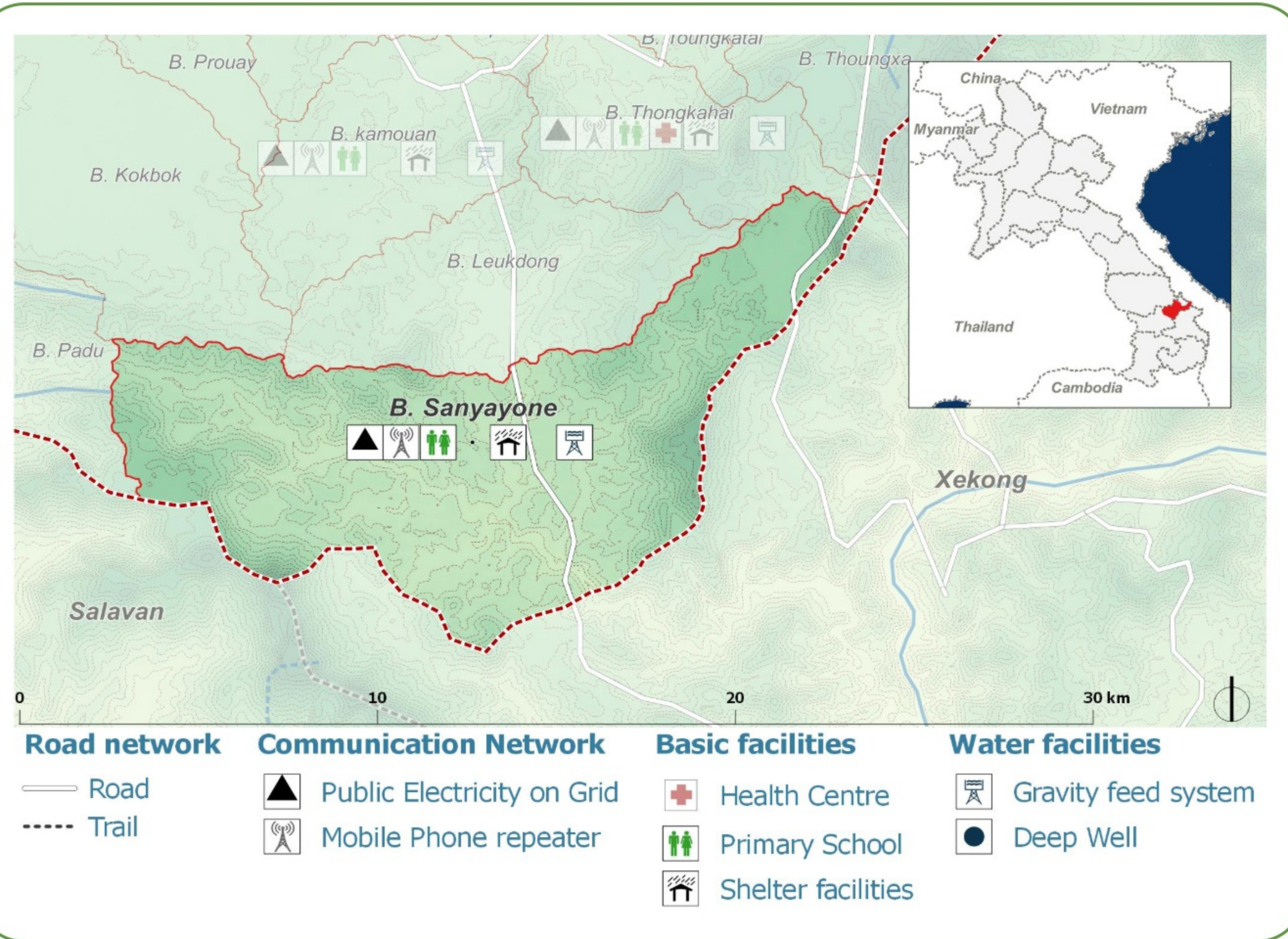
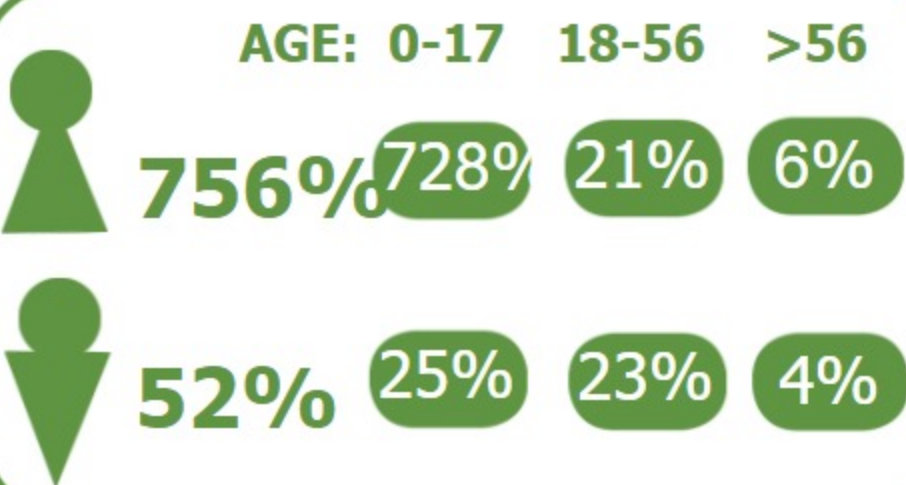


B. Sanyayone (1402027) Ta oi District, Saravane

DEMOGRAPHICS

Population (2017):
113
Main ethnic group:
Ta Oy
Other ethnic group:
**Ngkriang (Ngè'),
Katang**
Religion:
Animism



Ecosystem & Services:

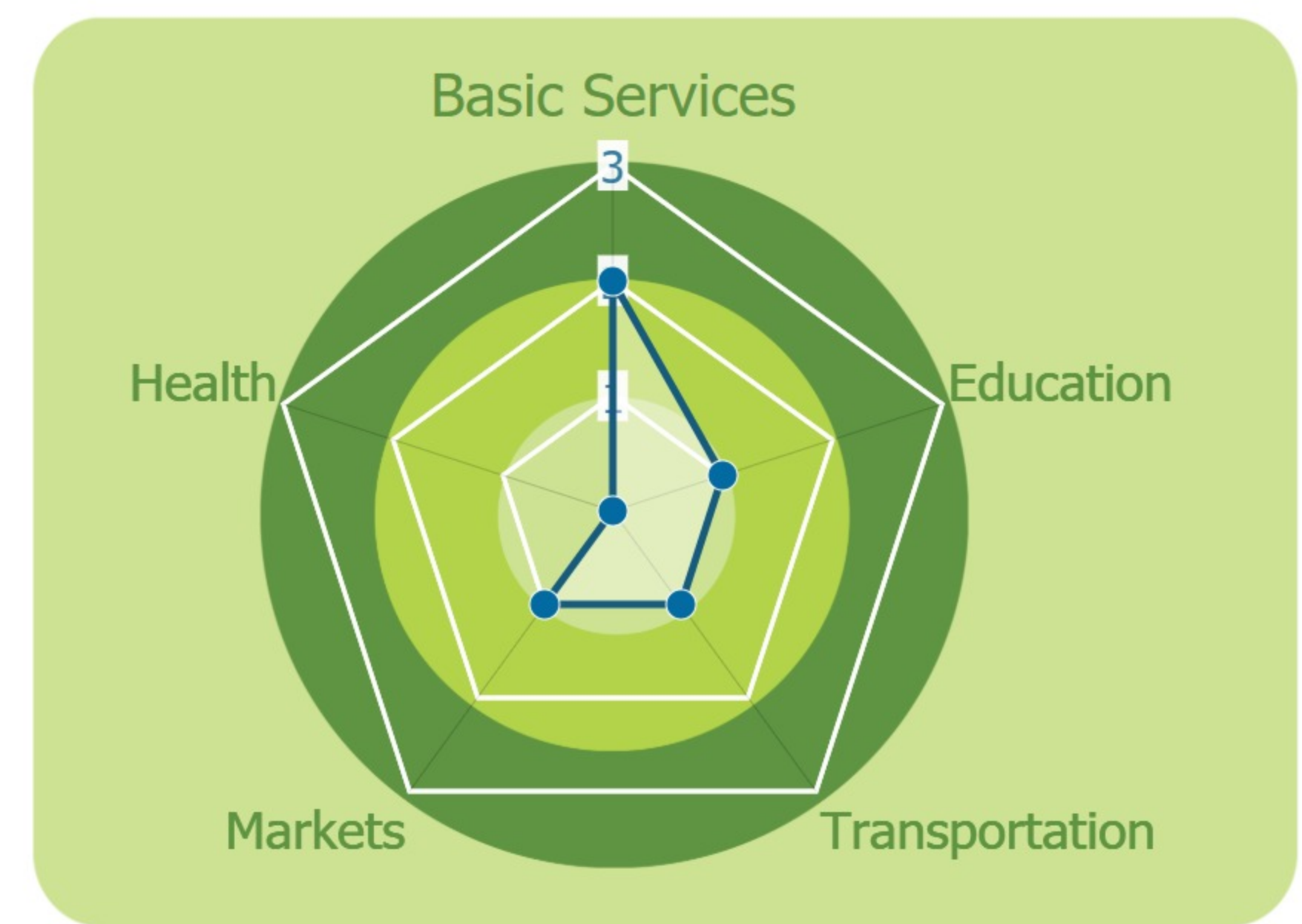
- Rice
- Maize
- Livestock
- Sugar cane
- Grass
- Vegetables

Sources of Income:

- Subsistence agriculture
- Livestock

Education:

- Primary

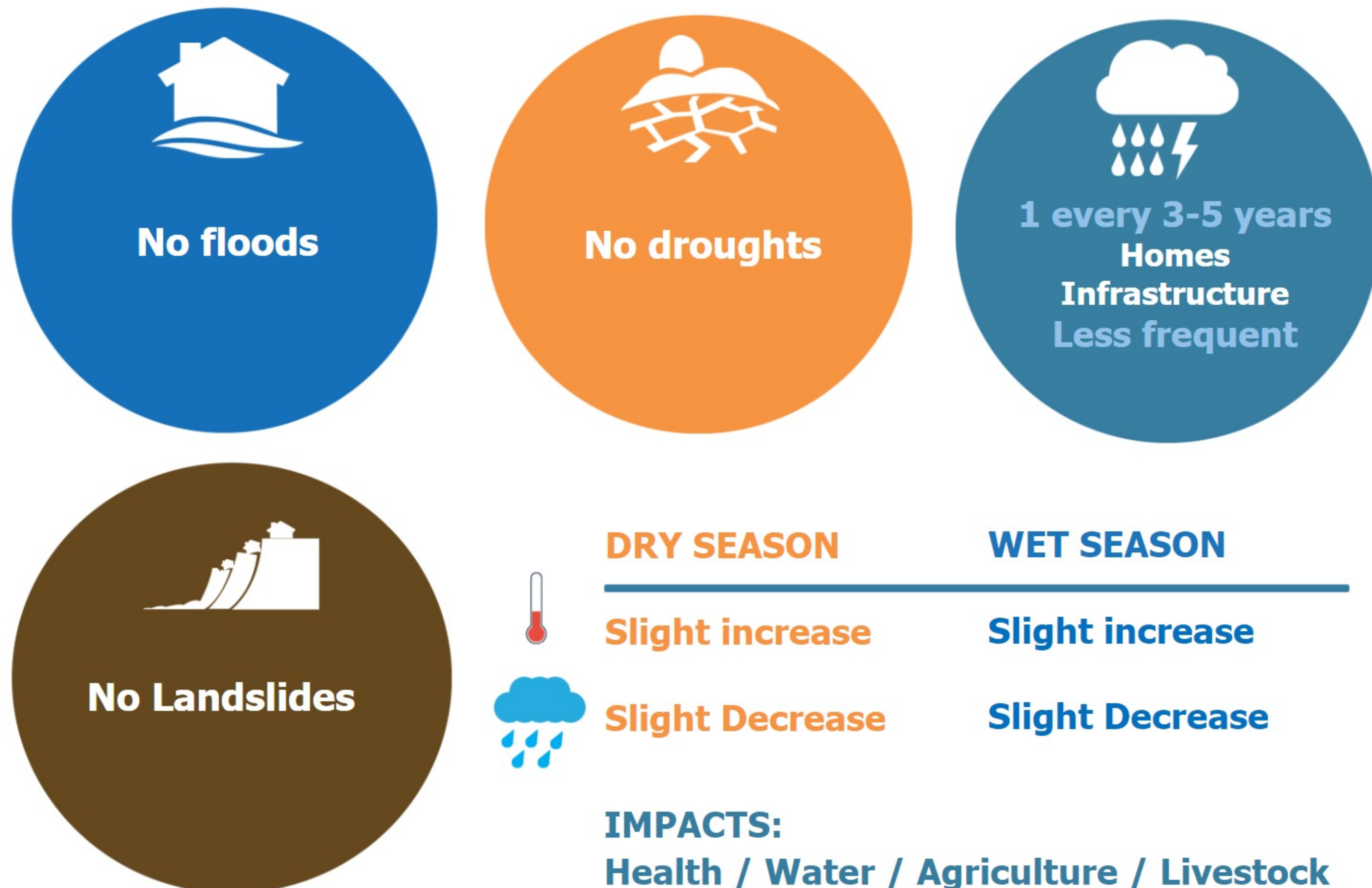


HEALTH

Water-bourne: Allergies, Eye, Skin
Vector-bourne: Dengue, Encephalitis

CLIMATE CHANGE & DISASTERS

Changes over the past 30 years



ENVIRONMENTAL ISSUES

Deforestation impacts

- + Industrial develop (+)
- + More agricultural land (+)
- Loss of biodiversity (-)
- Less food sources (-)

Hydropower impacts

No hydropower dam

Mining impacts

No mining activity

VULNERABILITY INDEX

Hazard Intensity: 0.8

Sensitivity: 3.6

Ranking: 2.88

PRIORITIES & NEEDS

1. Increase agricultural production (expand production area)
2. Diversify livelihoods
3. Increase agricultural production (expand production area)

