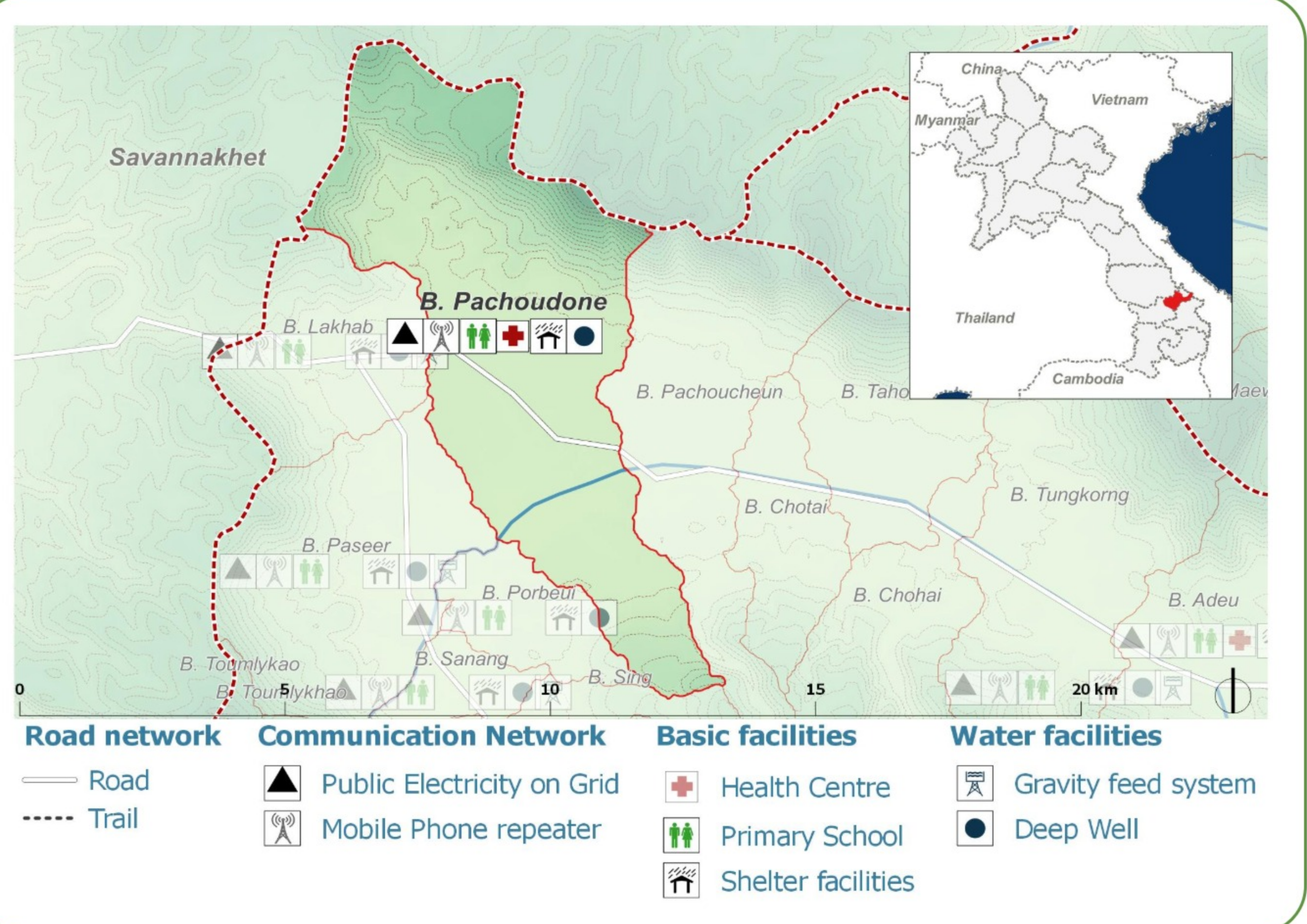
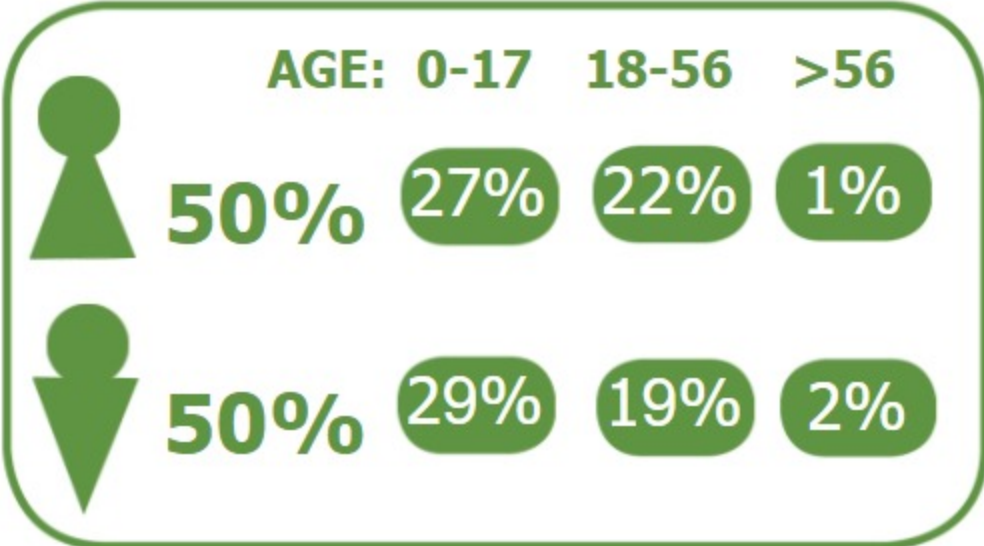


DEMOGRAPHICS

Population (2017): **828**
Main ethnic group: **Bakoe**
Other ethnic group: **Katang, Lao**
Religion: **Animism**



Ecosystem & Services:

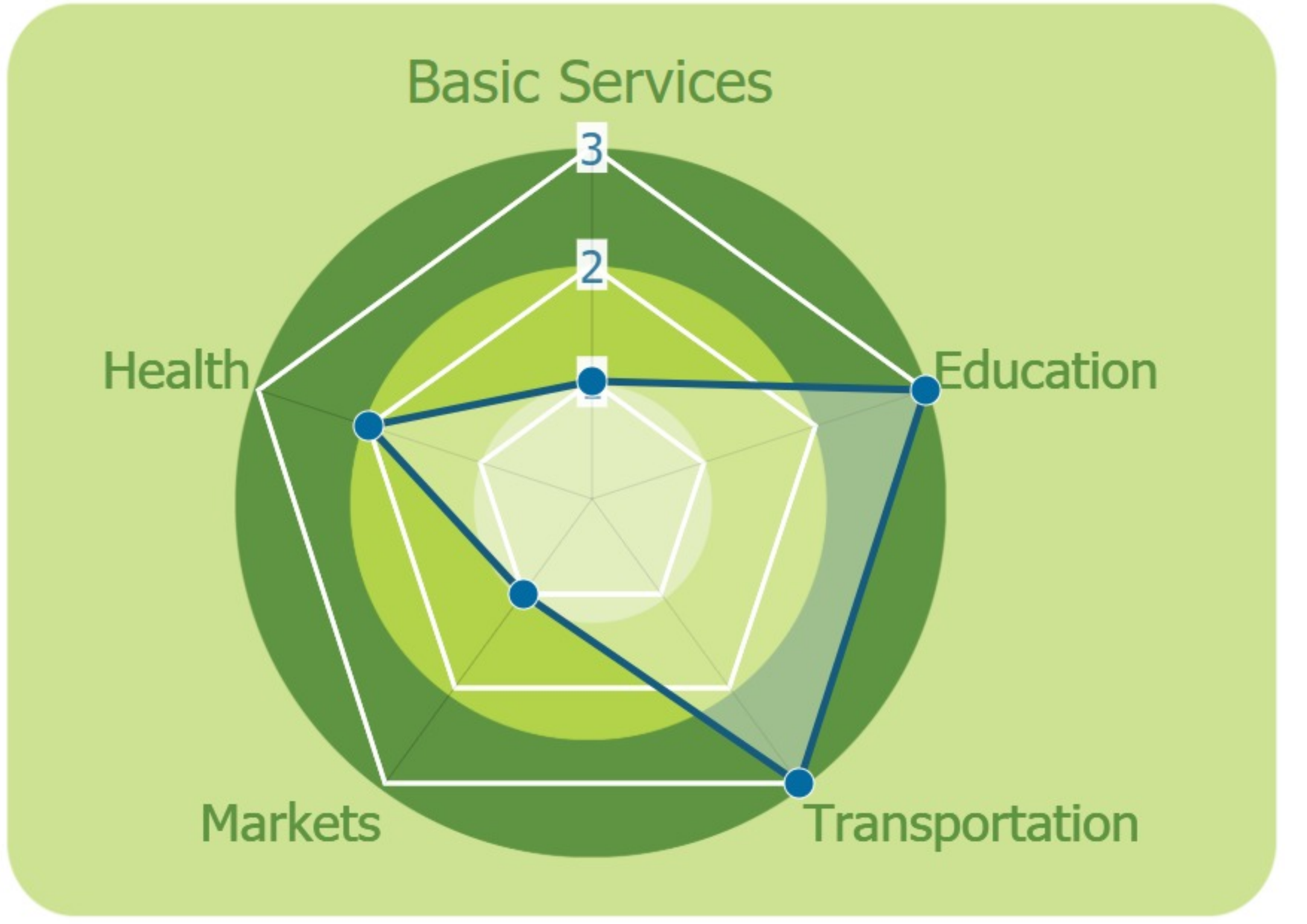
- Rice
- Maize
- Livestock
- Grass
- Vegetables
- River

Sources of Income:

- Agriculture
- Subsistence agriculture
- Livestock

Education:

- Kindergarten
- Primary
- High school



HEALTH

Water-bourne:
Allergies
Eye
Skin

Vector-bourne:
Dengue
Encephalitis
Malaria

CLIMATE CHANGE & DISASTERS

Changes over the past 30 years

No floods

No droughts

Never No impact

No Landslides

	DRY SEASON	WET SEASON
Temperature	Slight increase	Slight increase
Precipitation	Slight Decrease	Slight Decrease

IMPACTS:
Health / Water / Agriculture / Livestock

ENVIRONMENTAL ISSUES

Deforestation impacts

- + More agricultural land (+)
- Loss of biodiversity (-)
- Less food sources (-)

Hydropower impacts

No hydropower dam

Mining impacts

No mining activity

VULNERABILITY INDEX

Hazard Intensity: 1.8

Sensitivity: 2.1

Ranking: 3.78

PRIORITIES & NEEDS

1. Increase agricultural production (expand production area)
2. Construct water facility (borehole)
3. Repair pipe/distribution

